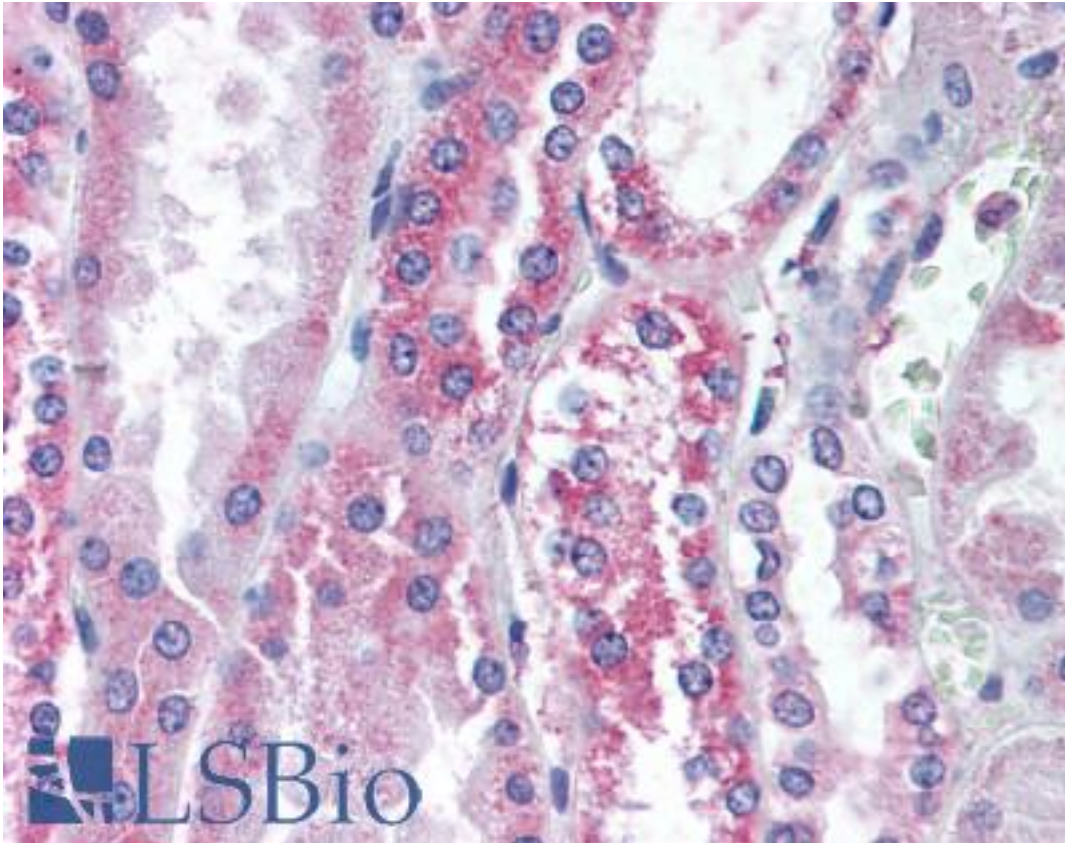


VR1 / TRPV1 Rabbit anti-Human Polyclonal (Internal) Antibody - LS-A9670 - LSBio

CatalogID:	LS-A9670
Target:	transient receptor potential cation channel, subfamily V, member 1 (TRPV1)
Synonyms:	TRPV1 Antibody, Capsaicin receptor Antibody, OTRPC1 Antibody, Vanilloid receptor subtype 1 Antibody, Osm-9-like TRP channel 1 Antibody, Vanilloid receptor 1 Antibody, VR1 Antibody
Family / Subfamily:	Ion Channel / Calcium channel - TRP
Host	TRPV1 antibody was produced in Rabbit
Clonality:	Polyclonal
Immunogen Species:	VR1 / TRPV1 antibody was raised against Human
Antigen Type:	Synthetic peptide
Immunogen:	VR1 / TRPV1 antibody was raised against synthetic 17 amino acid peptide from internal region of human TRPV1. Percent identity with other species by BLAST analysis: Human, Gorilla, Gibbon, Guinea pig (100%); Monkey (94%); Horse (82%).
Specificity:	Human TRPV1. BLAST analysis of the peptide immunogen showed no homology with other human proteins.
Epitope:	Internal
Reactivity:	Human, Gorilla, Gibbon, Guinea pig
Predicted Reactivity:	Monkey
Purification:	Immunoaffinity purified
Presentation:	PBS, 0.1% sodium azide.
Recommended Storage:	Long term: -70°C; Short term: +4°C
Uses:	IHC - Paraffin (5 µg/ml) (Optimal dilution to be determined by the researcher)
Size:	50 µg
Concentration:	1 mg/ml

Immunohistochemistry Image:



Anti-TRPV1 antibody LS-A9670 IHC of human kidney. Immunohistochemistry of formalin-fixed, paraffin-embedded tissue after heat-induced antigen retrieval.

Requested From:

Japan

Laboratory Reagent For In Vitro Research Use Only

Not for resale without prior written consent from LifeSpan BioSciences, Inc.

Created on 9/23/2014

© 2014 LifeSpan BioSciences