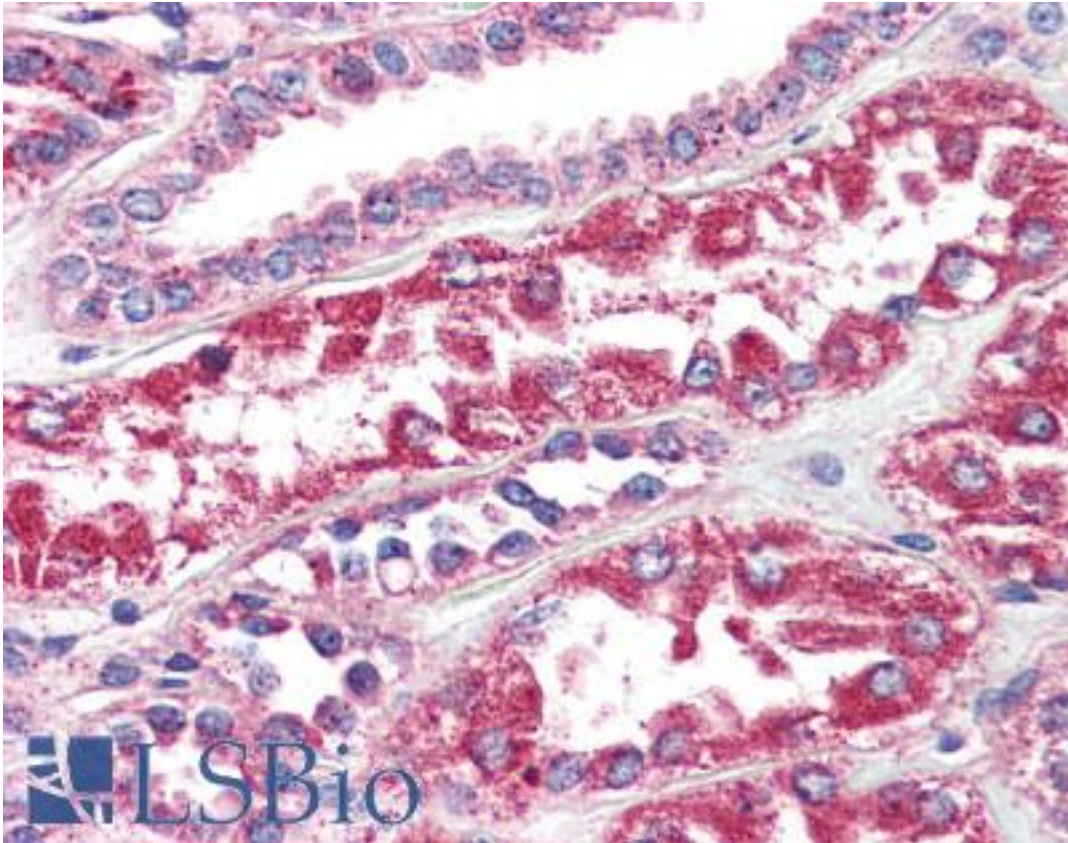


PTGER2 / EP2 Rabbit anti-Human Polyclonal (Internal) Antibody - LS-A967 - LSBio

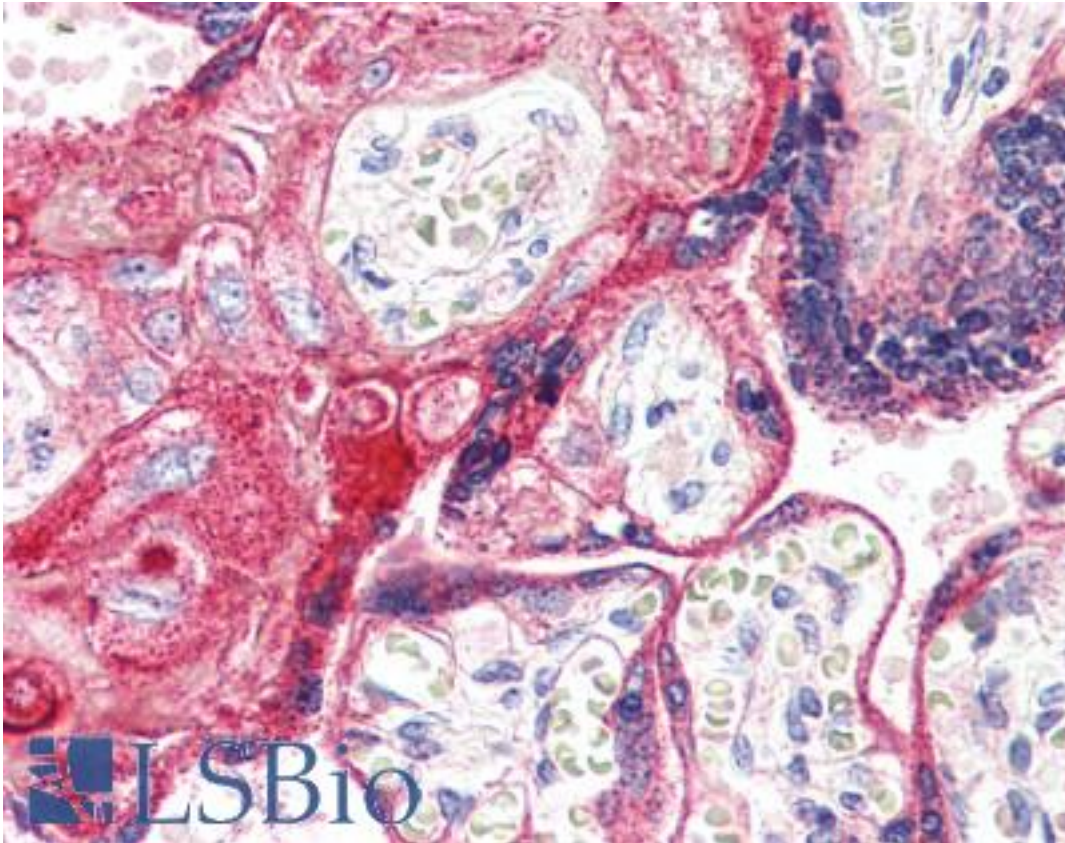
CatalogID:	LS-A967
Target:	prostaglandin E receptor 2 (subtype EP2), 53kDa (PTGER2)
Synonyms:	PTGER2 Antibody, EP2 prostaglandin e2 receptor Antibody, EP2 prostaglandin receptor Antibody, EP2 Antibody, Pge2-r ep2 Antibody, PGE2 receptor EP2 subtype Antibody, Prostaglandin E receptor 2 Antibody, Prostanoid EP2 receptor Antibody, EP2 receptor Antibody, PGE receptor EP2 subtype Antibody
Family / Subfamily:	GPCR / Prostanoid
Host	PTGER2 antibody was produced in Rabbit
Clonality:	Polyclonal
Immunogen Species:	PTGER2 / EP2 antibody was raised against Human
Antigen Type:	Synthetic peptide
Immunogen:	PTGER2 / EP2 antibody was raised against synthetic 16 amino acid peptide from internal region of human EP2. Percent identity with other species by BLAST analysis: Human, Gorilla (100%); Monkey, Marmoset, Mouse, Rat, Hamster (94%); Bat, Dog, Pig (88%); Gibbon, Panda, Horse (81%).
Specificity:	Human EP2. BLAST analysis of the peptide immunogen showed no homology with other human proteins.
Epitope:	Internal
Reactivity:	Human, Gorilla
Predicted Reactivity:	Monkey, Mouse, Rat, Hamster
Purification:	Immunoaffinity purified
Presentation:	PBS, 0.1% sodium azide.
Recommended Storage:	Long term: -70°C; Short term: +4°C
Usage Summary:	Immunohistochemistry: LS-A967 was validated for use in immunohistochemistry on a panel of 21 formalin-fixed, paraffin-embedded (FFPE) human tissues after proteinase K antigen retrieval. After incubation with the primary antibody, slides were incubated with biotinylated secondary antibody, followed by alkaline phosphatase-streptavidin and chromogen. The stained slides were evaluated by a pathologist to confirm staining specificity. The optimal working concentration for LS-A967 was determined to be 10 ug/ml.
Uses:	IHC - Paraffin (10 µg/ml) (Optimal dilution to be determined by the researcher)
Size:	50 µg
Concentration:	1 mg/ml

Immunohistochemistry Image:



Anti-EP2 antibody LS-A967 IHC of human kidney. Immunohistochemistry of formalin-fixed, paraffin-embedded tissue after heat-induced antigen retrieval.

Immunohistochemistry Image:



Anti-EP2 antibody LS-A967 IHC of human placenta. Immunohistochemistry of formalin-fixed, paraffin-embedded tissue after heat-induced antigen retrieval.

Requested From:

Japan

Laboratory Reagent For In Vitro Research Use Only

Not for resale without prior written consent from LifeSpan BioSciences, Inc.

Created on 9/23/2014

© 2014 LifeSpan BioSciences