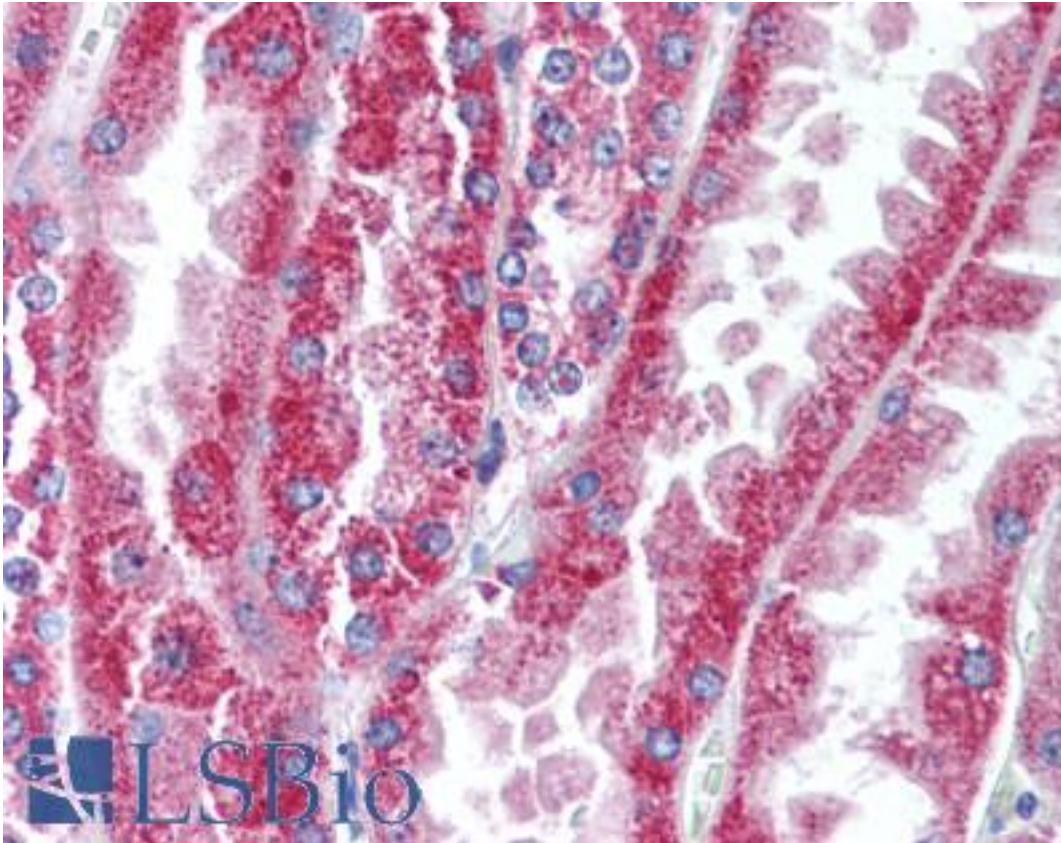


WNT16 Rabbit anti-Human Polyclonal (Internal) Antibody - LS-A9629 - LSBio	
CatalogID:	LS-A9629
Target:	wingless-type MMTV integration site family, member 16 (WNT16)
Synonyms:	WNT16 Antibody, Protein Wnt-16 Antibody
Family / Subfamily:	WNT / not assigned-WNT
Host	WNT16 antibody was produced in Rabbit
Clonality:	Polyclonal
Immunogen Species:	WNT16 antibody was raised against Human
Antigen Type:	Synthetic peptide
Immunogen:	WNT16 antibody was raised against synthetic 16 amino acid peptide from internal region of human WNT16. Percent identity with other species by BLAST analysis: Human, Mouse, Rat, Hamster (100%); Gorilla, Monkey, Marmoset (94%); Gibbon, Elephant, Panda, Dog, Horse, Turkey (88%); Bovine, Rabbit, Opossum, Platypus (81%).
Specificity:	Human WNT16. BLAST analysis of the peptide immunogen showed no homology with other human proteins, except CETN3 (50%).
Epitope:	Internal
Reactivity:	Human, Mouse, Rat, Hamster
Predicted Reactivity:	Gorilla, Monkey
Purification:	Immunoaffinity purified
Presentation:	PBS, 0.1% sodium azide.
Recommended Storage:	Long term: -70°C; Short term: +4°C
Uses:	IHC - Paraffin (10 µg/ml) (Optimal dilution to be determined by the researcher)
Size:	50 µg
Concentration:	1 mg/ml

Immunohistochemistry Image:



Anti-WNT16 antibody LS-A9629 IHC of human kidney. Immunohistochemistry of formalin-fixed, paraffin-embedded tissue after heat-induced antigen retrieval.

Requested From:

Japan

Laboratory Reagent For In Vitro Research Use Only

Not for resale without prior written consent from LifeSpan BioSciences, Inc.

Created on 9/23/2014

© 2014 LifeSpan BioSciences