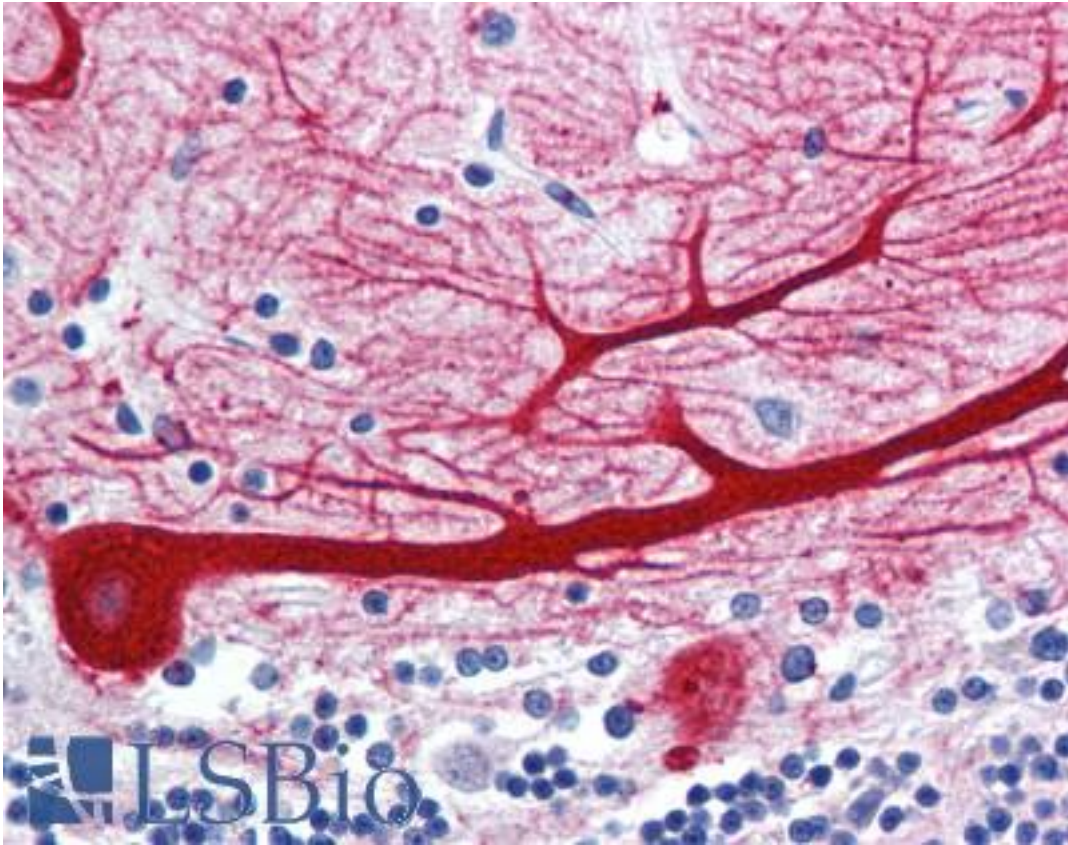


WNT10B Rabbit anti-Human Polyclonal (Internal) Antibody - LS-A9627 - LSBio

CatalogID:	LS-A9627
Target:	wingless-type MMTV integration site family, member 10B (WNT10B)
Synonyms:	WNT10B Antibody, Protein Wnt-10b Antibody, SHFM6 Antibody, WNT-12 Antibody, WNT-10B protein Antibody, WNT12 Antibody, Protein Wnt-12 Antibody
Family / Subfamily:	WNT / not assigned-WNT
Host	WNT10B antibody was produced in Rabbit
Clonality:	Polyclonal
Immunogen Species:	WNT10B antibody was raised against Human
Antigen Type:	Synthetic peptide
Immunogen:	WNT10B antibody was raised against synthetic 15 amino acid peptide from internal region of human WNT10B. Percent identity with other species by BLAST analysis: Human, Gorilla, Orangutan, Gibbon, Monkey, Mouse, Rat, Hamster, Dog, Bat, Pig (100%); Marmoset, Elephant, Panda, Horse, Rabbit (93%).
Specificity:	Human WNT10B. BLAST analysis of the peptide immunogen showed no homology with other human proteins.
Epitope:	Internal
Reactivity:	Human, Gorilla, Orangutan, Gibbon, Mouse, Rat, Bat, Dog, Hamster, Pig
Predicted Reactivity:	Monkey, Horse, Rabbit
Purification:	Immunoaffinity purified
Presentation:	PBS, 0.1% sodium azide.
Recommended Storage:	Long term: -70°C; Short term: +4°C
Uses:	IHC - Paraffin (5 µg/ml) (Optimal dilution to be determined by the researcher)
Size:	50 µg
Concentration:	1 mg/ml

Immunohistochemistry Image:



Anti-WNT10B antibody LS-A9627 IHC of human brain, cerebellum. Immunohistochemistry of formalin-fixed, paraffin-embedded tissue after heat-induced antigen retrieval.

Requested From:

Japan

Laboratory Reagent For In Vitro Research Use Only

Not for resale without prior written consent from LifeSpan BioSciences, Inc.

Created on 9/23/2014

© 2014 LifeSpan BioSciences