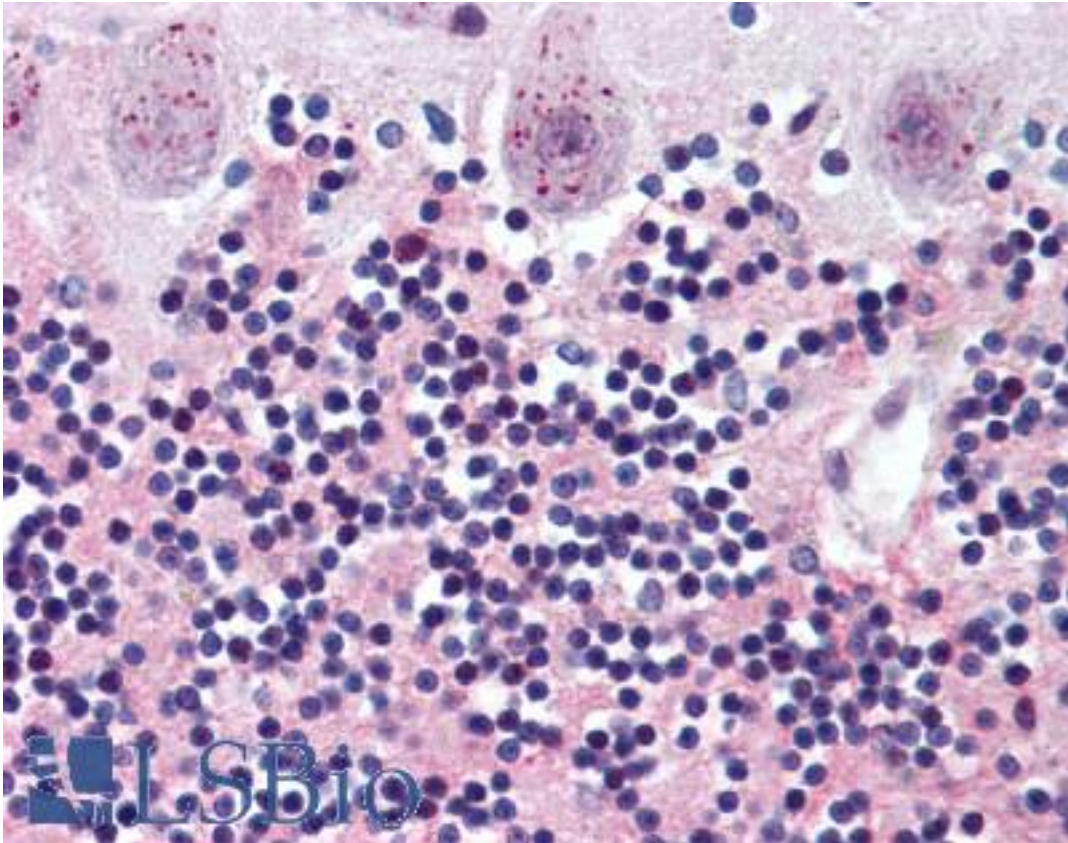


**WNT2 / IRP Rabbit anti-Human Polyclonal (Internal) Antibody - LS-A9608 - LSBio**

<b>CatalogID:</b>	LS-A9608
<b>Target:</b>	wingless-type MMTV integration site family member 2 (WNT2)
<b>Synonyms:</b>	WNT2 Antibody, IRP Antibody, Int-1-like protein 1 Antibody, Int-1-related protein Antibody, Protein Wnt-2 Antibody, Secreted growth factor Antibody, INT1L1 Antibody
<b>Family / Subfamily:</b>	WNT / not assigned-WNT
<b>Host</b>	WNT2 antibody was produced in Rabbit
<b>Clonality:</b>	Polyclonal
<b>Immunogen Species:</b>	WNT2 / IRP antibody was raised against Human
<b>Antigen Type:</b>	Synthetic peptide
<b>Immunogen:</b>	WNT2 / IRP antibody was raised against synthetic 15 amino acid peptide from internal region of human WNT2. Percent identity with other species by BLAST analysis: Human, Chimpanzee, Gorilla, Orangutan, Gibbon, Baboon, Monkey, Marmoset (100%); Galago, Mouse, Rat, Ferret, Sheep, Hamster, Elephant, Panda, Dog, Bovine, Cat, Bat, Rabbit, Pig, Opossum, Guinea pig, Turkey, Chicken, Armadillo, Platypus (93%); Horse (87%).
<b>Specificity:</b>	Human WNT2. BLAST analysis of the peptide immunogen showed no homology with other human proteins.
<b>Epitope:</b>	Internal
<b>Reactivity:</b>	Human, Chimpanzee, Gorilla, Orangutan, Gibbon, Monkey
<b>Predicted Reactivity:</b>	Mouse, Rat, Bat, Bovine, Dog, Guinea pig, Hamster, Pig, Rabbit, Sheep, Chicken
<b>Purification:</b>	Immunoaffinity purified
<b>Presentation:</b>	PBS, 0.1% sodium azide.
<b>Recommended Storage:</b>	Long term: -70°C; Short term: +4°C
<b>Uses:</b>	IHC - Paraffin (10 - 15 µg/ml) (Optimal dilution to be determined by the researcher)
<b>Size:</b>	50 µg
<b>Concentration:</b>	1 mg/ml

**Immunohistochemistry Image:**



Anti-WNT2 antibody LS-A9608 IHC of human brain, cerebellum. Immunohistochemistry of formalin-fixed, paraffin-embedded tissue after heat-induced antigen retrieval.

**Requested From:**

Japan

Laboratory Reagent For In Vitro Research Use Only

Not for resale without prior written consent from LifeSpan BioSciences, Inc.

Created on 9/23/2014

© 2014 LifeSpan BioSciences