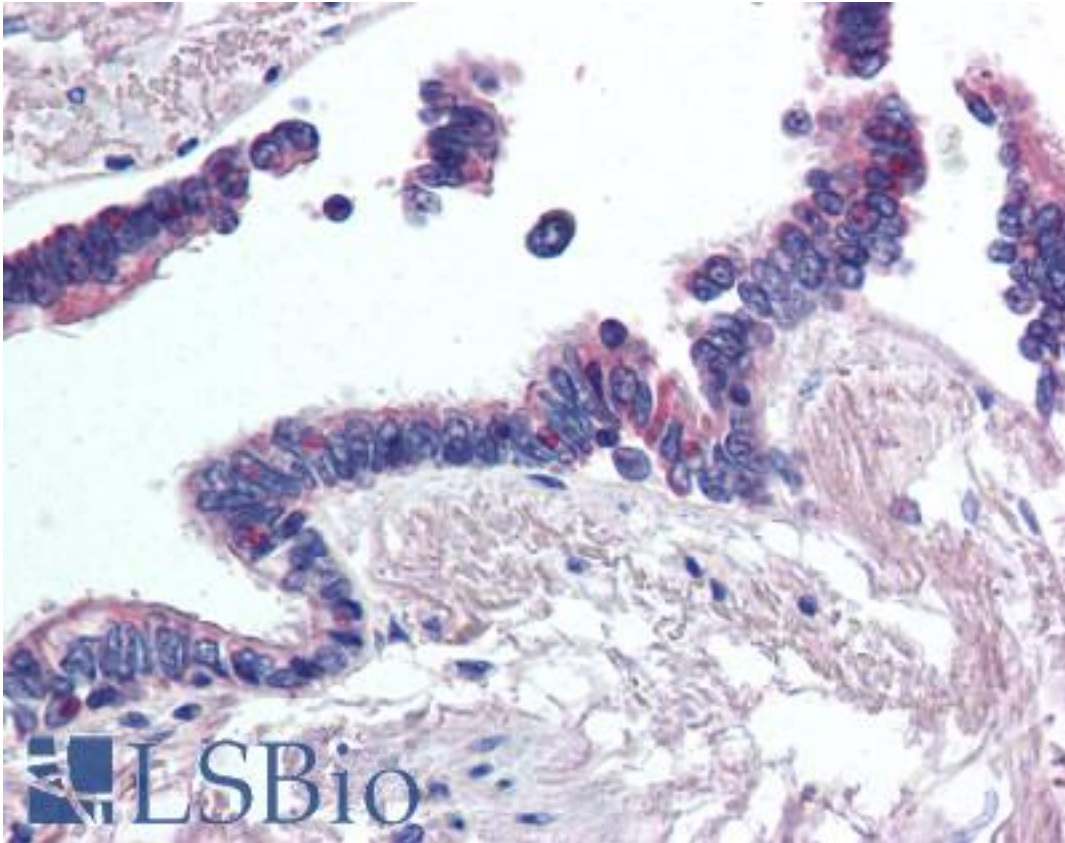


WNT2 / IRP Rabbit anti-Human Polyclonal (Internal) Antibody - LS-A9607 - LSBio

CatalogID:	LS-A9607
Target:	wingless-type MMTV integration site family member 2 (WNT2)
Synonyms:	WNT2 Antibody, IRP Antibody, Int-1-like protein 1 Antibody, Int-1-related protein Antibody, Protein Wnt-2 Antibody, Secreted growth factor Antibody, INT1L1 Antibody
Family / Subfamily:	WNT / not assigned-WNT
Host	WNT2 antibody was produced in Rabbit
Clonality:	Polyclonal
Immunogen Species:	WNT2 / IRP antibody was raised against Human
Antigen Type:	Synthetic peptide
Immunogen:	WNT2 / IRP antibody was raised against synthetic 15 amino acid peptide from internal region of human WNT2. Percent identity with other species by BLAST analysis: Human, Chimpanzee, Gorilla, Orangutan, Gibbon, Baboon, Monkey (100%); Marmoset, Mouse, Hamster, Guinea pig, Platypus (87%); Galago, Rat, Ferret, Elephant, Panda, Dog, Cat, Bat, Horse, Rabbit, Pig, Turkey, Chicken, Armadillo (80%).
Specificity:	Human WNT2. BLAST analysis of the peptide immunogen showed no homology with other human proteins.
Epitope:	Internal
Reactivity:	Human, Chimpanzee, Gorilla, Orangutan, Gibbon, Monkey
Purification:	Immunoaffinity purified
Presentation:	PBS, 0.1% sodium azide.
Recommended Storage:	Long term: -70°C; Short term: +4°C
Uses:	IHC - Paraffin (10 µg/ml) (Optimal dilution to be determined by the researcher)
Size:	50 µg
Concentration:	1 mg/ml

Immunohistochemistry Image:



Anti-WNT2 antibody LS-A9607 IHC of human lung, respiratory epithelium.
Immunohistochemistry of formalin-fixed, paraffin-embedded tissue after heat-induced antigen retrieval.

Requested From:

Japan

Laboratory Reagent For In Vitro Research Use Only

Not for resale without prior written consent from LifeSpan BioSciences, Inc.

Created on 9/23/2014

© 2014 LifeSpan BioSciences