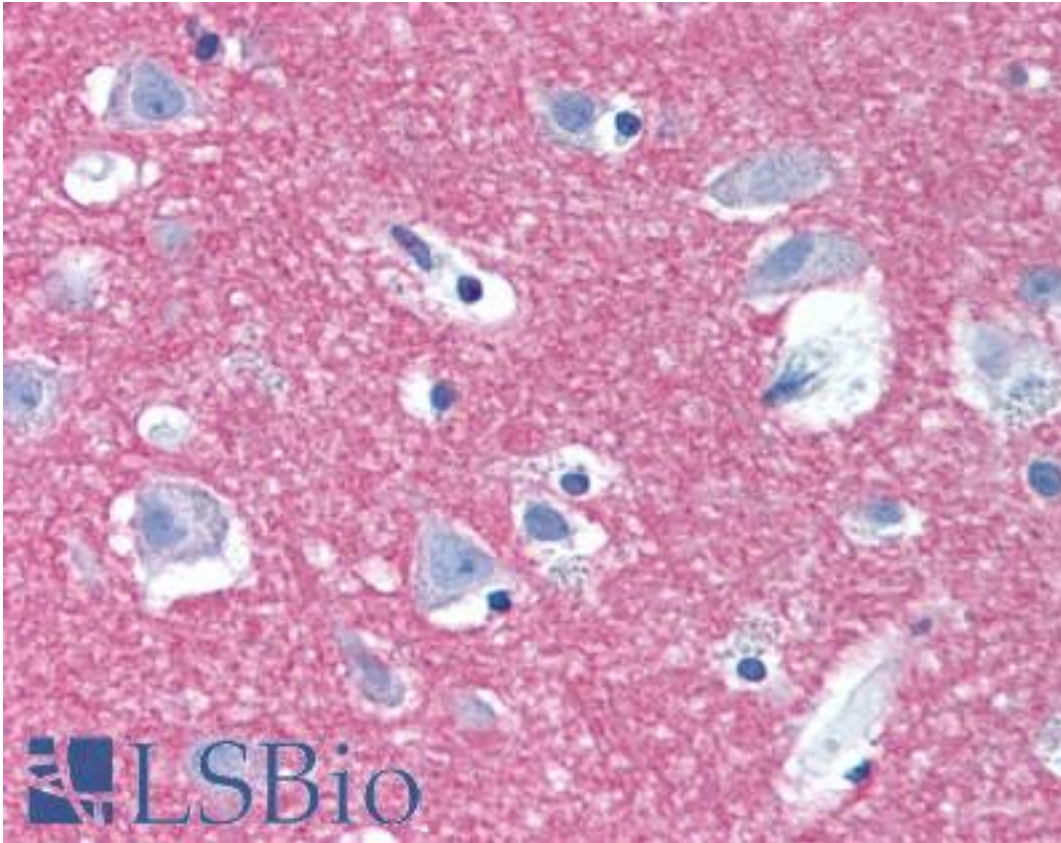


STX1A / Syntaxin 1A Rabbit anti-Human Polyclonal (Internal) Antibody - LS-A9597 - LSBio	
CatalogID:	LS-A9597
Target:	syntaxin 1A (brain) (STX1A)
Synonyms:	STX1A Antibody, Syntaxin-1A Antibody, p35-1 Antibody, SYN1a Antibody, Syntaxin 1A Antibody, Syntaxin 1A (brain) Antibody, HPC-1 Antibody, Neuron-specific antigen HPC-1 Antibody, STX1 Antibody
Family / Subfamily:	Syntaxin/epimorphin / Not assigned-Other
Host	STX1A antibody was produced in Rabbit
Clonality:	Polyclonal
Immunogen Species:	STX1A / Syntaxin 1A antibody was raised against Human
Antigen Type:	Synthetic peptide
Immunogen:	STX1A / Syntaxin 1A antibody was raised against synthetic 16 amino acid peptide from internal region of human STX1A / Syntaxin 1A. Percent identity with other species by BLAST analysis: Human, Gorilla, Orangutan, Monkey, Marmoset, Mouse, Rat, Hamster, Elephant, Panda, Dog, Bat, Bovine, Pig, Opossum, Turkey, Chicken (100%); Horse, Xenopus (94%); Gibbon, Sheep, Zebra finch, Salmon, Stickleback, Pufferfish, Zebrafish, Ant, Water flea (88%); Beetle (81%).
Specificity:	Human STX1A / Syntaxin 1A. BLAST analysis of the peptide immunogen showed no homology with other human proteins.
Epitope:	Internal
Reactivity:	Human, Gorilla, Orangutan, Monkey, Mouse, Rat, Bat, Bovine, Dog, Hamster, Pig, Chicken
Predicted Reactivity:	Horse, Xenopus
Purification:	Immunoaffinity purified
Presentation:	PBS, 0.1% sodium azide.
Recommended Storage:	Long term: -70°C; Short term: +4°C
Uses:	IHC - Paraffin (5 µg/ml) (Optimal dilution to be determined by the researcher)
Size:	50 µg
Concentration:	1 mg/ml

Immunohistochemistry Image:



Anti-STX1A / Syntaxin 1A antibody LS-A9597 IHC of human brain, cortex.
Immunohistochemistry of formalin-fixed, paraffin-embedded tissue after heat-induced antigen retrieval.

Requested From:

Japan

Laboratory Reagent For In Vitro Research Use Only

Not for resale without prior written consent from LifeSpan BioSciences, Inc.

Created on 9/23/2014

© 2014 LifeSpan BioSciences