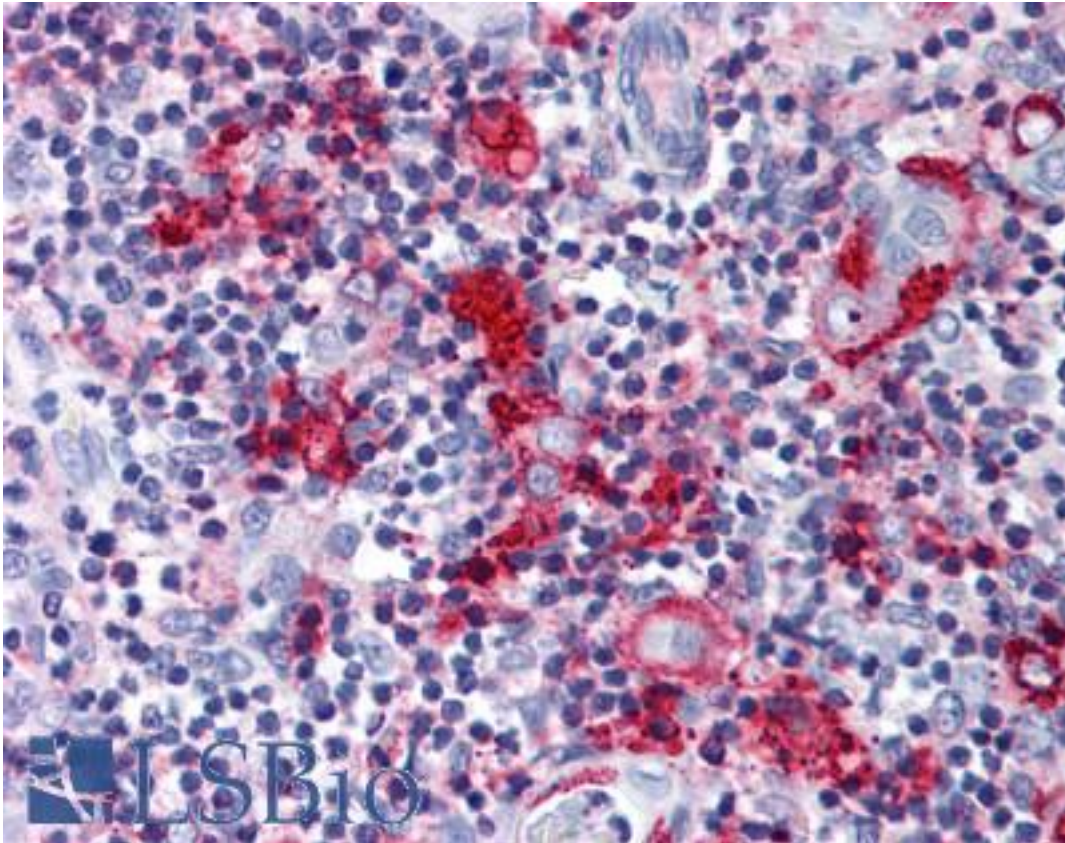


CCR9 Rabbit anti-Human Polyclonal (Extracellular Domain) Antibody - LS-A959 - LSBio

| | |
|------------------------------|--|
| CatalogID: | LS-A959 |
| Target: | chemokine (C-C motif) receptor 9 (CCR9) |
| Synonyms: | CCR9 Antibody, C-C CKR-9 Antibody, CC-CKR-9 Antibody, CCR-9 Antibody, CDw199 antigen Antibody, C-C chemokine receptor 9 Antibody, C-C chemokine receptor type 9 Antibody, Chemokine c-c motif receptor 9 Antibody, CDw199 Antibody, G protein-coupled receptor 28 Antibody, GPR-9-6 Antibody, G-protein coupled receptor 28 Antibody, GPR28 Antibody |
| Family / Subfamily: | GPCR / Chemokine |
| Host | CCR9 antibody was produced in Rabbit |
| Clonality: | Polyclonal |
| Immunogen Species: | CCR9 antibody was raised against Human |
| Antigen Type: | Synthetic peptide |
| Immunogen: | CCR9 antibody was raised against synthetic 19 amino acid peptide from 2nd extracellular domain of human CCR9. Percent identity with other species by BLAST analysis: Human, Gorilla, Gibbon (100%); Monkey (95%); Horse, Pig (89%); Bovine (84%). |
| Specificity: | Human CCR9. BLAST analysis of the peptide immunogen showed no homology with other human proteins. |
| Epitope: | Extracellular Domain |
| Reactivity: | Human, Gorilla, Gibbon |
| Predicted Reactivity: | Monkey |
| Purification: | Immunoaffinity purified |
| Presentation: | PBS, 0.1% sodium azide. |
| Recommended Storage: | Long term: -70°C; Short term: +4°C |
| Uses: | IHC - Paraffin (2 - 3 µg/ml) (Optimal dilution to be determined by the researcher) |
| Size: | 50 µg |
| Concentration: | 0.6 mg/ml |

Immunohistochemistry Image:



Anti-CCR9 antibody LS-A959 IHC of human thymus. Immunohistochemistry of formalin-fixed, paraffin-embedded tissue after heat-induced antigen retrieval.

Requested From:

Japan

Laboratory Reagent For In Vitro Research Use Only

Not for resale without prior written consent from LifeSpan BioSciences, Inc.

Created on 9/23/2014

© 2014 LifeSpan BioSciences