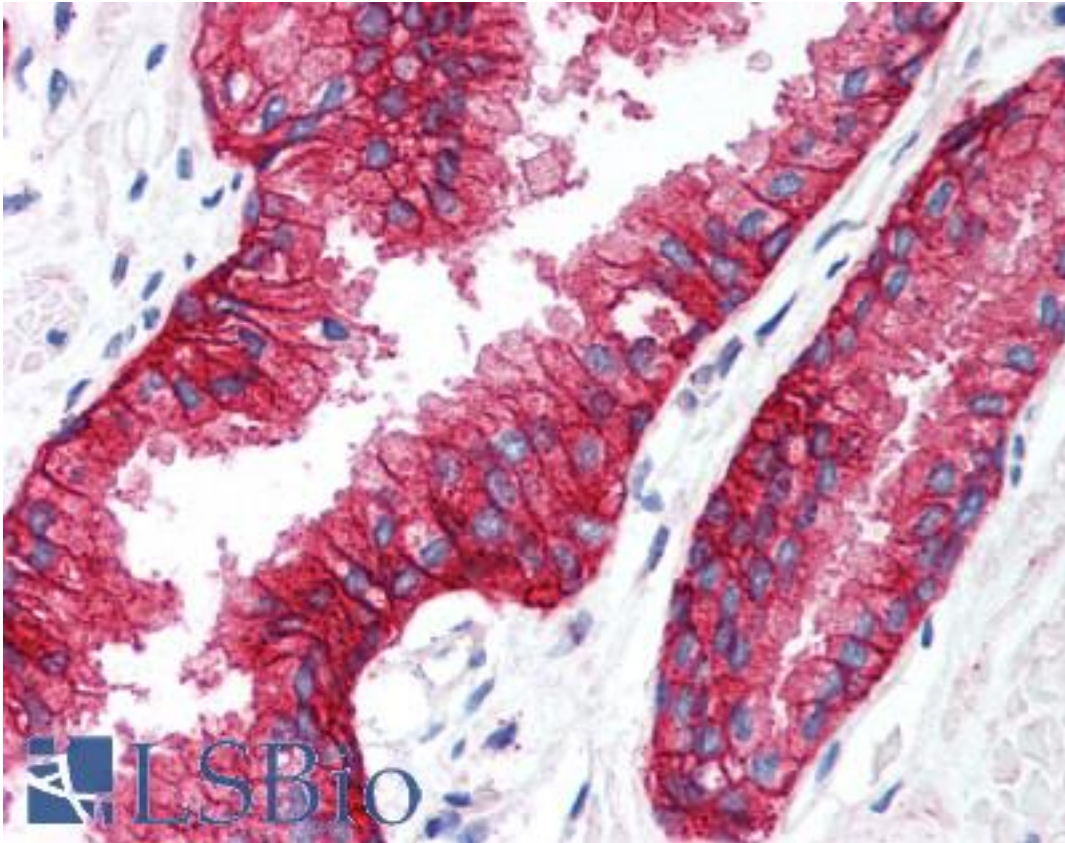


KCNN4 / KCa3.1 Rabbit anti-Human Polyclonal (C-Terminus) Antibody - LS-A9581 - LSBio	
CatalogID:	LS-A9581
Target:	potassium intermediate/small conductance calcium-activated channel, subfamily N, member 4 (KCNN4)
Synonyms:	KCNN4 Antibody, HIKCa1 Antibody, HKCa4 Antibody, HIK1 Antibody, IK1 Antibody, KCA4 Antibody, HSK4 Antibody, IKCA1 Antibody, KCa3.1 Antibody, SK4 Antibody, SKCa 4 Antibody, Putative Gardos channel Antibody, SKCa4 Antibody
Family / Subfamily:	Ion Channel / Potassium channel - calcium-activated
Host	KCNN4 antibody was produced in Rabbit
Clonality:	Polyclonal
Immunogen Species:	KCNN4 / KCa3.1 antibody was raised against Human
Antigen Type:	Synthetic peptide
Immunogen:	KCNN4 / KCa3.1 antibody was raised against synthetic 14 amino acid peptide from C-Terminus of human KCNN4. Percent identity with other species by BLAST analysis: Human, Gorilla, Gibbon, Marmoset, Mouse, Rat, Elephant, Panda, Bovine, Dog, Bat, Rabbit, Pig, Guinea pig (100%); Monkey, Horse, Platypus (93%).
Specificity:	Human KCNN4. BLAST analysis of the peptide immunogen showed no homology with other human proteins.
Epitope:	C-Terminus
Reactivity:	Human, Gorilla, Gibbon, Mouse, Rat, Bat, Bovine, Dog, Guinea pig, Pig, Rabbit
Predicted Reactivity:	Monkey, Horse
Purification:	Immunoaffinity purified
Presentation:	PBS, 0.1% sodium azide.
Recommended Storage:	Long term: -70°C; Short term: +4°C
Uses:	IHC - Paraffin (5 µg/ml) (Optimal dilution to be determined by the researcher)
Size:	50 µg
Concentration:	1 mg/ml

Immunohistochemistry Image:



Anti-KCNN4 antibody LS-A9581 IHC of human prostate. Immunohistochemistry of formalin-fixed, paraffin-embedded tissue after heat-induced antigen retrieval.

Requested From:

Japan

Laboratory Reagent For In Vitro Research Use Only

Not for resale without prior written consent from LifeSpan BioSciences, Inc.

Created on 9/23/2014

© 2014 LifeSpan BioSciences