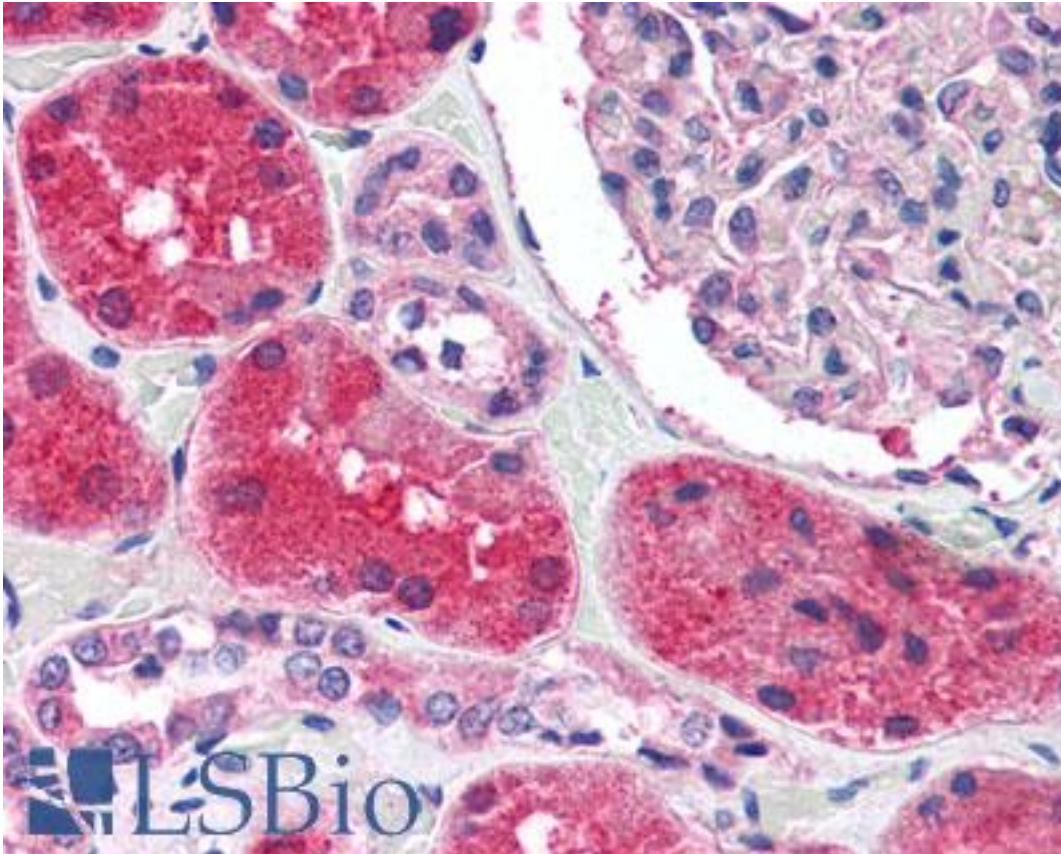


**KCNN2 Rabbit anti-Human Polyclonal (C-Terminus) Antibody - LS-A9578 - LSBio**

<b>CatalogID:</b>	LS-A9578
<b>Target:</b>	potassium intermediate/small conductance calcium-activated channel, subfamily N, member 2 (KCNN2)
<b>Synonyms:</b>	KCNN2 Antibody, HSK2 Antibody, KCa2.2 Antibody, Sk2 Antibody, SKCA2 Antibody, SKCa 2 Antibody
<b>Family / Subfamily:</b>	Ion Channel / Potassium channel - calcium-activated
<b>Host</b>	KCNN2 antibody was produced in Rabbit
<b>Clonality:</b>	Polyclonal
<b>Immunogen Species:</b>	KCNN2 antibody was raised against Human
<b>Antigen Type:</b>	Synthetic peptide
<b>Immunogen:</b>	KCNN2 antibody was raised against synthetic 18 amino acid peptide from C-terminus of human KCNN2. Percent identity with other species by BLAST analysis: Human, Gorilla, Orangutan, Gibbon, Monkey (100%); Hamster, Panda, Dog, Horse, Guinea pig (94%); Marmoset, Rat, Elephant, Bat (89%); Mouse, Pig (83%).
<b>Specificity:</b>	Human KCNN2. BLAST analysis of the peptide immunogen showed no homology with other human proteins.
<b>Epitope:</b>	C-Terminus
<b>Reactivity:</b>	Human, Gorilla, Orangutan, Gibbon, Monkey
<b>Predicted Reactivity:</b>	Dog, Guinea pig, Hamster, Horse
<b>Purification:</b>	Immunoaffinity purified
<b>Presentation:</b>	PBS, 0.1% sodium azide.
<b>Recommended Storage:</b>	Store at 4°C for short term applications. For long term storage, aliquot and store at -20°C.
<b>Uses:</b>	IHC - Paraffin (5 µg/ml) (Optimal dilution to be determined by the researcher)
<b>Size:</b>	50 µg
<b>Concentration:</b>	1 mg/ml

**Immunohistochemistry Image:**



Anti-KCNN2 antibody LS-A9578 IHC of human kidney. Immunohistochemistry of formalin-fixed, paraffin-embedded tissue after heat-induced antigen retrieval.

**Requested From:**

Japan

Laboratory Reagent For In Vitro Research Use Only

Not for resale without prior written consent from LifeSpan BioSciences, Inc.

Created on 9/23/2014

© 2014 LifeSpan BioSciences