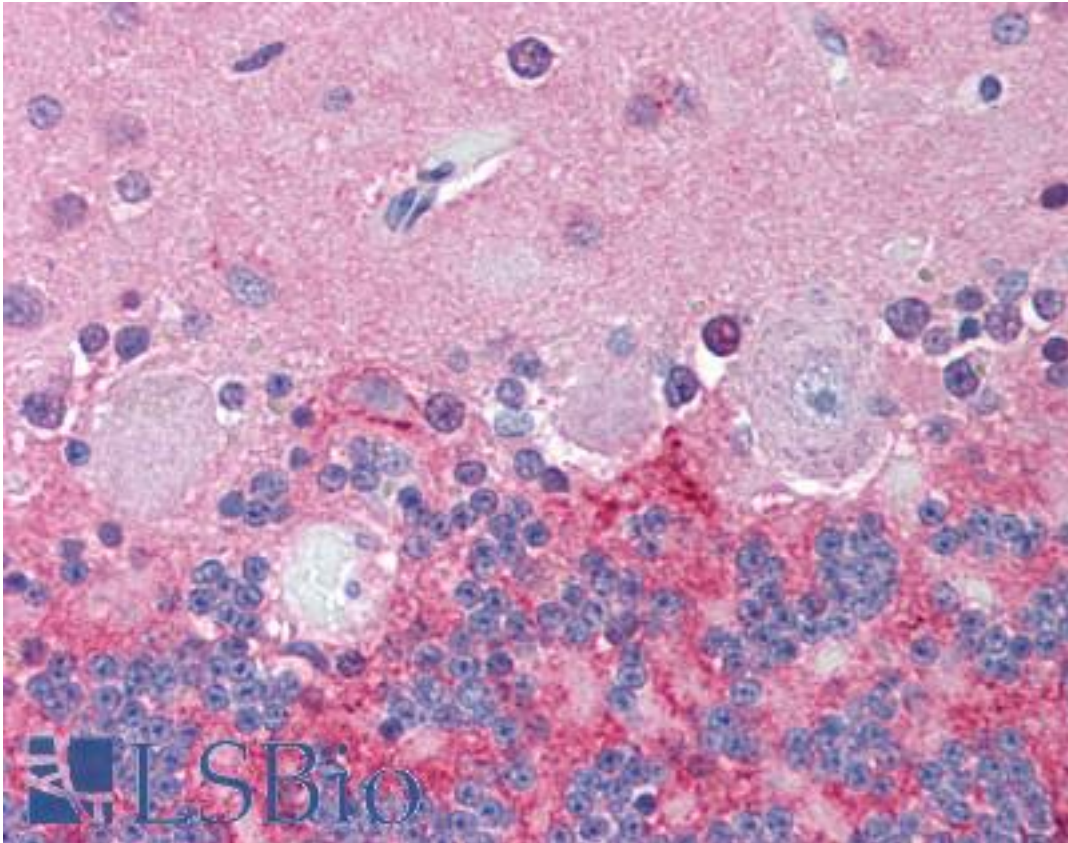


KCNJ6 / GIRK2 Rabbit anti-Human Polyclonal (N-Terminus) Antibody - LS-A9571 - LSBio	
CatalogID:	LS-A9571
Target:	potassium inwardly-rectifying channel, subfamily J, member 6 (KCNJ6)
Synonyms:	KCNJ6 Antibody, BIR1 Antibody, GIRK2 Antibody, HiGIRK2 Antibody, KATP2 Antibody, GIRK-2 Antibody, KATP-2 Antibody, KIR3.2 Antibody, Weaver Antibody, KCNJ7 Antibody
Family / Subfamily:	Ion Channel / Potassium channel - inward-rectifying
Host	KCNJ6 antibody was produced in Rabbit
Clonality:	Polyclonal
Immunogen Species:	KCNJ6 / GIRK2 antibody was raised against Human
Antigen Type:	Synthetic peptide
Immunogen:	KCNJ6 / GIRK2 antibody was raised against synthetic 18 amino acid peptide from N-terminus of human KCNJ6 / GIRK2. Percent identity with other species by BLAST analysis: Human, Gorilla, Orangutan, Gibbon, Monkey, Marmoset, Mouse, Rat, Hamster, Elephant, Dog, Bovine, Horse, Rabbit, Pig, Guinea pig (100%); Panda, Bat (94%); Opossum (89%).
Specificity:	Human KCNJ6 / GIRK2. BLAST analysis of the peptide immunogen showed no homology with other human proteins.
Epitope:	N-Terminus
Reactivity:	Human, Gorilla, Orangutan, Gibbon, Monkey, Mouse, Rat, Bovine, Dog, Guinea pig, Hamster, Horse, Pig, Rabbit
Predicted Reactivity:	Bat
Purification:	Immunoaffinity purified
Presentation:	PBS, 0.1% sodium azide.
Recommended Storage:	Store at 4°C for short term applications. For long term storage, aliquot and store at -20°C.
Uses:	IHC - Paraffin (10 - 20 µg/ml) (Optimal dilution to be determined by the researcher)
Size:	50 µg
Concentration:	1 mg/ml

Immunohistochemistry Image:



Anti-KCNJ6 / GIRK2 antibody LS-A9571 IHC of human brain, cerebellum.
Immunohistochemistry of formalin-fixed, paraffin-embedded tissue after heat-induced antigen retrieval.

Requested From:

Japan

Laboratory Reagent For In Vitro Research Use Only

Not for resale without prior written consent from LifeSpan BioSciences, Inc.

Created on 9/23/2014

© 2014 LifeSpan BioSciences