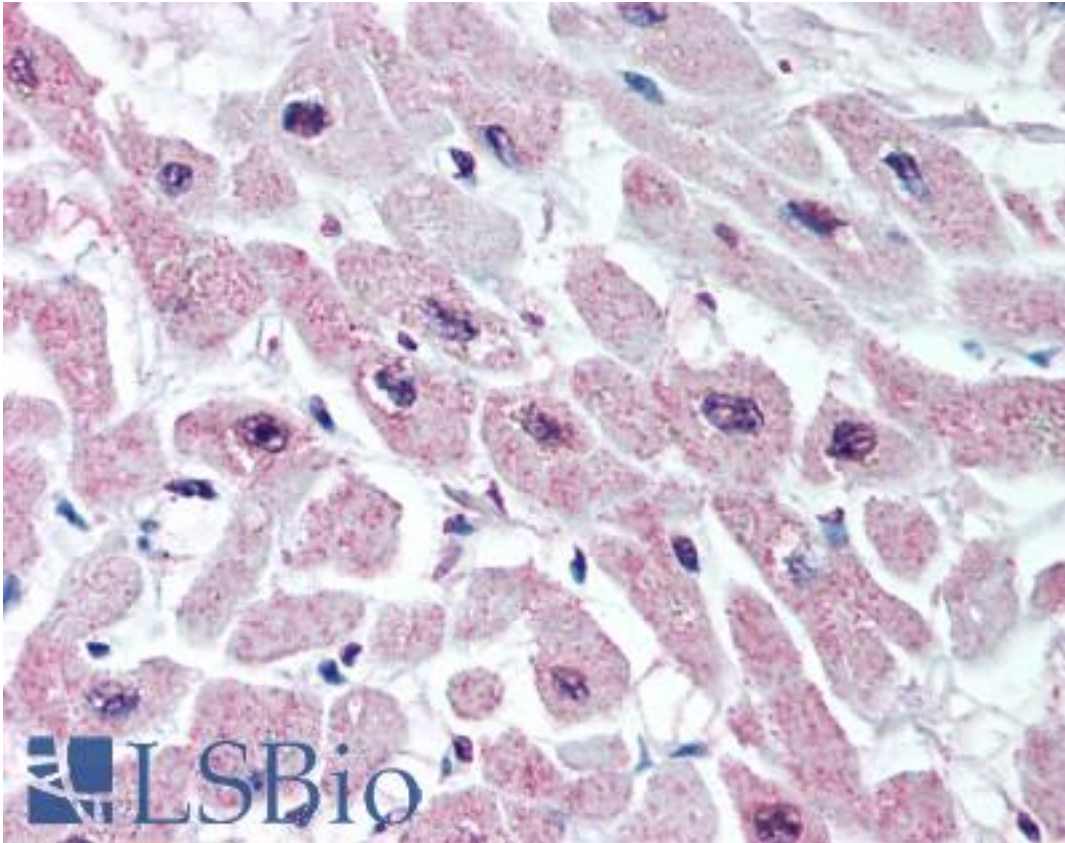


KCNJ3 / GIRK1 Rabbit anti-Human Polyclonal (Internal) Antibody - LS-A9569 - LSBio

CatalogID:	LS-A9569
Target:	potassium inwardly-rectifying channel, subfamily J, member 3 (KCNJ3)
Synonyms:	KCNJ3 Antibody, GIRK1 Antibody, Kcnf3 Antibody, KIR3.1 Antibody, GIRK-1 Antibody, HGIRK1 Antibody, KGA Antibody
Family / Subfamily:	Ion Channel / Potassium channel - inward-rectifying
Host	KCNJ3 antibody was produced in Rabbit
Clonality:	Polyclonal
Immunogen Species:	KCNJ3 / GIRK1 antibody was raised against Human
Antigen Type:	Synthetic peptide
Immunogen:	KCNJ3 / GIRK1 antibody was raised against synthetic 16 amino acid peptide from internal region of human KCNJ3. Percent identity with other species by BLAST analysis: Human, Gorilla, Gibbon, Monkey, Marmoset, Mouse, Rat, Hamster, Elephant, Bovine, Horse, Pig, Guinea pig (100%); Turkey, Chicken, Platypus (94%); Bat (88%); Xenopus, Stickleback (81%).
Specificity:	Human KCNJ3. BLAST analysis of the peptide immunogen showed no homology with other human proteins, except NID2 (100%), CSE1L (50%).
Epitope:	Internal
Reactivity:	Human, Gorilla, Gibbon, Monkey, Mouse, Rat, Bovine, Guinea pig, Hamster, Horse, Pig
Predicted Reactivity:	Chicken
Purification:	Immunoaffinity purified
Presentation:	PBS, 0.1% sodium azide.
Recommended Storage:	Long term: -70°C; Short term: +4°C
Uses:	IHC - Paraffin (10 - 15 µg/ml) (Optimal dilution to be determined by the researcher)
Size:	50 µg
Concentration:	1 mg/ml

Immunohistochemistry Image:



Anti-KCNJ3 antibody LS-A9569 IHC of human heart. Immunohistochemistry of formalin-fixed, paraffin-embedded tissue after heat-induced antigen retrieval.

Requested From:

Japan

Laboratory Reagent For In Vitro Research Use Only

Not for resale without prior written consent from LifeSpan BioSciences, Inc.

Created on 9/23/2014

© 2014 LifeSpan BioSciences