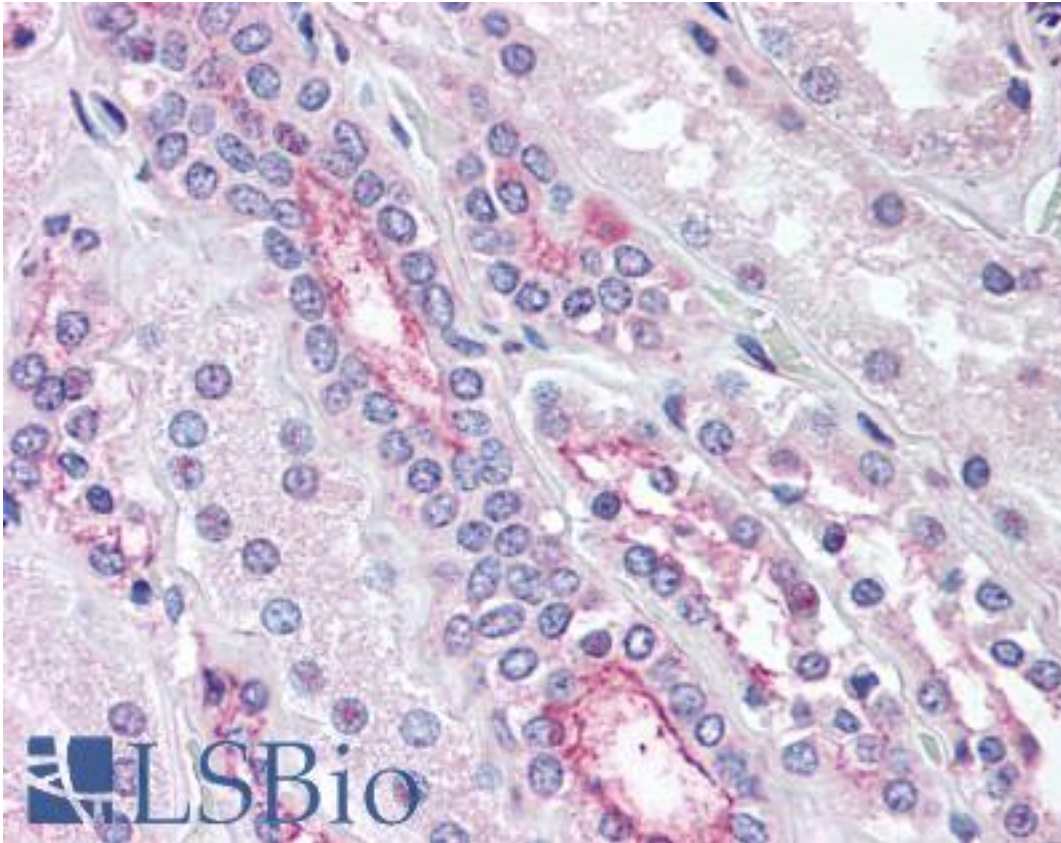


KCNE3 Rabbit anti-Human Polyclonal (Internal) Antibody - LS-A9564 - LSBio	
CatalogID:	LS-A9564
Target:	potassium voltage-gated channel, Isk-related family, member 3 (KCNE3)
Synonyms:	KCNE3 Antibody, MinK-related peptide 2 Antibody, HOKPP Antibody, HYPP Antibody, MiRP2 Antibody
Family / Subfamily:	Ion Channel / Potassium channel - KCNE
Host	KCNE3 antibody was produced in Rabbit
Clonality:	Polyclonal
Immunogen Species:	KCNE3 antibody was raised against Human
Antigen Type:	Synthetic peptide
Immunogen:	KCNE3 antibody was raised against synthetic 14 amino acid peptide from internal region of human KCNE3. Percent identity with other species by BLAST analysis: Human, Gorilla, Gibbon, Monkey, Mouse, Rat, Hamster, Elephant, Panda, Bovine, Dog, Bat, Horse, Rabbit, Pig, Opossum, Chicken, Platypus (100%); Marmoset, Xenopus (93%).
Specificity:	Human KCNE3. BLAST analysis of the peptide immunogen showed no homology with other human proteins.
Epitope:	Internal
Reactivity:	Human, Gorilla, Gibbon, Mouse, Rat, Bat, Bovine, Dog, Hamster, Horse, Pig, Rabbit, Chicken
Predicted Reactivity:	Monkey, Xenopus
Purification:	Immunoaffinity purified
Presentation:	PBS, 0.1% sodium azide.
Recommended Storage:	Long term: -70°C; Short term: +4°C
Uses:	IHC - Paraffin (10 - 20 µg/ml) (Optimal dilution to be determined by the researcher)
Size:	50 µg
Concentration:	1 mg/ml

Immunohistochemistry Image:



Anti-KCNE3 antibody LS-A9564 IHC of human kidney. Immunohistochemistry of formalin-fixed, paraffin-embedded tissue after heat-induced antigen retrieval.

Requested From:

Japan

Laboratory Reagent For In Vitro Research Use Only

Not for resale without prior written consent from LifeSpan BioSciences, Inc.

Created on 9/23/2014

© 2014 LifeSpan BioSciences