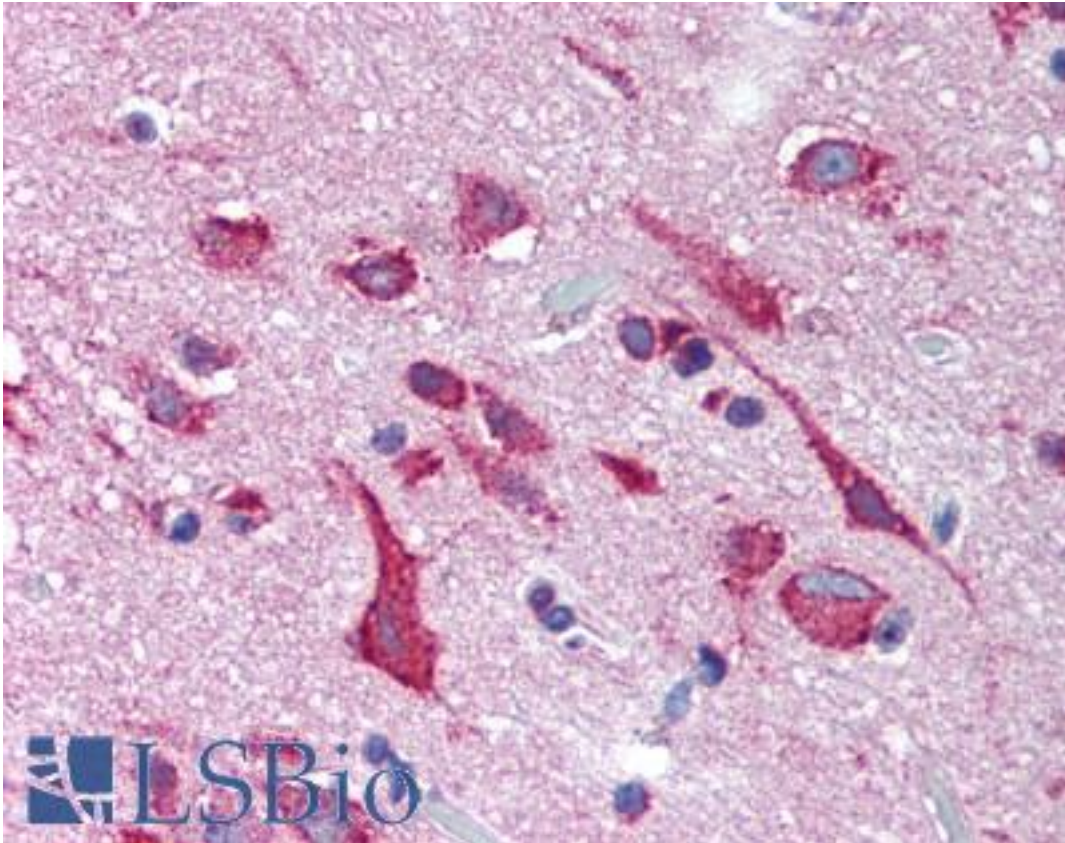


KCNH2 / HERG Rabbit anti-Human Polyclonal (Internal) Antibody - LS-A9561 - LSBio	
CatalogID:	LS-A9561
Target:	potassium voltage-gated channel, subfamily H (eag-related), member 2 (KCNH2)
Synonyms:	KCNH2 Antibody, Eag homolog Antibody, HERG-1 Antibody, ERG1 Antibody, HERG Antibody, KV11.1 Antibody, M-erg1 Antibody, H-ERG Antibody, HERG1 Antibody, SQT1 Antibody, LQT2 Antibody, Merg1 Antibody, Eag-related protein 1 Antibody, ERG-1 Antibody
Family / Subfamily:	Ion Channel / Potassium channel - Eag-related
Host	KCNH2 antibody was produced in Rabbit
Clonality:	Polyclonal
Immunogen Species:	KCNH2 / HERG antibody was raised against Human
Antigen Type:	Synthetic peptide
Immunogen:	KCNH2 / HERG antibody was raised against synthetic 16 amino acid peptide from internal region of human KCNH2 / Kv11.1. Percent identity with other species by BLAST analysis: Human, Gibbon, Monkey, Marmoset, Mouse, Rat, Hamster, Elephant, Panda, Bovine, Dog, Horse, Rabbit, Pig (100%); Bat, Guinea pig (94%).
Specificity:	Human KCNH2 / Kv11.1. BLAST analysis of the peptide immunogen showed no homology with other human proteins.
Epitope:	Internal
Reactivity:	Human, Gibbon, Monkey, Mouse, Rat, Bovine, Dog, Hamster, Horse, Pig, Rabbit
Predicted Reactivity:	Bat, Guinea pig
Purification:	Immunoaffinity purified
Presentation:	PBS, 0.1% sodium azide.
Recommended Storage:	Long term: -70°C; Short term: +4°C
Uses:	IHC - Paraffin (5 µg/ml) (Optimal dilution to be determined by the researcher)
Size:	50 µg
Concentration:	0.9 mg/ml

Immunohistochemistry Image:



Anti-KCNH2 / Kv11.1 antibody LS-A9561 IHC of human brain, cortex. Immunohistochemistry of formalin-fixed, paraffin-embedded tissue after heat-induced antigen retrieval.

Requested From:

Japan

Laboratory Reagent For In Vitro Research Use Only

Not for resale without prior written consent from LifeSpan BioSciences, Inc.

Created on 9/23/2014

© 2014 LifeSpan BioSciences