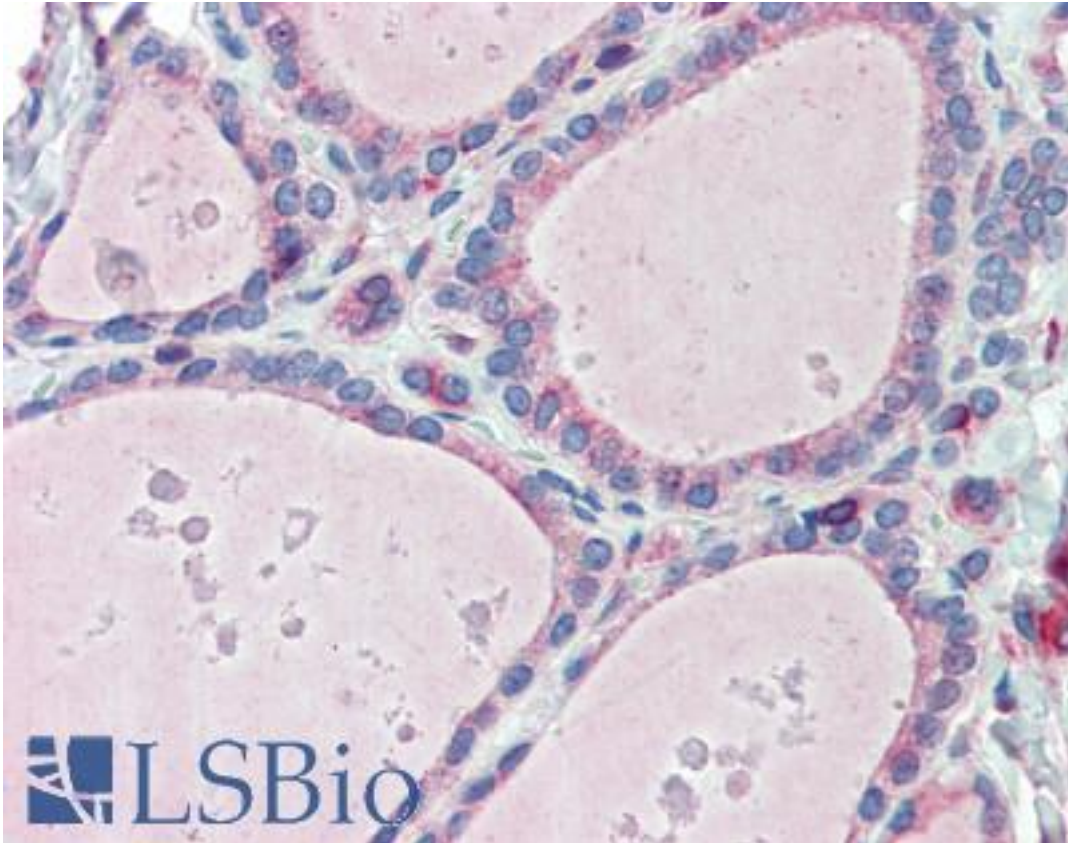


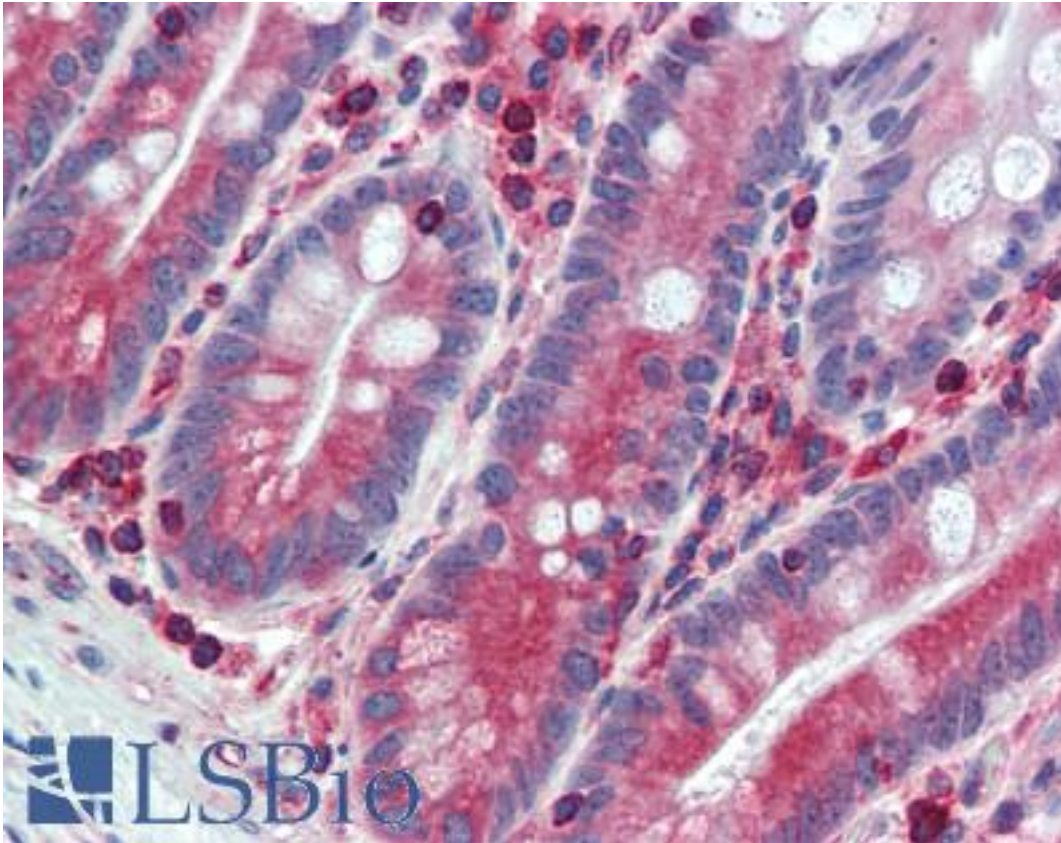
ESYT1 Rabbit anti-Human Polyclonal (C-Terminus) Antibody - LS-A9554 - LSBio	
CatalogID:	LS-A9554
Target:	extended synaptotagmin-like protein 1 (ESYT1)
Synonyms:	ESYT1 Antibody, E-Syt1 Antibody, Extended synaptotagmin-1 Antibody, KIAA0747 Antibody, MBC2 Antibody, FAM62A Antibody
Host	ESYT1 antibody was produced in Rabbit
Clonality:	Polyclonal
Immunogen Species:	ESYT1 antibody was raised against Human
Antigen Type:	Synthetic peptide
Immunogen:	ESYT1 antibody was raised against synthetic 16 amino acid peptide from C-terminus of human ESYT1 / FAM62A. Percent identity with other species by BLAST analysis: Human (100%); Orangutan, Gibbon, Monkey (94%); Marmoset (88%); Bovine, Dog, Horse, Pig (81%).
Specificity:	Human ESYT1 / FAM62A. BLAST analysis of the peptide immunogen showed no homology with other human proteins.
Epitope:	C-Terminus
Reactivity:	Human
Predicted Reactivity:	Orangutan, Gibbon, Monkey
Purification:	Immunoaffinity purified
Presentation:	PBS, 0.1% sodium azide.
Recommended Storage:	Long term: -70°C; Short term: +4°C
Uses:	IHC - Paraffin (10 - 12.5 µg/ml) (Optimal dilution to be determined by the researcher)
Size:	50 µg
Concentration:	1 mg/ml

Immunohistochemistry Image:



Anti-ESYT1 / FAM62A antibody LS-A9554 IHC of human thyroid. Immunohistochemistry of formalin-fixed, paraffin-embedded tissue after heat-induced antigen retrieval.

Immunohistochemistry Image:



Anti-ESYT1 / FAM62A antibody LS-A9554 IHC of human small intestine.
Immunohistochemistry of formalin-fixed, paraffin-embedded tissue after heat-induced antigen retrieval.

Requested From:

Japan

Laboratory Reagent For In Vitro Research Use Only

Not for resale without prior written consent from LifeSpan BioSciences, Inc.

Created on 9/23/2014

© 2014 LifeSpan BioSciences