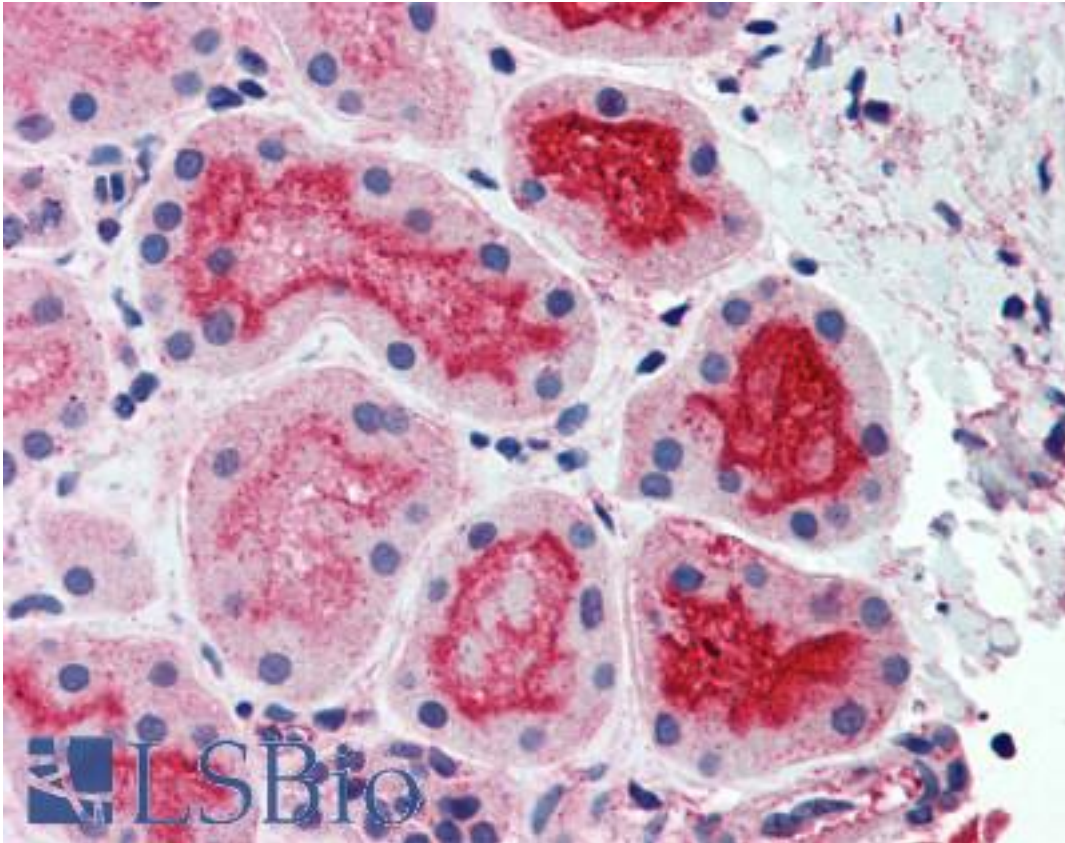


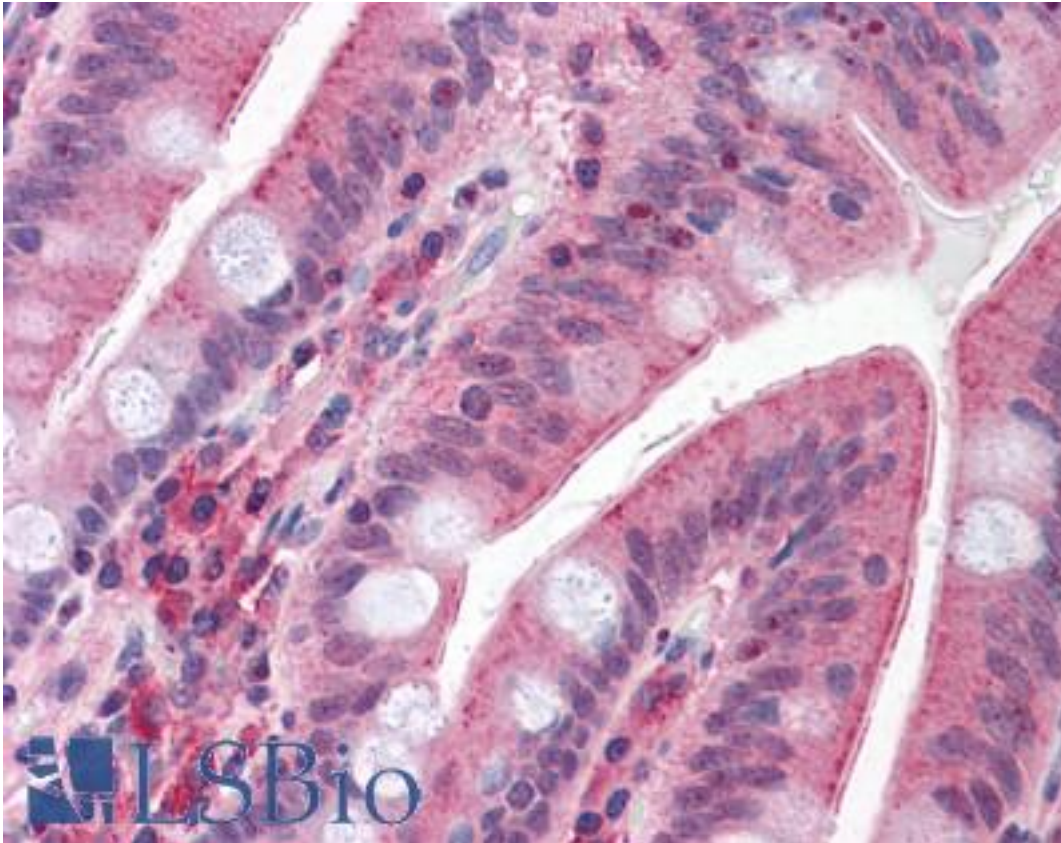
CDHR5 / MUCDHL Rabbit anti-Human Polyclonal (Cytoplasmic Domain) Antibody - LS-A9541 - LSBio	
CatalogID:	LS-A9541
Target:	cadherin-related family member 5 (CDHR5)
Synonyms:	CDHR5 Antibody, Mu-protocadherin Antibody, Mucin and cadherin-like Antibody, MUPCDH Antibody, Mucin-like protocadherin Antibody, MU-PCDH Antibody, MUCDHL Antibody, MUCDHL-ALT Antibody, MUCDHL-FL Antibody
Family / Subfamily:	Mucin / not assigned-Mucin
Host	CDHR5 antibody was produced in Rabbit
Clonality:	Polyclonal
Immunogen Species:	CDHR5 / MUCDHL antibody was raised against Human
Antigen Type:	Synthetic peptide
Immunogen:	CDHR5 / MUCDHL antibody was raised against synthetic 17 amino acid peptide from cytoplasmic domain of human CDHR5 / MUPCDH. Percent identity with other species by BLAST analysis: Human, Gorilla, Monkey, Bovine, Elephant, Panda, Rabbit, Pig (100%).
Specificity:	Human CDHR5 / MUPCDH. BLAST analysis of the peptide immunogen showed no homology with other human proteins.
Epitope:	Cytoplasmic Domain
Reactivity:	Human, Gorilla, Monkey, Bovine, Pig, Rabbit
Purification:	Immunoaffinity purified
Presentation:	PBS, 0.1% sodium azide.
Recommended Storage:	Long term: -70°C; Short term: +4°C
Uses:	IHC - Paraffin (2.5 - 5 µg/ml) (Optimal dilution to be determined by the researcher)
Size:	50 µg
Concentration:	1 mg/ml

Immunohistochemistry Image:



Anti-CDHR5 / MUPCDH antibody LS-A9541 IHC of human kidney. Immunohistochemistry of formalin-fixed, paraffin-embedded tissue after heat-induced antigen retrieval.

Immunohistochemistry Image:



Anti-CDHR5 / MUPCDH antibody LS-A9541 IHC of human small intestine.
Immunohistochemistry of formalin-fixed, paraffin-embedded tissue after heat-induced antigen retrieval.

Requested From:

Japan

Laboratory Reagent For In Vitro Research Use Only

Not for resale without prior written consent from LifeSpan BioSciences, Inc.

Created on 9/23/2014

© 2014 LifeSpan BioSciences