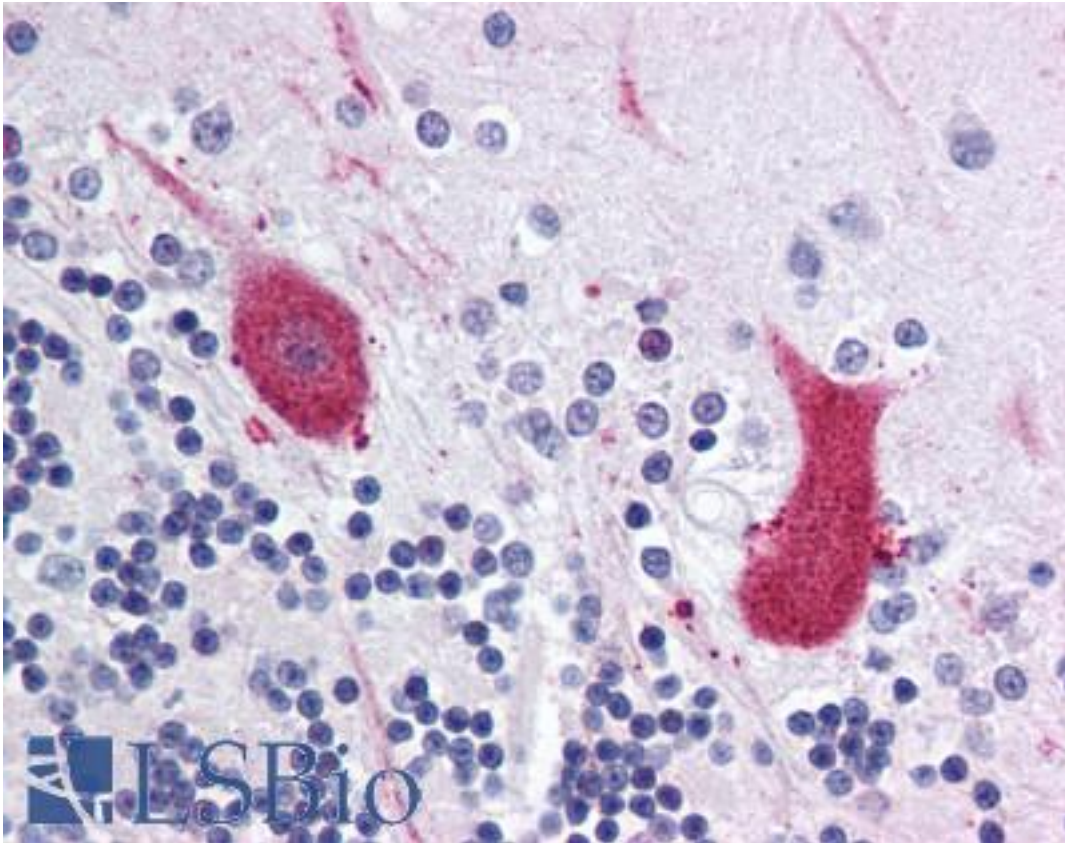


MARK1 / MARK Rabbit anti-Human Polyclonal (Internal) Antibody - LS-A9500 - LSBio

CatalogID:	LS-A9500
Target:	MAP/microtubule affinity-regulating kinase 1 (MARK1)
Synonyms:	MARK1 Antibody, KIAA1477 Antibody, Par1c Antibody, PAR1 homolog c Antibody, MARK Antibody, Par-1c Antibody
Family / Subfamily:	Protein Kinase / MARK
Host	MARK1 antibody was produced in Rabbit
Clonality:	Polyclonal
Immunogen Species:	MARK1 / MARK antibody was raised against Human
Antigen Type:	Synthetic peptide
Immunogen:	MARK1 / MARK antibody was raised against synthetic 17 amino acid peptide from internal region of human MARK1. Percent identity with other species by BLAST analysis: Human, Gibbon, Monkey, Marmoset, Bat, Rabbit (100%); Rat, Panda, Dog, Bovine, Horse (94%); Mouse (88%); Platypus, Lizard (82%).
Specificity:	Human MARK1. BLAST analysis of the peptide immunogen showed no homology with other human proteins.
Epitope:	Internal
Reactivity:	Human, Gibbon, Monkey, Bat, Rabbit
Predicted Reactivity:	Rat, Bovine, Dog, Horse
Purification:	Immunoaffinity purified
Presentation:	PBS, 0.1% sodium azide.
Recommended Storage:	Long term: -70°C; Short term: +4°C
Uses:	IHC - Paraffin (2.5 µg/ml) (Optimal dilution to be determined by the researcher)
Size:	50 µg
Concentration:	1 mg/ml

Immunohistochemistry Image:



Anti-MARK1 antibody LS-A9500 IHC of human brain, cerebellum. Immunohistochemistry of formalin-fixed, paraffin-embedded tissue after heat-induced antigen retrieval.

Requested From:

Japan

Laboratory Reagent For In Vitro Research Use Only

Not for resale without prior written consent from LifeSpan BioSciences, Inc.

Created on 9/23/2014

© 2014 LifeSpan BioSciences