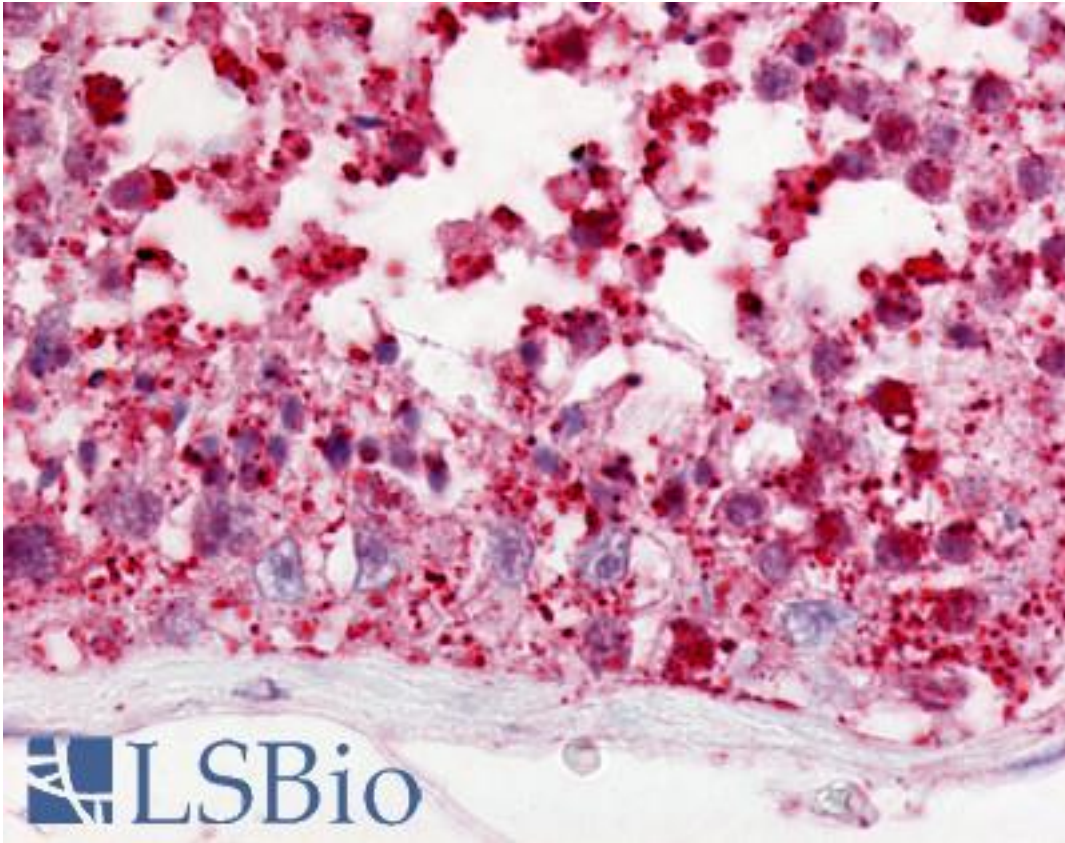


GPCRW / GPR18 Rabbit anti-Human Polyclonal (Cytoplasmic Domain) Antibody - LS-A95 - LSBio	
CatalogID:	LS-A95
Target:	G protein-coupled receptor 18 (GPR18)
Synonyms:	GPR18 Antibody, GPCRW Antibody, G protein-coupled receptor 18 Antibody, NAGly receptor Antibody, G-protein coupled receptor 18 Antibody, N-arachidonyl glycine receptor Antibody
Family / Subfamily:	GPCR / Orphan-A
Host	GPR18 antibody was produced in Rabbit
Clonality:	Polyclonal
Immunogen Species:	GPCRW / GPR18 antibody was raised against Human
Antigen Type:	Synthetic peptide
Immunogen:	GPCRW / GPR18 antibody was raised against synthetic 16 amino acid peptide from 3rd cytoplasmic domain of human GPR18. Percent identity with other species by BLAST analysis: Human, Gorilla, Gibbon, Monkey, Marmoset, Bat, Elephant, Horse, Rabbit, Pufferfish (100%); Mouse, Rat, Bovine, Pig, Opossum, Salmon, Zebrafish, Stickleback (94%); Chicken, Platypus, Lizard, Catfish (88%); Hamster, Turkey (81%).
Specificity:	Human GPR18. BLAST analysis of the peptide immunogen showed no homology with other human proteins, except ESYT3 (50%).
Epitope:	Cytoplasmic Domain
Reactivity:	Human, Gorilla, Gibbon, Monkey, Bat, Horse, Rabbit
Predicted Reactivity:	Mouse, Rat, Bovine, Pig, Zebrafish
Purification:	Immunoaffinity purified
Presentation:	PBS, 0.1% sodium azide.
Recommended Storage:	Long term: -70°C; Short term: +4°C
Usage Summary:	Immunohistochemistry: LS-A95 was validated for use in immunohistochemistry on a panel of 21 formalin-fixed, paraffin-embedded (FFPE) human tissues after heat induced antigen retrieval in pH 6.0 citrate buffer. After incubation with the primary antibody, slides were incubated with biotinylated secondary antibody, followed by alkaline phosphatase-streptavidin and chromogen. The stained slides were evaluated by a pathologist to confirm staining specificity. The optimal working concentration for LS-A95 was determined to be 10 ug/ml.
Uses:	IHC - Paraffin (10 µg/ml) (Optimal dilution to be determined by the researcher)
Size:	50 µg
Concentration:	1 mg/ml

Immunohistochemistry Image:



Anti-GPR18 antibody LS-A95 IHC of human testis. Immunohistochemistry of formalin-fixed, paraffin-embedded tissue after heat-induced antigen retrieval.

Requested From:

Japan

Laboratory Reagent For In Vitro Research Use Only

Not for resale without prior written consent from LifeSpan BioSciences, Inc.

Created on 9/23/2014

© 2014 LifeSpan BioSciences