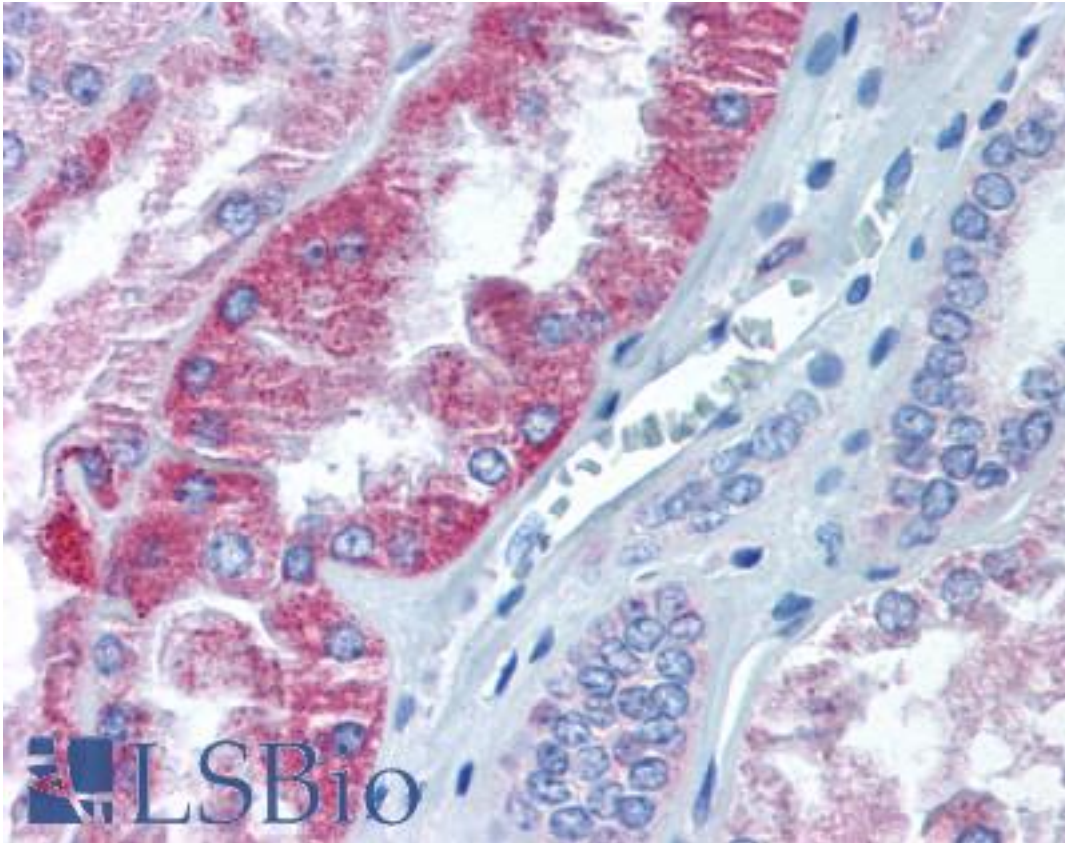


KATII / AADAT Rabbit anti-Human Polyclonal (Internal) Antibody - LS-A9492 - LSBio

CatalogID:	LS-A9492
Target:	aminoadipate aminotransferase (AADAT)
Synonyms:	AADAT Antibody, 2-aminoadipate transaminase Antibody, KAT2 Antibody, KAT/AadAT Antibody, KATII Antibody, Kynurenine aminotransferase II Antibody, Aminoadipate aminotransferase Antibody
Host	AADAT antibody was produced in Rabbit
Clonality:	Polyclonal
Immunogen Species:	KATII / AADAT antibody was raised against Human
Antigen Type:	Synthetic peptide
Immunogen:	KATII / AADAT antibody was raised against synthetic 17 amino acid peptide from internal region of human AADAT. Percent identity with other species by BLAST analysis: Human (100%); Gorilla, Gibbon, Monkey (94%); Marmoset (88%); Panda, Pig (82%).
Specificity:	Human AADAT. BLAST analysis of the peptide immunogen showed no homology with other human proteins.
Epitope:	Internal
Reactivity:	Human
Predicted Reactivity:	Gorilla, Gibbon, Monkey
Purification:	Immunoaffinity purified
Presentation:	PBS, 0.1% sodium azide.
Recommended Storage:	Store at 4°C for short term applications. For long term storage, aliquot and store at -20°C.
Uses:	IHC - Paraffin (5 µg/ml) (Optimal dilution to be determined by the researcher)
Size:	50 µg
Concentration:	1 mg/ml

Immunohistochemistry Image:



Anti-AADAT antibody LS-A9492 IHC of human kidney. Immunohistochemistry of formalin-fixed, paraffin-embedded tissue after heat-induced antigen retrieval.

Requested From:

Japan

Laboratory Reagent For In Vitro Research Use Only

Not for resale without prior written consent from LifeSpan BioSciences, Inc.

Created on 9/23/2014

© 2014 LifeSpan BioSciences