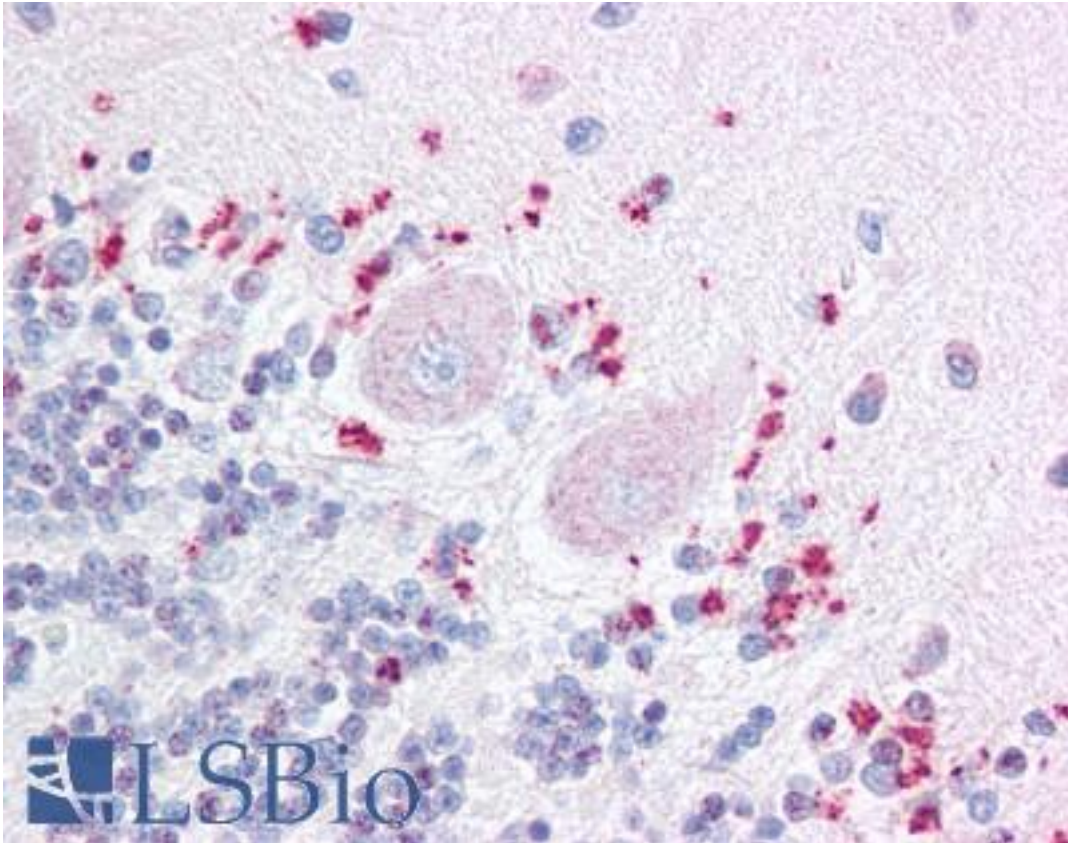


WNT7A Rabbit anti-Human Polyclonal (Internal) Antibody - LS-A9468 - LSBio

CatalogID:	LS-A9468
Target:	wingless-type MMTV integration site family, member 7A (WNT7A)
Synonyms:	WNT7A Antibody, Protein Wnt-7a Antibody, Proto-oncogene Wnt7a protein Antibody
Family / Subfamily:	WNT / not assigned-WNT
Host	WNT7A antibody was produced in Rabbit
Clonality:	Polyclonal
Immunogen Species:	WNT7A antibody was raised against Human
Antigen Type:	Synthetic peptide
Immunogen:	WNT7A antibody was raised against synthetic 12 amino acid peptide from internal region of human WNT7A. Percent identity with other species by BLAST analysis: Human, Chimpanzee, Gorilla, Orangutan, Gibbon, Monkey, Galago, Marmoset, Mouse, Rat, Hamster, Elephant, Panda, Bovine, Dog, Bat, Horse, Rabbit, Pig, Guinea pig, Turkey, Zebra finch, Chicken, Platypus, Lizard, Xenopus (100%); Seabass (92%); Stickleback, Pufferfish, Zebrafish (83%).
Specificity:	Human WNT7A. BLAST analysis of the peptide immunogen showed no homology with other human proteins.
Epitope:	Internal
Reactivity:	Human, Chimpanzee, Gorilla, Orangutan, Gibbon, Monkey, Mouse, Rat, Bat, Bovine, Dog, Guinea pig, Hamster, Horse, Pig, Rabbit, Chicken, Xenopus
Purification:	Immunoaffinity purified
Presentation:	PBS, 0.1% sodium azide.
Recommended Storage:	Long term: -70°C; Short term: +4°C
Uses:	IHC - Paraffin (20 µg/ml) (Optimal dilution to be determined by the researcher)
Size:	50 µg
Concentration:	0.7 mg/ml

Immunohistochemistry Image:



Anti-WNT7A antibody LS-A9468 IHC of human brain, cerebellum. Immunohistochemistry of formalin-fixed, paraffin-embedded tissue after heat-induced antigen retrieval.

Requested From:

Japan

Laboratory Reagent For In Vitro Research Use Only

Not for resale without prior written consent from LifeSpan BioSciences, Inc.

Created on 9/23/2014

© 2014 LifeSpan BioSciences