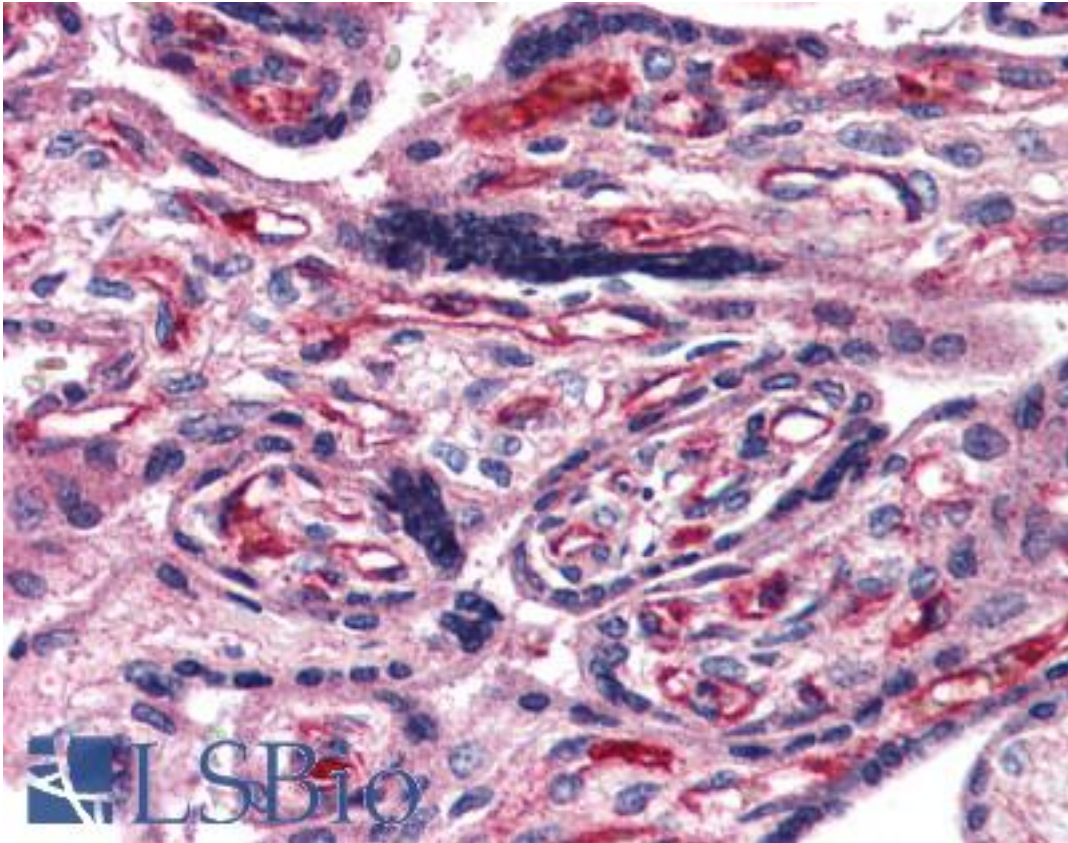


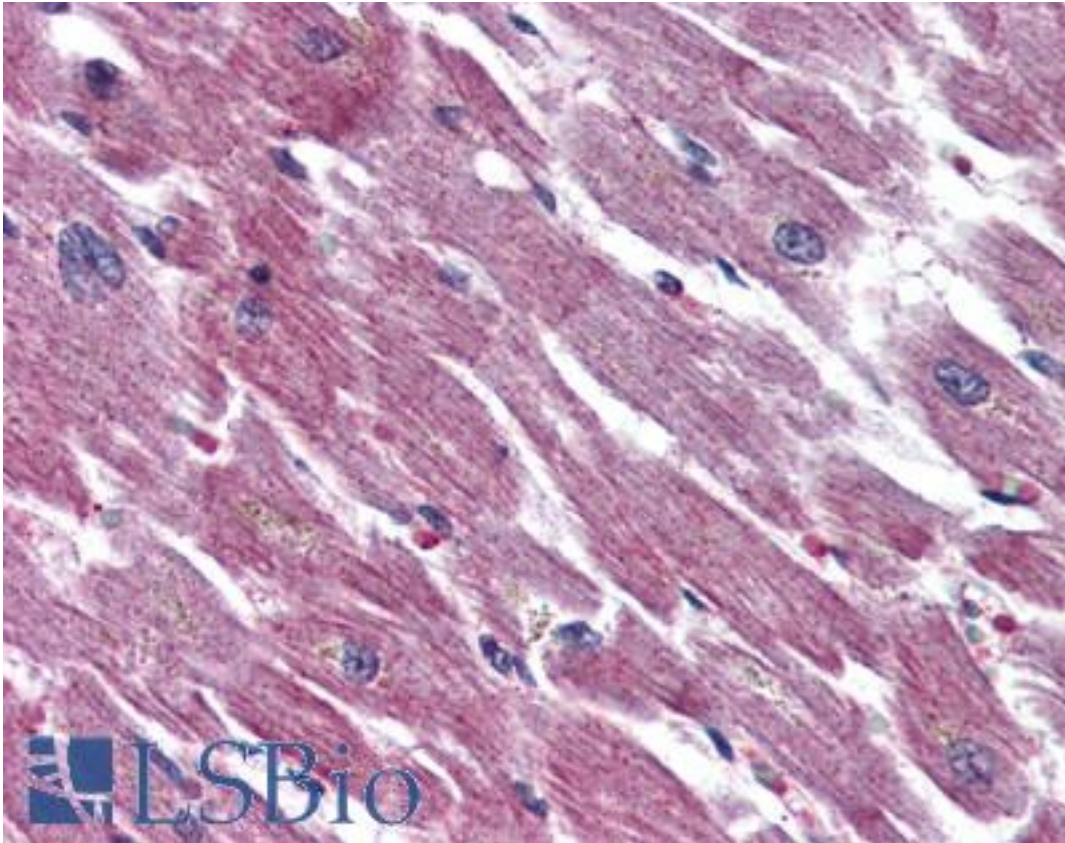
ADCYAP1R1 / PAC1 Receptor Rabbit anti-Human Polyclonal (N-Terminus) Antibody - LS-A945 - LSBio	
CatalogID:	LS-A945
Target:	adenylate cyclase activating polypeptide 1 (pituitary) receptor type I (ADCYAP1R1)
Synonyms:	ADCYAP1R1 Antibody, PAC1 Antibody, Pac1 receptor Antibody, Pac1 receptors Antibody, PAC1-R Antibody, PACAP receptor 1 Antibody, Pacap specific receptor Antibody, PACAP-R-1 Antibody, PACAP/VIP receptors Antibody, PACAP1 receptor Antibody, PACAP Receptor Antibody, Pacap receptor type 1 Antibody, Pacap type 1 receptor Antibody, PACAP type I receptor Antibody, PACAPR Antibody, PAC1R Antibody, PACAP-R1 Antibody, PACAPRI Antibody, Pvr1 Antibody, Pacap receptor type i Antibody
Family / Subfamily:	GPCR / Vasoactive intestinal polypeptide
Host	ADCYAP1R1 antibody was produced in Rabbit
Clonality:	Polyclonal
Immunogen Species:	ADCYAP1R1 / PAC1 Receptor antibody was raised against Human
Antigen Type:	Synthetic peptide
Immunogen:	ADCYAP1R1 / PAC1 Receptor antibody was raised against synthetic 18 amino acid peptide from N-terminal extracellular domain of human ADCYAP1R1. Percent identity with other species by BLAST analysis: Human, Gorilla, Gibbon, Marmoset, Bovine (100%); Dog, Pig (94%); Mouse, Rat, Elephant, Panda (89%).
Specificity:	Human ADCYAP1R1. BLAST analysis of the peptide immunogen showed no homology with other human proteins.
Epitope:	N-Terminus
Reactivity:	Human, Gorilla, Gibbon, Monkey, Bovine
Predicted Reactivity:	Dog, Pig
Purification:	Immunoaffinity purified
Presentation:	PBS, 0.1% sodium azide.
Recommended Storage:	Long term: -70°C; Short term: +4°C
Usage Summary:	Antigen retrieval requires Proteinase K treatment.
Uses:	IHC - Paraffin (5 µg/ml) (Optimal dilution to be determined by the researcher)
Size:	50 µg
Concentration:	1 mg/ml

Immunohistochemistry Image:



Anti-ADCYAP1R1 antibody LS-A945 IHC of human placenta. Immunohistochemistry of formalin-fixed, paraffin-embedded tissue after heat-induced antigen retrieval.

Immunohistochemistry Image:



Anti-ADCYAP1R1 antibody LS-A945 IHC of human heart. Immunohistochemistry of formalin-fixed, paraffin-embedded tissue after heat-induced antigen retrieval.

Requested From:

Japan

Laboratory Reagent For In Vitro Research Use Only

Not for resale without prior written consent from LifeSpan BioSciences, Inc.

Created on 9/23/2014

© 2014 LifeSpan BioSciences