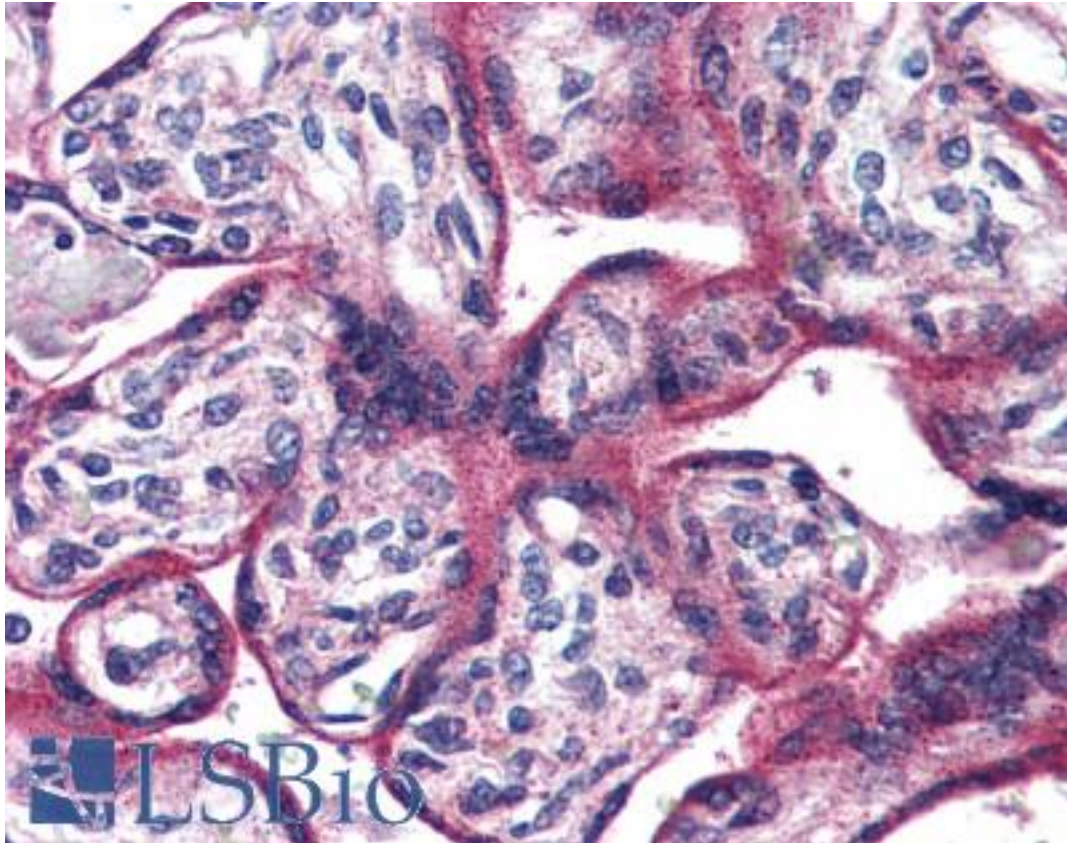


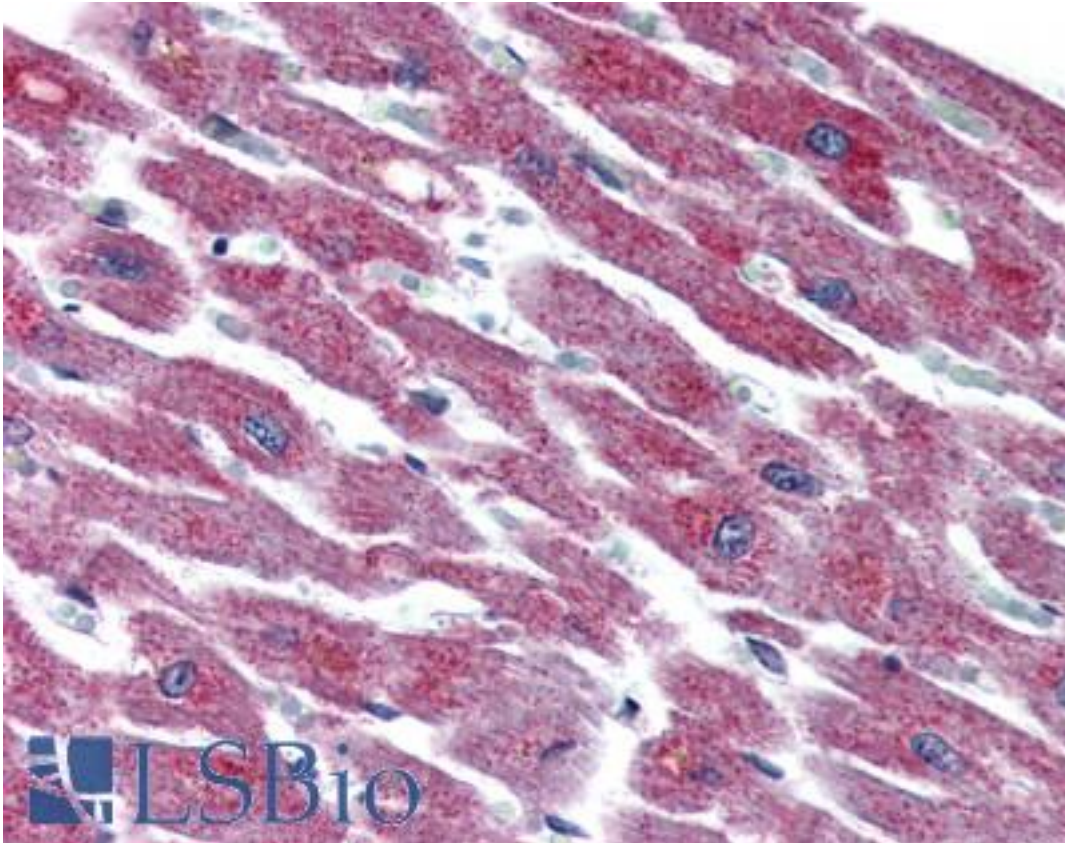
ADCYAP1R1 / PAC1 Receptor Rabbit anti-Human Polyclonal (N-Terminus) Antibody - LS-A944 - LSBio	
<b>CatalogID:</b>	LS-A944
<b>Target:</b>	adenylate cyclase activating polypeptide 1 (pituitary) receptor type I (ADCYAP1R1)
<b>Synonyms:</b>	ADCYAP1R1 Antibody, PAC1 Antibody, Pac1 receptor Antibody, Pac1 receptors Antibody, PAC1-R Antibody, PACAP receptor 1 Antibody, Pacap specific receptor Antibody, PACAP-R-1 Antibody, PACAP/VIP receptors Antibody, PACAP1 receptor Antibody, PACAP Receptor Antibody, Pacap receptor type 1 Antibody, Pacap type 1 receptor Antibody, PACAP type I receptor Antibody, PACAPR Antibody, PAC1R Antibody, PACAP-R1 Antibody, PACAPRI Antibody, Pvr1 Antibody, Pacap receptor type i Antibody
<b>Family / Subfamily:</b>	GPCR / Vasoactive intestinal polypeptide
<b>Host</b>	ADCYAP1R1 antibody was produced in Rabbit
<b>Clonality:</b>	Polyclonal
<b>Immunogen Species:</b>	ADCYAP1R1 / PAC1 Receptor antibody was raised against Human
<b>Antigen Type:</b>	Synthetic peptide
<b>Immunogen:</b>	ADCYAP1R1 / PAC1 Receptor antibody was raised against synthetic 18 amino acid peptide from N-terminal extracellular domain of human ADCYAP1R1. Percent identity with other species by BLAST analysis: Human, Gorilla, Gibbon, Monkey, Marmoset (100%); Elephant, Panda, Horse, Pig (89%); Bovine (83%).
<b>Specificity:</b>	Human ADCYAP1R1. BLAST analysis of the peptide immunogen showed no homology with other human proteins.
<b>Epitope:</b>	N-Terminus
<b>Reactivity:</b>	Human, Gorilla, Gibbon, Monkey
<b>Purification:</b>	Immunoaffinity purified
<b>Presentation:</b>	PBS, 0.1% sodium azide.
<b>Recommended Storage:</b>	Long term: -70°C; Short term: +4°C
<b>Usage Summary:</b>	Immunohistochemistry with formalin-fixed paraffin-embedded tissues requires pretreatment with Proteinase K.
<b>Uses:</b>	IHC - Paraffin (5 - 7 µg/ml), ELISA (Optimal dilution to be determined by the researcher)
<b>Size:</b>	50 µg
<b>Concentration:</b>	1 mg/ml

**Immunohistochemistry Image:**



Anti-ADCYAP1R1 antibody LS-A944 IHC of human placenta. Immunohistochemistry of formalin-fixed, paraffin-embedded tissue after heat-induced antigen retrieval.

**Immunohistochemistry Image:**



Anti-ADCYAP1R1 antibody LS-A944 IHC of human heart. Immunohistochemistry of formalin-fixed, paraffin-embedded tissue after heat-induced antigen retrieval.

**Requested From:**

Japan

Laboratory Reagent For In Vitro Research Use Only

Not for resale without prior written consent from LifeSpan BioSciences, Inc.

Created on 9/23/2014

© 2014 LifeSpan BioSciences