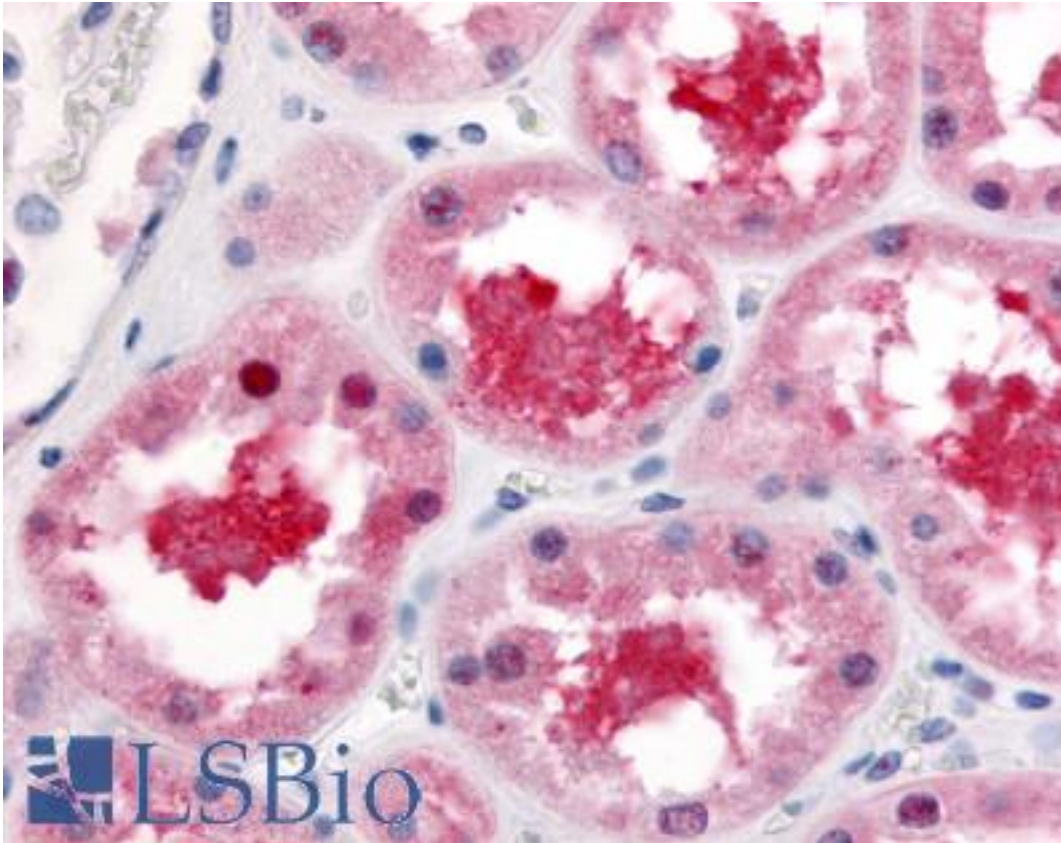


ABCB1 / MDR1 / P Glycoprotein Rabbit anti-Human Polyclonal (Cytoplasmic Domain) Antibody - LS-A9438 - LSBio	
<b>CatalogID:</b>	LS-A9438
<b>Target:</b>	ATP-binding cassette, sub-family B (MDR/TAP), member 1 (ABCB1)
<b>Synonyms:</b>	ABCB1 Antibody, ABC20 Antibody, Abcb1b Antibody, CLCS Antibody, Colchicin sensitivity Antibody, CD243 Antibody, Doxorubicin resistance Antibody, IBD13 Antibody, gp170 Antibody, MDR1 Antibody, Multidrug resistance protein 1 Antibody, P glycoprotein Antibody, P-glycoprotein 1 Antibody, P-GP Antibody, CD243 antigen Antibody, PGY1 Antibody
<b>Family / Subfamily:</b>	Transporter / ATP-binding cassette - ABCB/MDR
<b>Host</b>	ABCB1 antibody was produced in Rabbit
<b>Clonality:</b>	Polyclonal
<b>Immunogen Species:</b>	ABCB1 / MDR1 / P Glycoprotein antibody was raised against Human
<b>Antigen Type:</b>	Synthetic peptide
<b>Immunogen:</b>	ABCB1 / MDR1 / P Glycoprotein antibody was raised against synthetic 15 amino acid peptide from cytoplasmic domain of human ABCB1 / MDR1. Percent identity with other species by BLAST analysis: Human, Gorilla, Gibbon, Marmoset (100%); Monkey (93%); Mouse, Rat, Hamster, Cat, Dog, Pig (80%).
<b>Specificity:</b>	Human ABCB1 / MDR1. BLAST analysis of the peptide immunogen showed no homology with other human proteins, except BRD4 (60%).
<b>Epitope:</b>	Cytoplasmic Domain
<b>Reactivity:</b>	Human, Gorilla, Gibbon
<b>Predicted Reactivity:</b>	Monkey
<b>Purification:</b>	Immunoaffinity purified
<b>Presentation:</b>	PBS, 0.1% sodium azide.
<b>Recommended Storage:</b>	Long term: -70°C; Short term: +4°C
<b>Uses:</b>	IHC - Paraffin (2.5 µg/ml) (Optimal dilution to be determined by the researcher)
<b>Size:</b>	50 µg
<b>Concentration:</b>	1 mg/ml

**Immunohistochemistry Image:**



Anti-ABCB1 / MDR1 antibody LS-A9438 IHC of human kidney, proximal convoluted tubules. Immunohistochemistry of formalin-fixed, paraffin-embedded tissue after heat-induced antigen retrieval.

**Requested From:**

Japan

Laboratory Reagent For In Vitro Research Use Only

Not for resale without prior written consent from LifeSpan BioSciences, Inc.

Created on 9/23/2014

© 2014 LifeSpan BioSciences