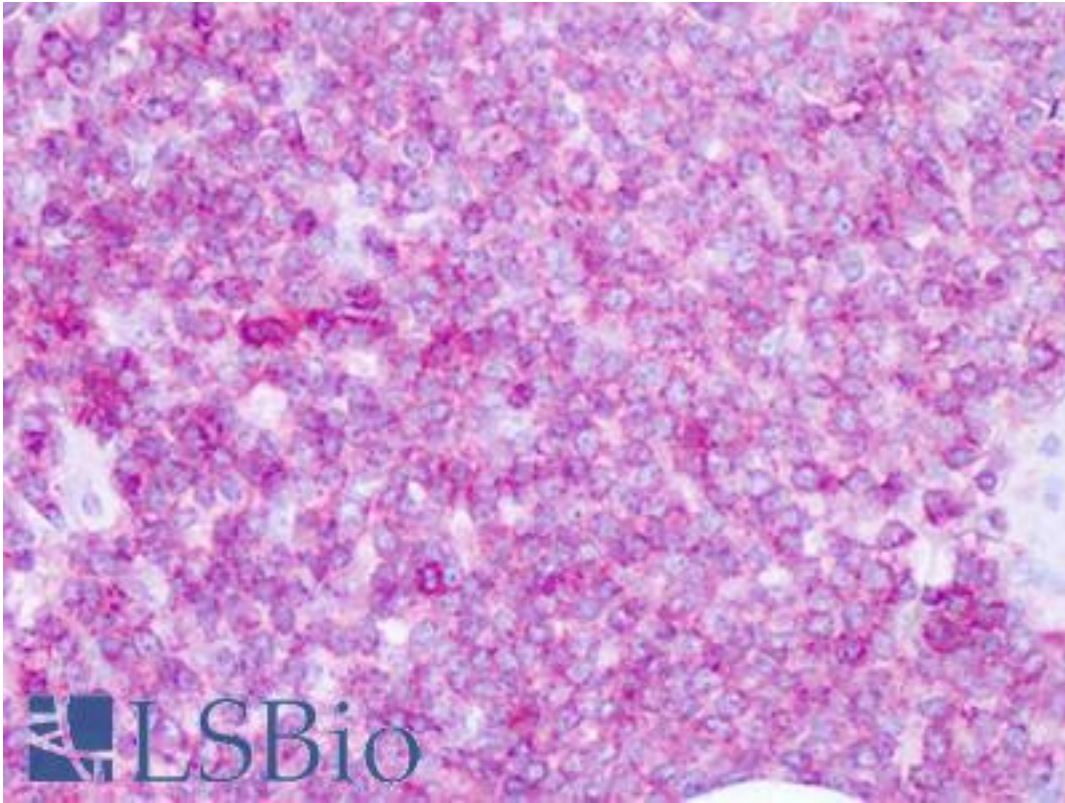


CD45 Rabbit anti-Human Polyclonal (Internal) Antibody - LS-A9435 - LSBio

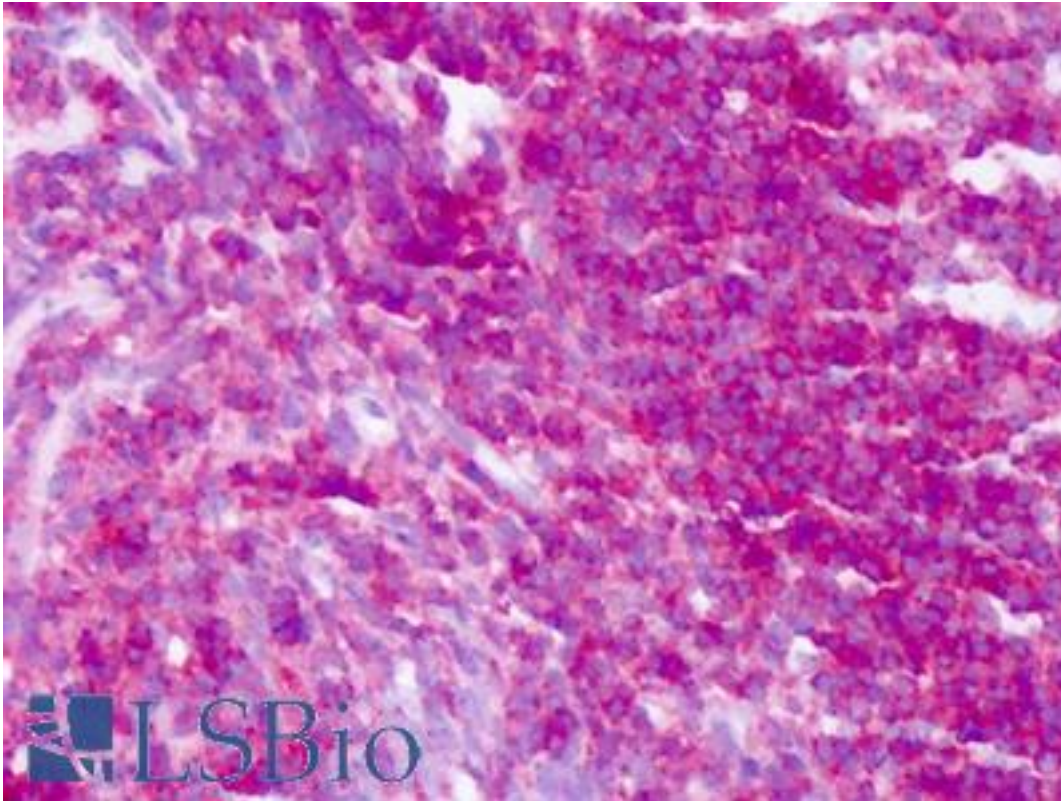
CatalogID:	LS-A9435
Target:	protein tyrosine phosphatase, receptor type, C (PTPRC)
Synonyms:	PTPRC Antibody, B220 Antibody, CD45R Antibody, CD45 Antibody, gp180 Antibody, Leukocyte common antigen Antibody, L-CA Antibody, Leucocyte common antigen Antibody, LY5 Antibody, T200 Antibody, T200 glycoprotein Antibody, T200 leukocyte common antigen Antibody, CD45 antigen Antibody, LCA Antibody
Family / Subfamily:	Protein Phosphatase / R1/R6
Host	PTPRC antibody was produced in Rabbit
Clonality:	Polyclonal
Immunogen Species:	CD45 antibody was raised against Human
Antigen Type:	Synthetic peptide
Immunogen:	CD45 antibody was raised against synthetic 16 amino acid peptide from internal region of human CD45. Percent identity with other species by BLAST analysis: Human, Gorilla (100%); Gibbon (88%).
Specificity:	Human CD45. BLAST analysis of the peptide immunogen showed no homology with other human proteins.
Epitope:	Internal
Reactivity:	Human, Gorilla
Purification:	Immunoaffinity purified
Presentation:	PBS, 0.1% sodium azide.
Recommended Storage:	Long term: -70°C; Short term: +4°C
Usage Summary:	Immunohistochemistry: LS-A9435 was validated for use in immunohistochemistry on a panel of 21 formalin-fixed, paraffin-embedded (FFPE) human tissues after heat induced antigen retrieval in pH 6.0 citrate buffer. After incubation with the primary antibody, slides were incubated with biotinylated secondary antibody, followed by alkaline phosphatase-streptavidin and chromogen. The stained slides were evaluated by a pathologist to confirm staining specificity. The optimal working concentration for LS-A9435 was determined to be 2.5-5 ug/ml.
Uses:	IHC - Paraffin (2.5 - 5 µg/ml) (Optimal dilution to be determined by the researcher)
Size:	50 µg
Concentration:	1 mg/ml

Immunohistochemistry Image:



Anti-CD45 antibody IHC of human spleen. Immunohistochemistry of formalin-fixed, paraffin-embedded tissue after heat-induced antigen retrieval. Antibody LS-A9435 dilution 2.5-5 ug/ml.

Immunohistochemistry Image:



Anti-CD45 antibody IHC of human tonsil. Immunohistochemistry of formalin-fixed, paraffin-embedded tissue after heat-induced antigen retrieval. Antibody LS-A9435 dilution 2.5-5 ug/ml.

Requested From:

Japan

Laboratory Reagent For In Vitro Research Use Only

Not for resale without prior written consent from LifeSpan BioSciences, Inc.

Created on 9/23/2014

© 2014 LifeSpan BioSciences