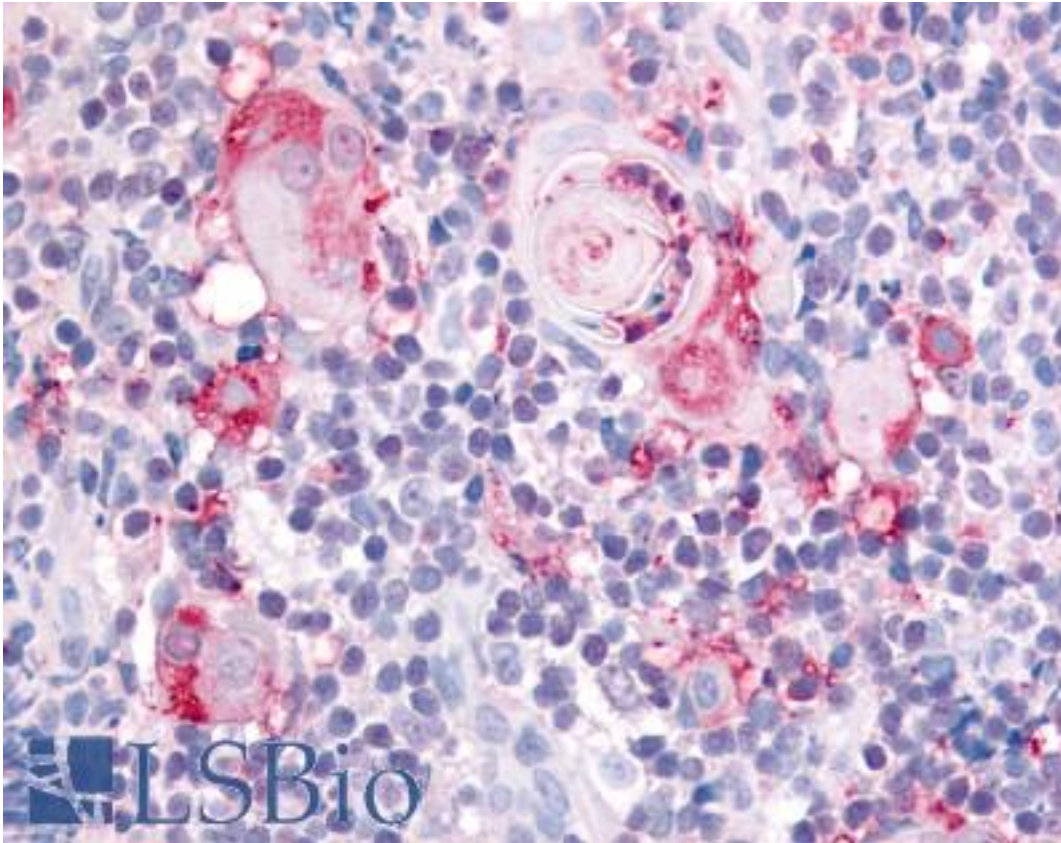


ITGA2 / CD49b Rabbit anti-Human Polyclonal (Extracellular Domain) Antibody - LS-A9428 - LSBio	
CatalogID:	LS-A9428
Target:	integrin, alpha 2 (CD49B, alpha 2 subunit of VLA-2 receptor) (ITGA2)
Synonyms:	ITGA2 Antibody, Alpha2 integrin Antibody, BR Antibody, CD49b antigen Antibody, CD49B Antibody, Integrin alpha2 Antibody, Integrin Alpha 2 Antibody, Integrin alpha-2 Antibody, HPA-5 Antibody, VLA-2 Antibody, VLAA2 Antibody, VLA-2 subunit alpha Antibody, Collagen receptor Antibody, GPIa Antibody, Platelet antigen Br Antibody, Platelet glycoprotein GPIa Antibody, VLA2 receptor, alpha-2 subunit Antibody
Family / Subfamily:	Integrin / not assigned-Integrin
Host	ITGA2 antibody was produced in Rabbit
Clonality:	Polyclonal
Immunogen Species:	ITGA2 / CD49b antibody was raised against Human
Antigen Type:	Synthetic peptide
Immunogen:	ITGA2 / CD49b antibody was raised against synthetic 16 amino acid peptide from extracellular domain of human ITGA2 / CD49b. Percent identity with other species by BLAST analysis: Human, Gorilla, Gibbon, Monkey, Marmoset, Dog, Panda, Pig (100%); Bovine, Elephant, Horse, Chicken, Lizard (94%); Opossum, Turkey (88%); Bat, Hamster, Stickleback (81%).
Specificity:	Human ITGA2 / CD49b. BLAST analysis of the peptide immunogen showed no homology with other human proteins.
Epitope:	Extracellular Domain
Reactivity:	Human, Gorilla, Gibbon, Monkey, Dog, Pig
Predicted Reactivity:	Bovine, Horse, Chicken
Purification:	Immunoaffinity purified
Presentation:	PBS, 0.1% sodium azide.
Recommended Storage:	Long term: -70°C; Short term: +4°C
Usage Summary:	Immunohistochemistry: LS-A9428 was validated for use in immunohistochemistry on a panel of 21 formalin-fixed, paraffin-embedded (FFPE) human tissues after heat induced antigen retrieval in pH 6.0 citrate buffer. After incubation with the primary antibody, slides were incubated with biotinylated secondary antibody, followed by alkaline phosphatase-streptavidin and chromogen. The stained slides were evaluated by a pathologist to confirm staining specificity. The optimal working concentration for LS-A9428 was determined to be 10 ug/ml.
Uses:	IHC - Paraffin (10 µg/ml) (Optimal dilution to be determined by the researcher)
Size:	50 µg
Concentration:	0.7 mg/ml

Immunohistochemistry Image:



Anti-ITGA2 / CD49b antibody LS-A9428 IHC of human thymus, medulla.
Immunohistochemistry of formalin-fixed, paraffin-embedded tissue after heat-induced antigen retrieval.

Requested From:

Japan

Laboratory Reagent For In Vitro Research Use Only

Not for resale without prior written consent from LifeSpan BioSciences, Inc.

Created on 9/23/2014

© 2014 LifeSpan BioSciences