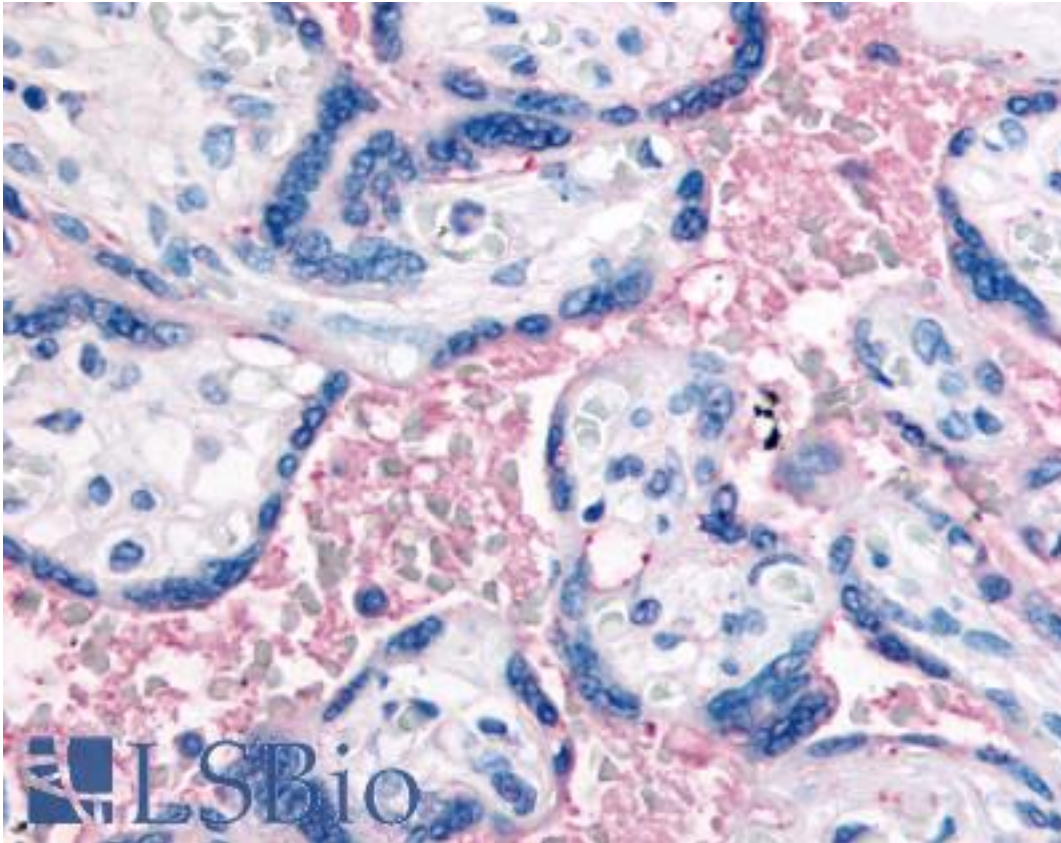


ITGB3 / Integrin Beta 3 / CD61 Rabbit anti-Human Polyclonal (N-Terminus) Antibody - LS-A9416 - LSBio	
CatalogID:	LS-A9416
Target:	integrin, beta 3 (platelet glycoprotein IIIa, antigen CD61) (ITGB3)
Synonyms:	ITGB3 Antibody, BDPLT2 Antibody, CD61 antigen Antibody, GT Antibody, gp3A Antibody, CD61 Antibody, GPIIIa Antibody, Integrin beta-3 Antibody
Family / Subfamily:	Integrin / not assigned-Integrin
Host	ITGB3 antibody was produced in Rabbit
Clonality:	Polyclonal
Immunogen Species:	ITGB3 / Integrin Beta 3 / CD61 antibody was raised against Human
Antigen Type:	Synthetic peptide
Immunogen:	ITGB3 / Integrin Beta 3 / CD61 antibody was raised against synthetic 19 amino acid peptide from N-terminus of human CD61. Percent identity with other species by BLAST analysis: Human, Gorilla, Gibbon, Monkey (100%); Marmoset (95%); Hamster, Panda (89%); Mouse, Rabbit (84%).
Specificity:	Human CD61. BLAST analysis of the peptide immunogen showed no homology with other human proteins.
Epitope:	N-Terminus
Reactivity:	Human, Gorilla, Gibbon
Predicted Reactivity:	Monkey
Purification:	Immunoaffinity purified
Presentation:	PBS, 0.1% sodium azide.
Recommended Storage:	Long term: -70°C; Short term: +4°C
Usage Summary:	Immunohistochemistry: LS-A9416 was validated for use in immunohistochemistry on a panel of 21 formalin-fixed, paraffin-embedded (FFPE) human tissues after heat induced antigen retrieval in pH 6.0 citrate buffer. After incubation with the primary antibody, slides were incubated with biotinylated secondary antibody, followed by alkaline phosphatase-streptavidin and chromogen. The stained slides were evaluated by a pathologist to confirm staining specificity. The optimal working concentration for LS-A9416 was determined to be 10-20 ug/ml.
Uses:	IHC - Paraffin (10 - 20 µg/ml) (Optimal dilution to be determined by the researcher)
Size:	50 µg
Concentration:	0.5 mg/ml

Immunohistochemistry Image:



Anti-CD61 antibody LS-A9416 IHC of human placenta, terminal villi, red blood cells. Immunohistochemistry of formalin-fixed, paraffin-embedded tissue after heat-induced antigen retrieval.

Requested From:

Japan

Laboratory Reagent For In Vitro Research Use Only

Not for resale without prior written consent from LifeSpan BioSciences, Inc.

Created on 9/23/2014

© 2014 LifeSpan BioSciences