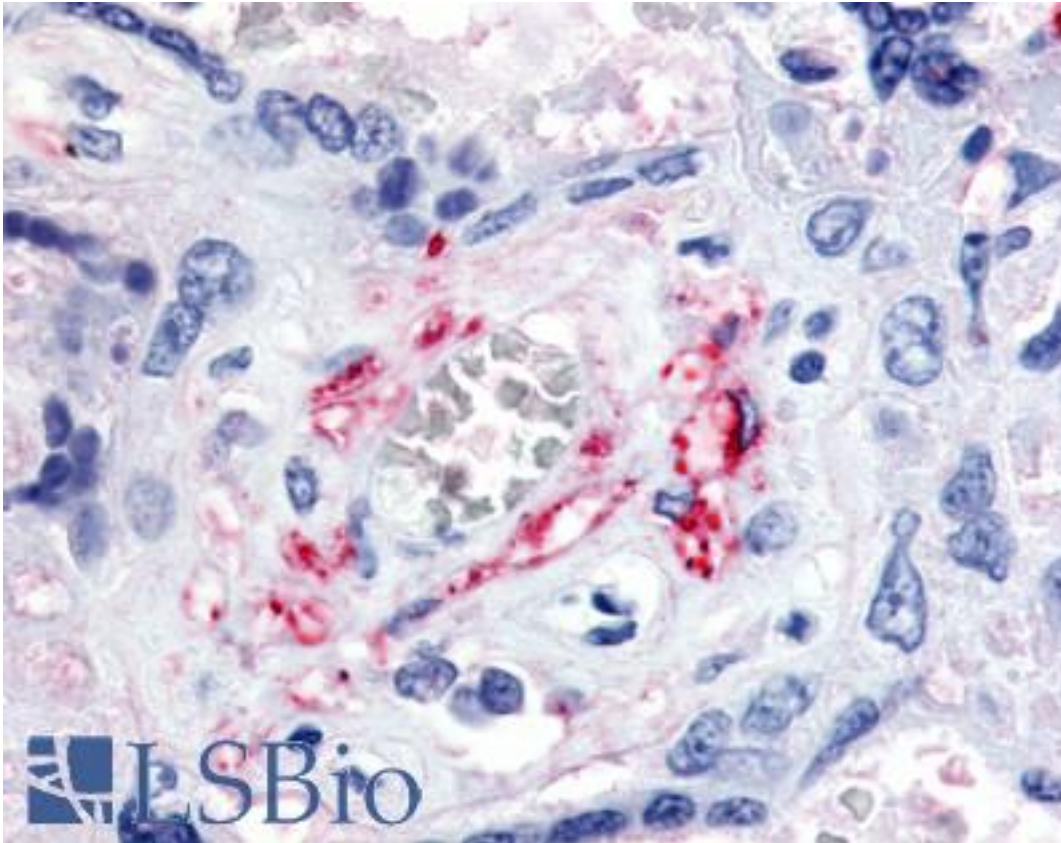


FLKT1 / FLT-1 / VEGFR1 Rabbit anti-Human Polyclonal (N-Terminus) Antibody - LS-A9405 - LSBio	
CatalogID:	LS-A9405
Target:	fms-related tyrosine kinase 1 (FLT1)
Synonyms:	FLT1 Antibody, FLT Antibody, FLT-1 Antibody, Fms-related tyrosine kinase 1 Antibody, SFlt1 Antibody, VEGF-r1 Antibody, VEG-R1 Antibody, Tyrosine-protein kinase FRT Antibody, VEGFR-1 Antibody, Fms-like tyrosine kinase 1 Antibody, FRT Antibody, VEGF receptor 1 Antibody, VEGFf-r1 Antibody, VEGFR1 Antibody
Family / Subfamily:	Protein Kinase / VEGF Receptor
Host	FLT1 antibody was produced in Rabbit
Clonality:	Polyclonal
Immunogen Species:	FLKT1 / FLT-1 / VEGFR1 antibody was raised against Human
Antigen Type:	Synthetic peptide
Immunogen:	FLKT1 / FLT-1 / VEGFR1 antibody was raised against synthetic 15 amino acid peptide from N-terminus of human VEGFR1. Percent identity with other species by BLAST analysis: Human, Gorilla, Gibbon (100%); Monkey, Marmoset, Dog, Panda, Horse, Opossum (93%); Mouse, Rat, Platypus (87%); Bovine, Elephant, Rabbit (80%).
Specificity:	Human VEGFR1. BLAST analysis of the peptide immunogen showed no homology with other human proteins.
Epitope:	N-Terminus
Reactivity:	Human, Gorilla, Gibbon
Predicted Reactivity:	Monkey, Dog, Horse
Purification:	Immunoaffinity purified
Presentation:	PBS, 0.1% sodium azide.
Recommended Storage:	Long term: -70°C; Short term: +4°C
Usage Summary:	Immunohistochemistry: LS-A9405 was validated for use in immunohistochemistry on a panel of 21 formalin-fixed, paraffin-embedded (FFPE) human tissues after heat induced antigen retrieval in pH 6.0 citrate buffer. After incubation with the primary antibody, slides were incubated with biotinylated secondary antibody, followed by alkaline phosphatase-streptavidin and chromogen. The stained slides were evaluated by a pathologist to confirm staining specificity. The optimal working concentration for LS-A9405 was determined to be 5-10 ug/ml.
Uses:	IHC - Paraffin (5 - 10 µg/ml) (Optimal dilution to be determined by the researcher)
Size:	50 µg
Concentration:	0.14 mg/ml

Immunohistochemistry Image:



Anti-VEGFR1 antibody LS-A9405 IHC of human placenta, fetal capillary endothelial cells. Immunohistochemistry of formalin-fixed, paraffin-embedded tissue after heat-induced antigen retrieval.

Requested From:

Japan

Laboratory Reagent For In Vitro Research Use Only

Not for resale without prior written consent from LifeSpan BioSciences, Inc.

Created on 9/23/2014

© 2014 LifeSpan BioSciences