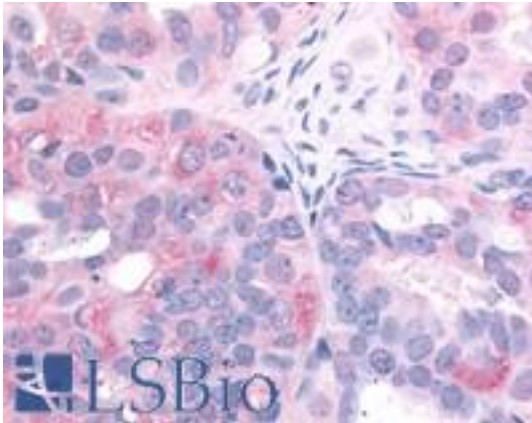


EGFR Rabbit anti-Human Polyclonal (C-Terminus) Antibody - LS-A9400 - LSBio

CatalogID:	LS-A9400
Target:	epidermal growth factor receptor (EGFR)
Synonyms:	EGFR Antibody, EGFR receptor Antibody, ERBB Antibody, ERBB1 Antibody, MENA Antibody, Panitumumab Antibody, PIG61 Antibody, Proto-oncogene c-ErbB-1 Antibody, V-erb-b homolog Antibody, EGF-R Antibody, HER1 Antibody
Family / Subfamily:	Protein Kinase / EGF Receptor
Host	EGFR antibody was produced in Rabbit
Clonality:	Polyclonal
Immunogen Species:	EGFR antibody was raised against Human
Antigen Type:	Synthetic peptide
Immunogen:	EGFR antibody was raised against synthetic 16 amino acid peptide from C-terminus of human EGFR. Percent identity with other species by BLAST analysis: Human, Gorilla, Gibbon (100%); Marmoset, Rat (94%); Mouse (88%); Bovine, Dog, Hamster, Elephant, Horse (81%).
Specificity:	Human EGFR. BLAST analysis of the peptide immunogen showed no homology with other human proteins.
Epitope:	C-Terminus
Reactivity:	Human, Gorilla, Gibbon
Predicted Reactivity:	Monkey, Rat
Purification:	Immunoaffinity purified
Presentation:	PBS, 0.1% sodium azide.
Recommended Storage:	Long term: -70°C; Short term: +4°C
Usage Summary:	Immunohistochemistry: LS-A9400 was validated for use in immunohistochemistry on a panel of 21 formalin-fixed, paraffin-embedded (FFPE) human tissues after heat induced antigen retrieval in pH 6.0 citrate buffer. After incubation with the primary antibody, slides were incubated with biotinylated secondary antibody, followed by alkaline phosphatase-streptavidin and chromogen. The stained slides were evaluated by a pathologist to confirm staining specificity. The optimal working concentration for LS-A9400 was determined to be 2.5 ug/ml.
Uses:	IHC - Paraffin (2.5 µg/ml) (Optimal dilution to be determined by the researcher)
Size:	50 µg
Concentration:	0.8 mg/ml

Immunohistochemistry Image:



Anti-EGFR antibody LS-A9400 IHC of human ovarian carcinoma. Immunohistochemistry of formalin-fixed, paraffin-embedded tissue after heat-induced antigen retrieval.

Requested From:

Japan

Laboratory Reagent For In Vitro Research Use Only

Not for resale without prior written consent from LifeSpan BioSciences, Inc.

Created on 9/23/2014

© 2014 LifeSpan BioSciences