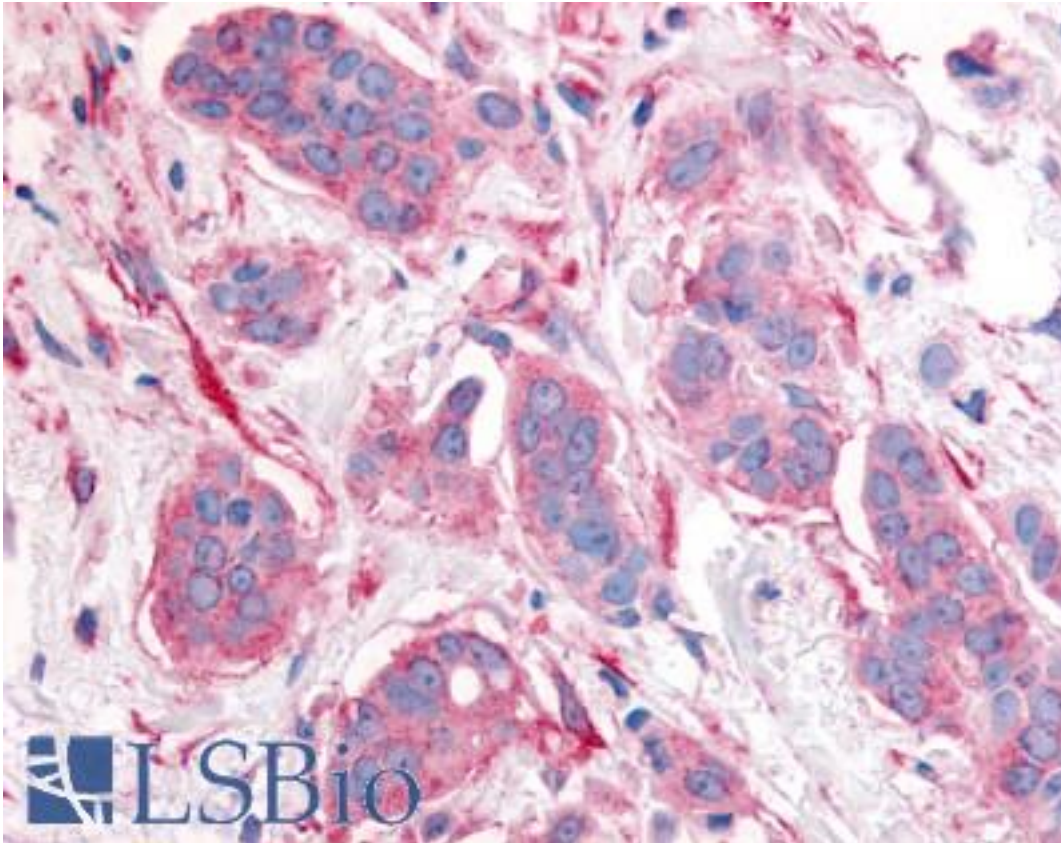


ERBB2 / HER2 Rabbit anti-Human Polyclonal (Cytoplasmic Domain) Antibody - LS-A9398 - LSBio	
CatalogID:	LS-A9398
Target:	v-erb-b2 avian erythroblastic leukemia viral oncogene homolog 2 (ERBB2)
Synonyms:	ERBB2 Antibody, C-erb B2/neu protein Antibody, CD340 Antibody, HER2 Antibody, Herstatin Antibody, MLN 19 Antibody, HER-2 Antibody, Neu Antibody, NGL Antibody, Proto-oncogene c-ErbB-2 Antibody, Proto-oncogene Neu Antibody, CD340 antigen Antibody, MLN19 Antibody, p185erbB2 Antibody, TKR1 Antibody
Family / Subfamily:	Protein Kinase / EGF Receptor
Host	ERBB2 antibody was produced in Rabbit
Clonality:	Polyclonal
Immunogen Species:	ERBB2 / HER2 antibody was raised against Human
Antigen Type:	Synthetic peptide
Immunogen:	ERBB2 / HER2 antibody was raised against synthetic 17 amino acid peptide from cytoplasmic domain of human ERBB2 / HER2. Percent identity with other species by BLAST analysis: Human, Gorilla, Gibbon, Monkey, Marmoset, Mouse, Rat, Bovine, Hamster, Horse (100%); Elephant, Pig (94%); Bat (88%).
Specificity:	Human ERBB2 / HER2. BLAST analysis of the peptide immunogen showed no homology with other human proteins.
Epitope:	Cytoplasmic Domain
Reactivity:	Human, Gorilla, Gibbon, Monkey, Mouse, Rat, Bovine, Hamster, Horse
Predicted Reactivity:	Pig
Purification:	Immunoaffinity purified
Presentation:	PBS, 0.1% sodium azide.
Recommended Storage:	Long term: -70°C; Short term: +4°C
Usage Summary:	Immunohistochemistry: LS-A9398 was validated for use in immunohistochemistry on a panel of 21 formalin-fixed, paraffin-embedded (FFPE) human tissues after heat induced antigen retrieval in pH 6.0 citrate buffer. After incubation with the primary antibody, slides were incubated with biotinylated secondary antibody, followed by alkaline phosphatase-streptavidin and chromogen. The stained slides were evaluated by a pathologist to confirm staining specificity. The optimal working concentration for LS-A9398 was determined to be 10 ug/ml.
Uses:	IHC - Paraffin (10 µg/ml) (Optimal dilution to be determined by the researcher)
Size:	50 µg
Concentration:	1 mg/ml

Immunohistochemistry Image:



Anti-ERBB2 / HER2 antibody LS-A9398 IHC of human breast carcinoma, neoplastic cells. Immunohistochemistry of formalin-fixed, paraffin-embedded tissue after heat-induced antigen retrieval.

Requested From:

Japan

Laboratory Reagent For In Vitro Research Use Only

Not for resale without prior written consent from LifeSpan BioSciences, Inc.

Created on 9/23/2014

© 2014 LifeSpan BioSciences