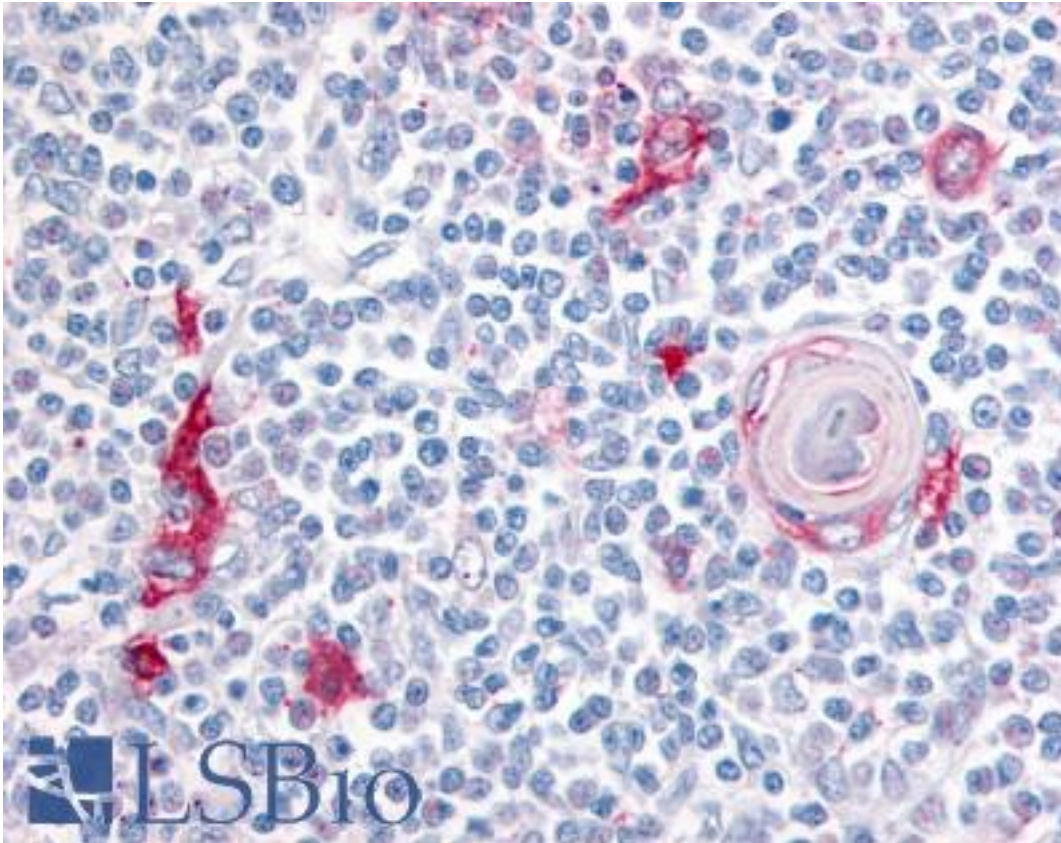


ITGA4 / VLA-4 / CD49d Rabbit anti-Human Polyclonal (C-Terminus) Antibody - LS-A9388 - LSBio	
<b>CatalogID:</b>	LS-A9388
<b>Target:</b>	integrin, alpha 4 (antigen CD49D, alpha 4 subunit of VLA-4 receptor) (ITGA4)
<b>Synonyms:</b>	ITGA4 Antibody, 269C wild type Antibody, CD49D Antibody, IA4 Antibody, Integrin alpha-4 Antibody, Integrin alpha 4 Antibody, Integrin alpha-4 subunit Antibody, Integrin alpha-IV Antibody, VLA-4 Antibody, VLA-4 subunit alpha Antibody, CD49d antigen Antibody
<b>Family / Subfamily:</b>	Integrin / not assigned-Integrin
<b>Host</b>	ITGA4 antibody was produced in Rabbit
<b>Clonality:</b>	Polyclonal
<b>Immunogen Species:</b>	ITGA4 / VLA-4 / CD49d antibody was raised against Human
<b>Antigen Type:</b>	Synthetic peptide
<b>Immunogen:</b>	ITGA4 / VLA-4 / CD49d antibody was raised against synthetic 18 amino acid peptide from C-terminus of human ITGA4 / Integrin Alpha 4. Percent identity with other species by BLAST analysis: Human, Gorilla, Gibbon, Monkey, Mouse, Rat, Dog, Bat, Hamster, Panda, Rabbit, Pig (100%); Bovine, Elephant, Horse, Opossum, Platypus (94%).
<b>Specificity:</b>	Human ITGA4 / Integrin Alpha 4. BLAST analysis of the peptide immunogen showed no homology with other human proteins.
<b>Epitope:</b>	C-Terminus
<b>Reactivity:</b>	Human, Gorilla, Gibbon, Monkey, Mouse, Rat, Bat, Dog, Hamster, Pig, Rabbit
<b>Predicted Reactivity:</b>	Bovine, Horse
<b>Purification:</b>	Immunoaffinity purified
<b>Presentation:</b>	PBS, 0.1% sodium azide.
<b>Recommended Storage:</b>	Long term: -70°C; Short term: +4°C
<b>Usage Summary:</b>	Immunohistochemistry: LS-A9388 was validated for use in immunohistochemistry on a panel of 21 formalin-fixed, paraffin-embedded (FFPE) human tissues after heat induced antigen retrieval in pH 6.0 citrate buffer. After incubation with the primary antibody, slides were incubated with biotinylated secondary antibody, followed by alkaline phosphatase-streptavidin and chromogen. The stained slides were evaluated by a pathologist to confirm staining specificity. The optimal working concentration for LS-A9388 was determined to be 20 ug/ml.
<b>Uses:</b>	IHC - Paraffin (20 µg/ml) (Optimal dilution to be determined by the researcher)
<b>Size:</b>	50 µg
<b>Concentration:</b>	1 mg/ml

**Immunohistochemistry Image:**



Anti-ITGA4 / Integrin Alpha 4 antibody LS-A9388 IHC of human thymus, medulla.  
Immunohistochemistry of formalin-fixed, paraffin-embedded tissue after heat-induced antigen retrieval.

**Requested From:**

Japan

Laboratory Reagent For In Vitro Research Use Only

Not for resale without prior written consent from LifeSpan BioSciences, Inc.

Created on 9/23/2014

© 2014 LifeSpan BioSciences