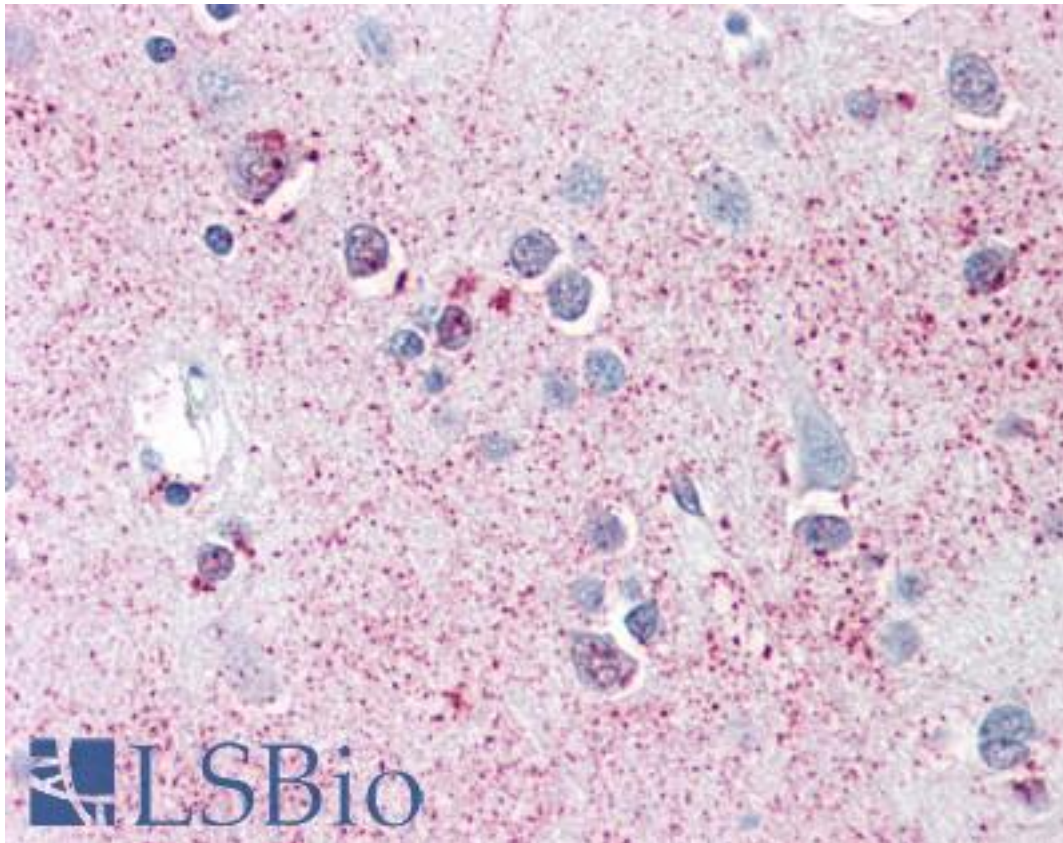


SRPX2 Rabbit anti-Human Polyclonal (C-Terminus) Antibody - LS-A9378 - LSBio

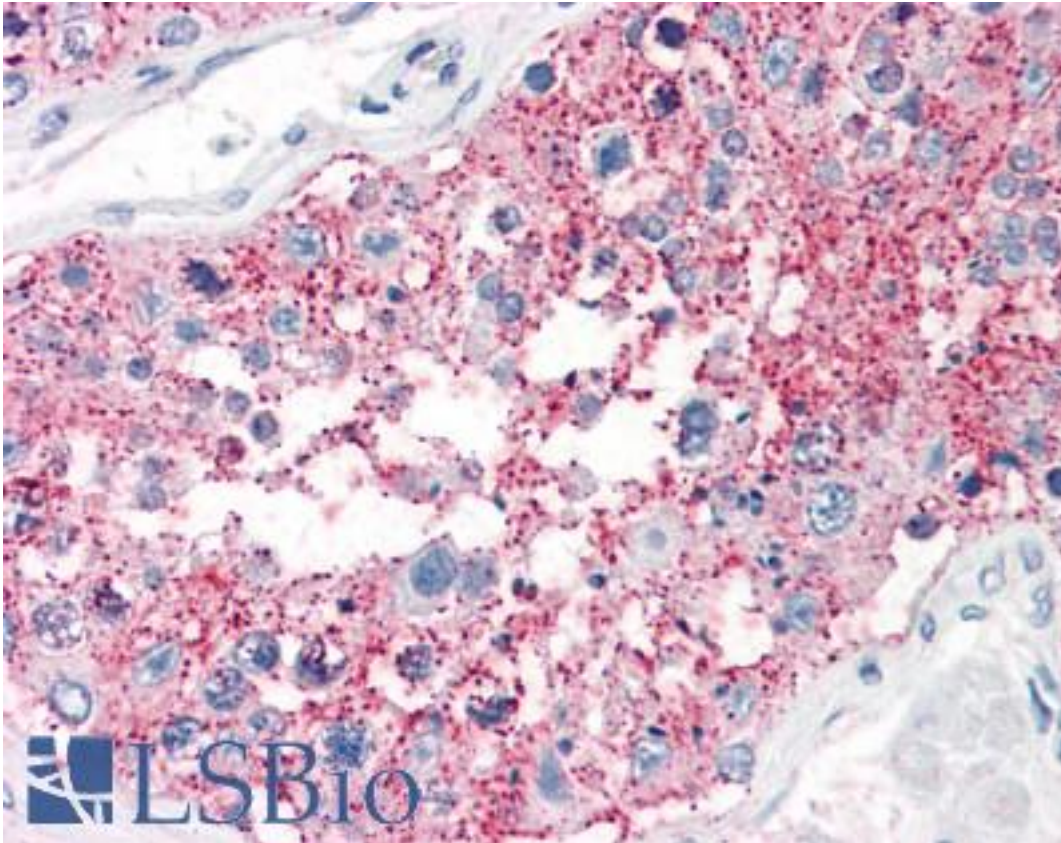
CatalogID:	LS-A9378
Target:	sushi-repeat containing protein, X-linked 2 (SRPX2)
Synonyms:	SRPX2 Antibody, BPP Antibody, CBPS Antibody, PMGX Antibody, RESDX Antibody, SRPUL Antibody
Host	SRPX2 antibody was produced in Rabbit
Clonality:	Polyclonal
Immunogen Species:	SRPX2 antibody was raised against Human
Antigen Type:	Synthetic peptide
Immunogen:	SRPX2 antibody was raised against synthetic 13 amino acid peptide from C-Terminus of human SRPX2. Percent identity with other species by BLAST analysis: Human, Chimpanzee, Gorilla, Orangutan, Monkey, Bat, Rabbit (100%); Galago, Marmoset, Elephant, Panda, Dog, Horse, Pig (92%); Bovine (85%).
Specificity:	Human SRPX2. BLAST analysis of the peptide immunogen showed no homology with other human proteins.
Epitope:	C-Terminus
Reactivity:	Human, Chimpanzee, Gorilla, Orangutan, Bat, Rabbit
Predicted Reactivity:	Monkey, Dog, Horse, Pig
Purification:	Immunoaffinity purified
Presentation:	PBS, 0.1% sodium azide.
Recommended Storage:	Long term: -70°C; Short term: +4°C
Uses:	IHC - Paraffin (15 - 20 µg/ml) (Optimal dilution to be determined by the researcher)
Size:	50 µg
Concentration:	0.4 mg/ml

Immunohistochemistry Image:



Anti-SRPX2 antibody LS-A9378 IHC of human brain, cortex. Immunohistochemistry of formalin-fixed, paraffin-embedded tissue after heat-induced antigen retrieval.

Immunohistochemistry Image:



Anti-SRPX2 antibody LS-A9378 IHC of human testis. Immunohistochemistry of formalin-fixed, paraffin-embedded tissue after heat-induced antigen retrieval.

Requested From:

Japan

Laboratory Reagent For In Vitro Research Use Only

Not for resale without prior written consent from LifeSpan BioSciences, Inc.

Created on 9/23/2014

© 2014 LifeSpan BioSciences