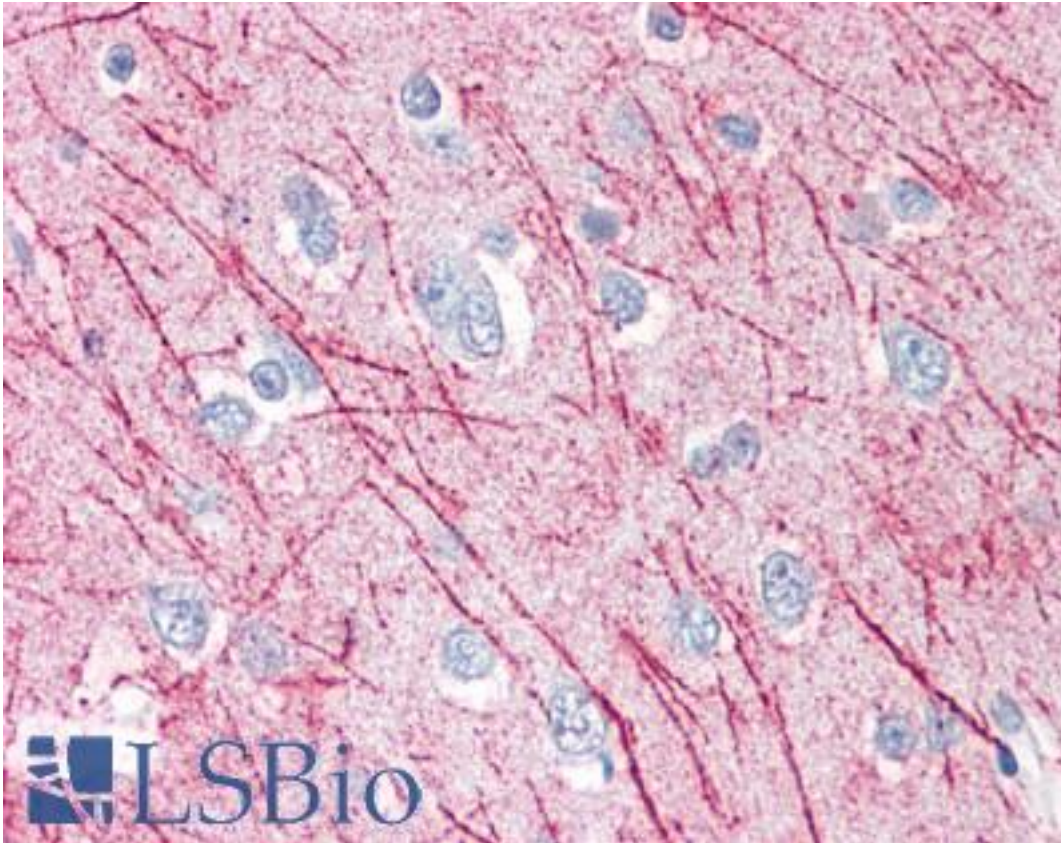


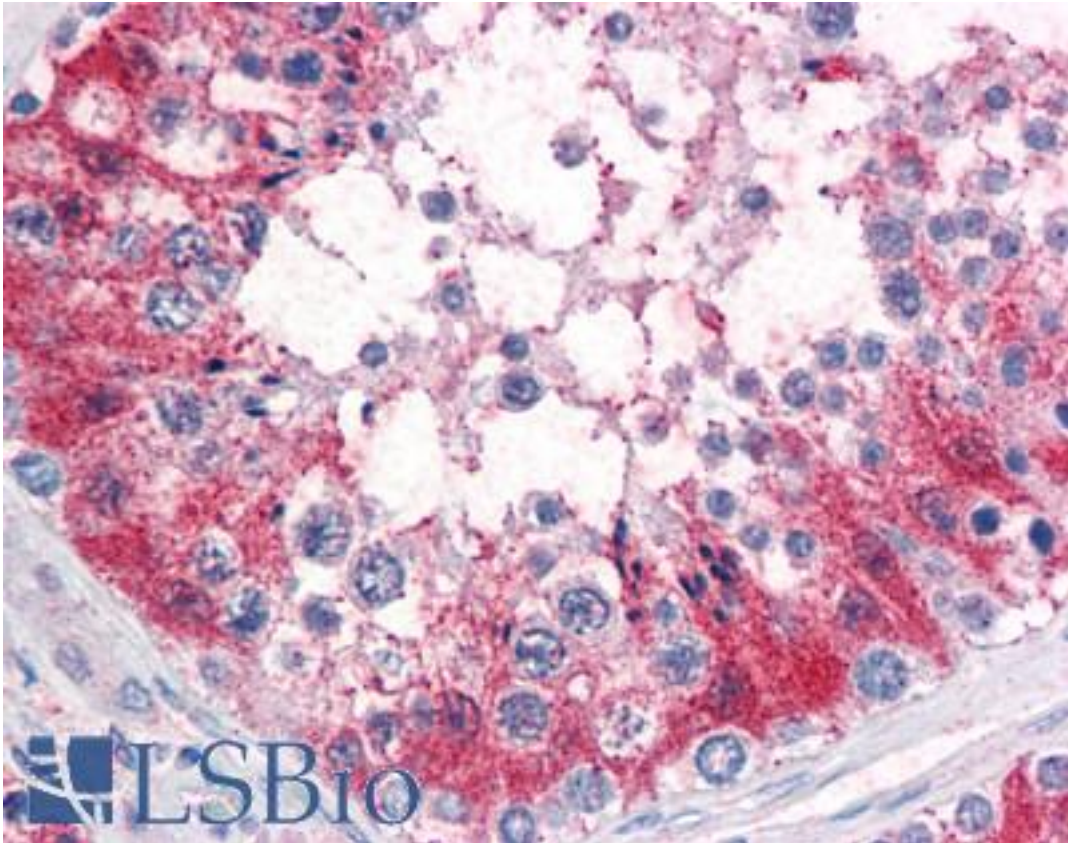
SRPX2 Rabbit anti-Human Polyclonal (Internal) Antibody - LS-A9375 - LSBio	
<b>CatalogID:</b>	LS-A9375
<b>Target:</b>	sushi-repeat containing protein, X-linked 2 (SRPX2)
<b>Synonyms:</b>	SRPX2 Antibody, BPP Antibody, CBPS Antibody, PMGX Antibody, RESDX Antibody, SRPUL Antibody
<b>Host</b>	SRPX2 antibody was produced in Rabbit
<b>Clonality:</b>	Polyclonal
<b>Immunogen Species:</b>	SRPX2 antibody was raised against Human
<b>Antigen Type:</b>	Synthetic peptide
<b>Immunogen:</b>	SRPX2 antibody was raised against synthetic 16 amino acid peptide from internal region of human SRPX2. Percent identity with other species by BLAST analysis: Human, Chimpanzee, Gorilla, Orangutan, Gibbon, Monkey, Galago, Marmoset, Mouse, Elephant, Dog, Bat, Bovine, Horse, Rabbit, Pig, Opossum, Guinea pig (100%); Rat, Panda, Platypus (94%); Xenopus (81%).
<b>Specificity:</b>	Human SRPX2. BLAST analysis of the peptide immunogen showed no homology with other human proteins.
<b>Epitope:</b>	Internal
<b>Reactivity:</b>	Human, Chimpanzee, Gorilla, Orangutan, Gibbon, Monkey, Mouse, Bat, Bovine, Dog, Guinea pig, Horse, Pig, Rabbit
<b>Predicted Reactivity:</b>	Rat
<b>Purification:</b>	Immunoaffinity purified
<b>Presentation:</b>	PBS, 0.1% sodium azide.
<b>Recommended Storage:</b>	Long term: -70°C; Short term: +4°C
<b>Uses:</b>	IHC - Paraffin (10 - 15 µg/ml) (Optimal dilution to be determined by the researcher)
<b>Size:</b>	50 µg
<b>Concentration:</b>	0.5 mg/ml

**Immunohistochemistry Image:**



Anti-SRPX2 antibody LS-A9375 IHC of human brain, cortex. Immunohistochemistry of formalin-fixed, paraffin-embedded tissue after heat-induced antigen retrieval.

**Immunohistochemistry Image:**



Anti-SRPX2 antibody LS-A9375 IHC of human testis. Immunohistochemistry of formalin-fixed, paraffin-embedded tissue after heat-induced antigen retrieval.

**Requested From:**

Japan

Laboratory Reagent For In Vitro Research Use Only

Not for resale without prior written consent from LifeSpan BioSciences, Inc.

Created on 9/23/2014

© 2014 LifeSpan BioSciences