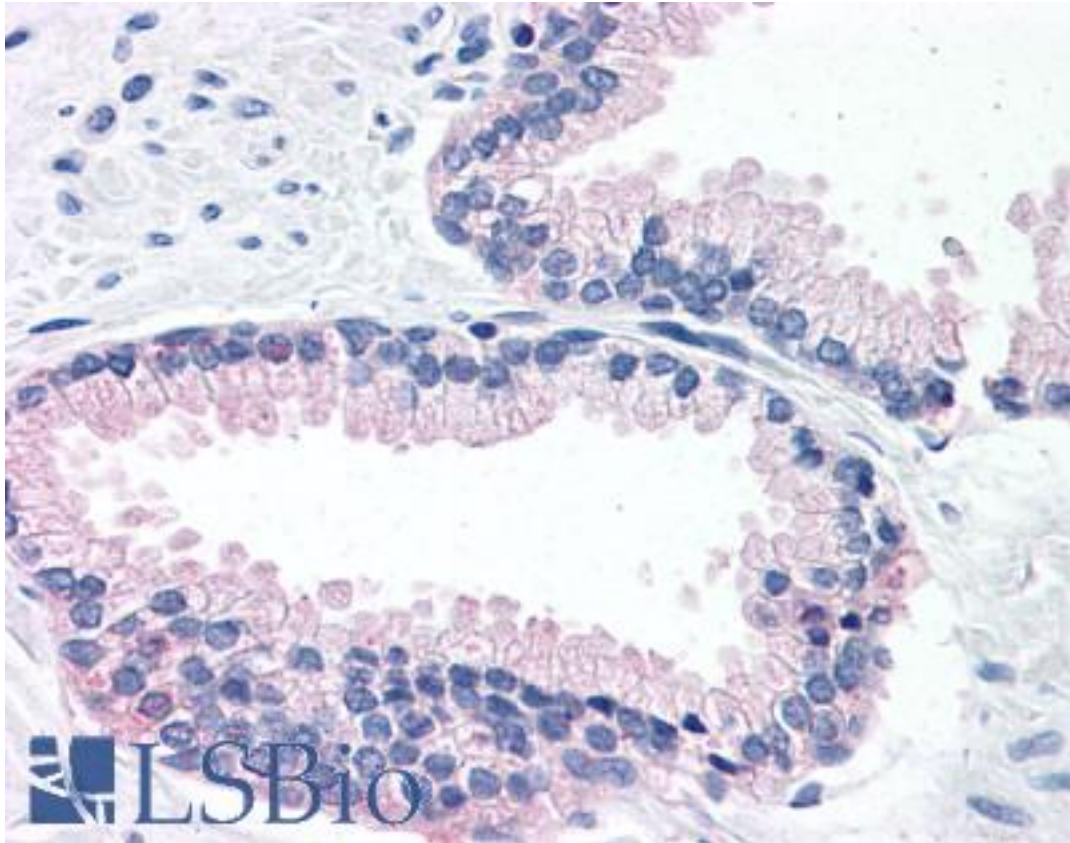


LOXL2 Rabbit anti-Human Polyclonal (N-Terminus) Antibody - LS-A9354 - LSBio

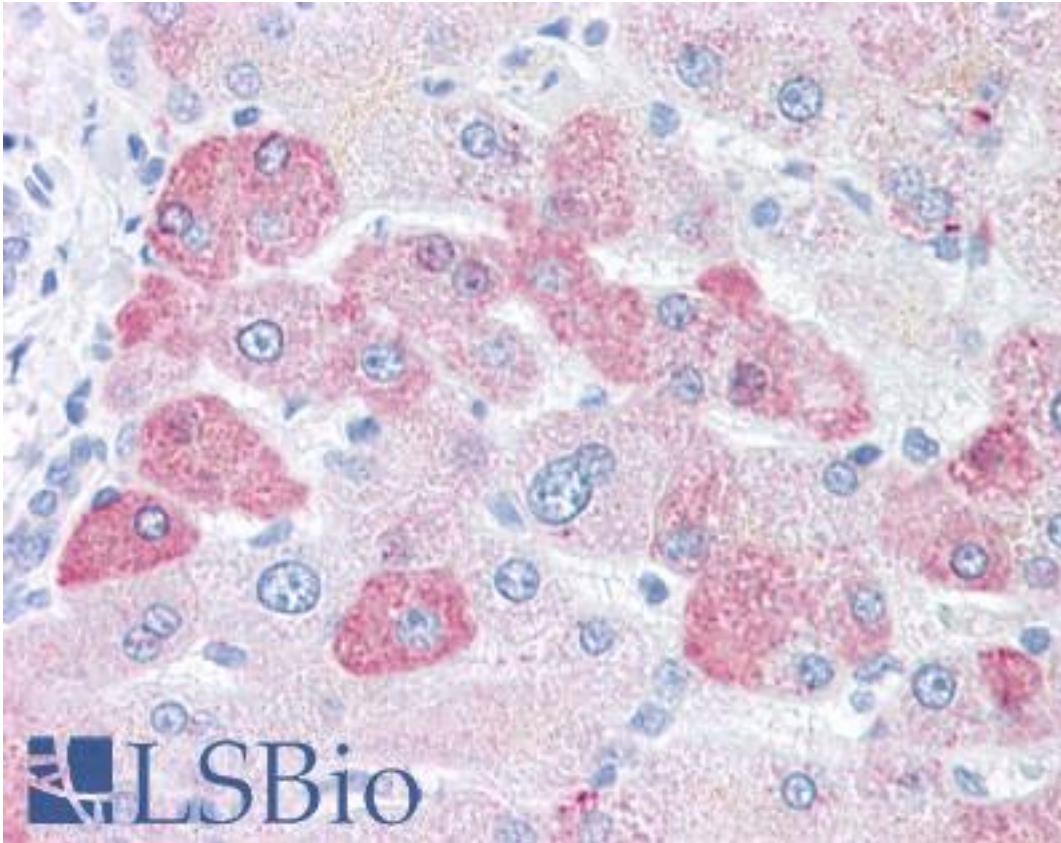
CatalogID:	LS-A9354
Target:	lysyl oxidase-like 2 (LOXL2)
Synonyms:	LOXL2 Antibody, Lysyl oxidase-like protein 2 Antibody, Lysyl oxidase related 2 Antibody, Lysyl oxidase-like 2 Antibody, WS9-14 Antibody, LOR2 Antibody, Lysyl oxidase homolog 2 Antibody
Host	LOXL2 antibody was produced in Rabbit
Clonality:	Polyclonal
Immunogen Species:	LOXL2 antibody was raised against Human
Antigen Type:	Synthetic peptide
Immunogen:	LOXL2 antibody was raised against synthetic 15 amino acid peptide from N-terminus of human LOXL2. Percent identity with other species by BLAST analysis: Human, Gorilla, Orangutan, Monkey, Marmoset, Dog, Bovine, Bat, Elephant, Panda, Horse, Rabbit (100%); Mouse, Rat, Opossum, Turkey, Chicken, Platypus (93%); Xenopus, Pufferfish, Zebrafish, Stickleback (87%).
Specificity:	Human LOXL2. BLAST analysis of the peptide immunogen showed no homology with other human proteins.
Epitope:	N-Terminus
Reactivity:	Human, Gorilla, Orangutan, Monkey, Bat, Bovine, Dog, Horse, Rabbit
Predicted Reactivity:	Mouse, Rat, Chicken
Purification:	Immunoaffinity purified
Presentation:	PBS, 0.1% sodium azide.
Recommended Storage:	Long term: -70°C; Short term: +4°C
Uses:	IHC - Paraffin (15 µg/ml) (Optimal dilution to be determined by the researcher)
Size:	50 µg
Concentration:	1 mg/ml

Immunohistochemistry Image:



Anti-LOXL2 antibody LS-A9354 IHC of human prostate. Immunohistochemistry of formalin-fixed, paraffin-embedded tissue after heat-induced antigen retrieval.

Immunohistochemistry Image:



Anti-LOXL2 antibody LS-A9354 IHC of human liver. Immunohistochemistry of formalin-fixed, paraffin-embedded tissue after heat-induced antigen retrieval.

Requested From:

Japan

Laboratory Reagent For In Vitro Research Use Only

Not for resale without prior written consent from LifeSpan BioSciences, Inc.

Created on 9/23/2014

© 2014 LifeSpan BioSciences