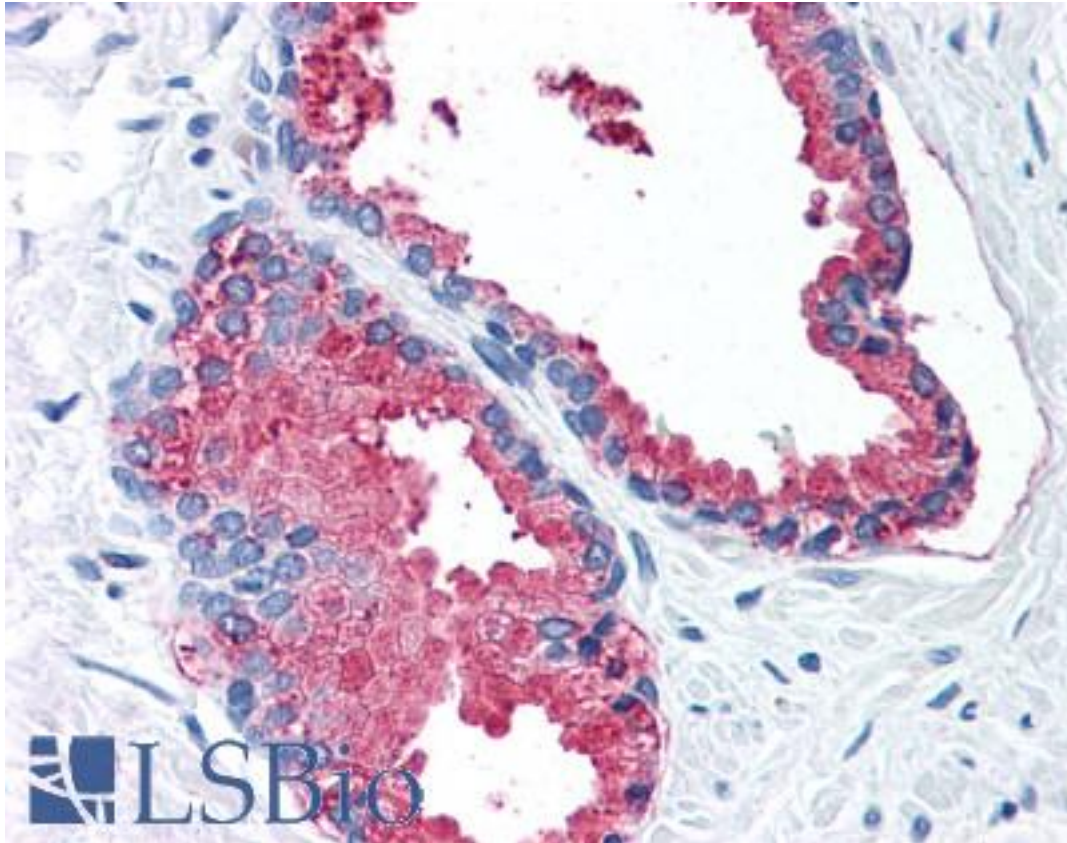


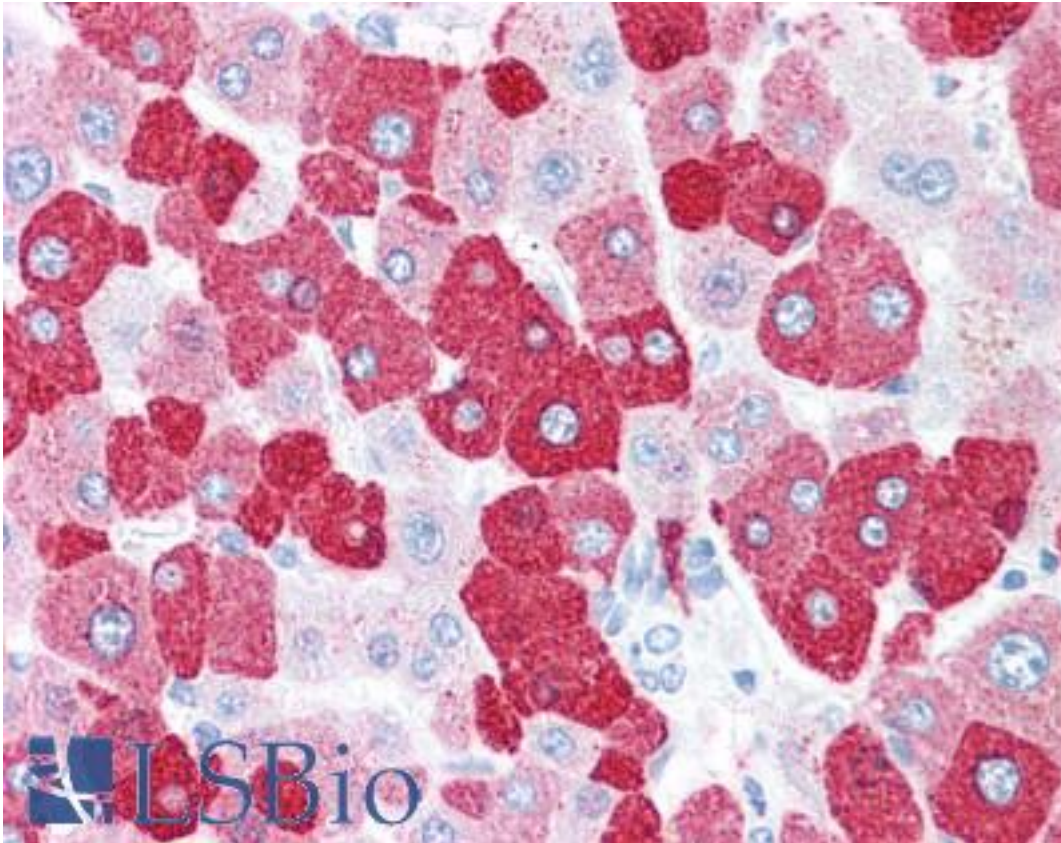
LOXL2 Rabbit anti-Human Polyclonal (Internal) Antibody - LS-A9350 - LSBio	
CatalogID:	LS-A9350
Target:	lysyl oxidase-like 2 (LOXL2)
Synonyms:	LOXL2 Antibody, Lysyl oxidase-like protein 2 Antibody, Lysyl oxidase related 2 Antibody, Lysyl oxidase-like 2 Antibody, WS9-14 Antibody, LOR2 Antibody, Lysyl oxidase homolog 2 Antibody
Host	LOXL2 antibody was produced in Rabbit
Clonality:	Polyclonal
Immunogen Species:	LOXL2 antibody was raised against Human
Antigen Type:	Synthetic peptide
Immunogen:	LOXL2 antibody was raised against synthetic 20 amino acid peptide from internal region of human LOXL2. Percent identity with other species by BLAST analysis: Human, Gorilla, Orangutan, Monkey, Galago, Marmoset, Mouse, Rat, Elephant, Panda, Dog, Bovine, Horse, Rabbit, Guinea pig (100%); Bat (95%).
Specificity:	Human LOXL2. BLAST analysis of the peptide immunogen showed no homology with other human proteins.
Epitope:	Internal
Reactivity:	Human, Gorilla, Orangutan, Monkey, Mouse, Rat, Bovine, Dog, Guinea pig, Horse, Rabbit
Predicted Reactivity:	Bat
Purification:	Immunoaffinity purified
Presentation:	PBS, 0.1% sodium azide.
Recommended Storage:	Long term: -70°C; Short term: +4°C
Uses:	IHC - Paraffin (15 µg/ml) (Optimal dilution to be determined by the researcher)
Size:	50 µg
Concentration:	0.5 mg/ml

Immunohistochemistry Image:



Anti-LOXL2 antibody LS-A9350 IHC of human prostate. Immunohistochemistry of formalin-fixed, paraffin-embedded tissue after heat-induced antigen retrieval.

Immunohistochemistry Image:



Anti-LOXL2 antibody LS-A9350 IHC of human liver. Immunohistochemistry of formalin-fixed, paraffin-embedded tissue after heat-induced antigen retrieval.

Requested From:

Japan

Laboratory Reagent For In Vitro Research Use Only

Not for resale without prior written consent from LifeSpan BioSciences, Inc.

Created on 9/23/2014

© 2014 LifeSpan BioSciences