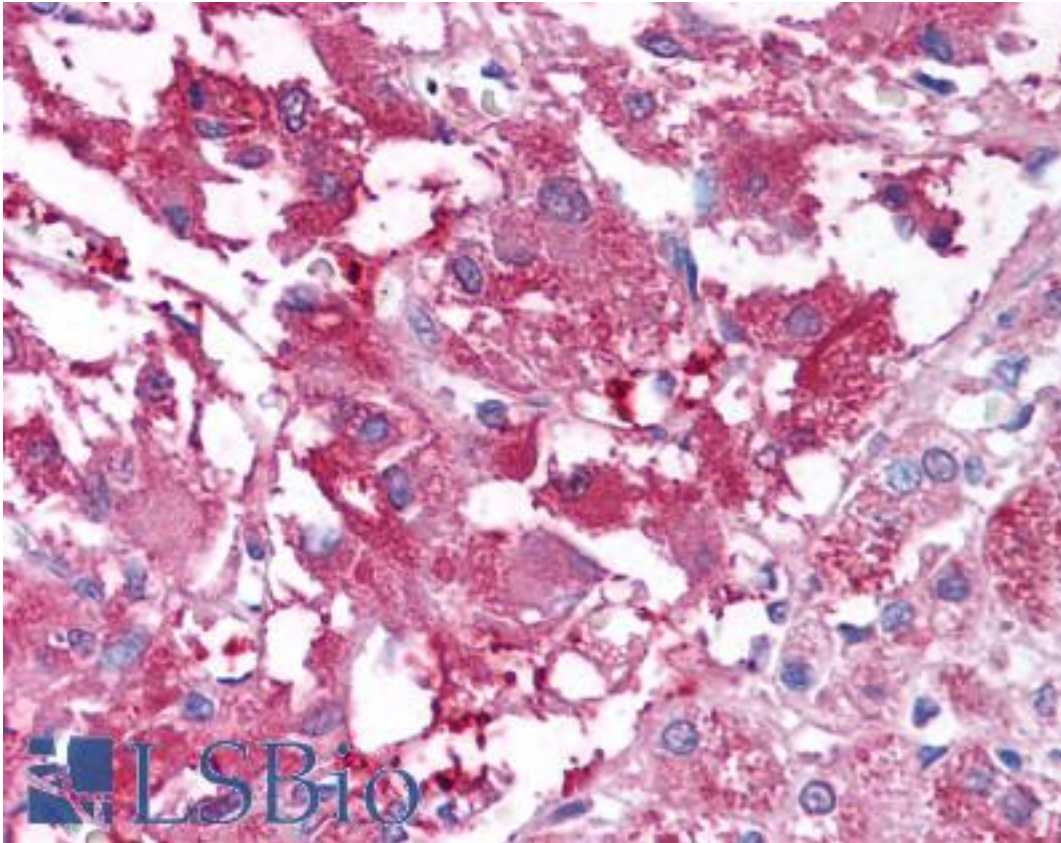


**VDU2 / USP20 Rabbit anti-Human Polyclonal (Internal) Antibody - LS-A9345 - LSBio**

<b>CatalogID:</b>	LS-A9345
<b>Target:</b>	ubiquitin specific peptidase 20 (USP20)
<b>Synonyms:</b>	USP20 Antibody, Deubiquitinating enzyme 20 Antibody, Ubiquitin specific protease 20 Antibody, Ubiquitin thioesterase 20 Antibody, HVDU2 Antibody, KIAA1003 Antibody, LSFR3A Antibody, Ubiquitin thiolesterase 20 Antibody, VDU2 Antibody
<b>Family / Subfamily:</b>	Protease / Cysteine C19
<b>Host</b>	USP20 antibody was produced in Rabbit
<b>Clonality:</b>	Polyclonal
<b>Immunogen Species:</b>	VDU2 / USP20 antibody was raised against Human
<b>Antigen Type:</b>	Synthetic peptide
<b>Immunogen:</b>	VDU2 / USP20 antibody was raised against synthetic 15 amino acid peptide from internal region of human USP20. Percent identity with other species by BLAST analysis: Human, Gorilla, Orangutan, Gibbon, Monkey, Marmoset, Dog, Bat, Bovine, Elephant, Panda, Horse, Rabbit, Pig, Opossum, Turkey, Chicken, Platypus (100%); Mouse, Rat, Hamster (93%); Zebrafish, Stickleback (87%); Pufferfish (80%).
<b>Specificity:</b>	Human USP20. BLAST analysis of the peptide immunogen showed no homology with other human proteins.
<b>Epitope:</b>	Internal
<b>Reactivity:</b>	Human, Gorilla, Orangutan, Gibbon, Monkey, Bat, Bovine, Dog, Horse, Pig, Rabbit, Chicken
<b>Predicted Reactivity:</b>	Mouse, Rat, Hamster
<b>Purification:</b>	Immunoaffinity purified
<b>Presentation:</b>	PBS, 0.1% sodium azide.
<b>Recommended Storage:</b>	Long term: -70°C; Short term: +4°C
<b>Usage Summary:</b>	Immunohistochemistry: LS-A9345 was validated for use in immunohistochemistry on a panel of 21 formalin-fixed, paraffin-embedded (FFPE) human tissues after heat induced antigen retrieval in pH 6.0 citrate buffer. After incubation with the primary antibody, slides were incubated with biotinylated secondary antibody, followed by alkaline phosphatase-streptavidin and chromogen. The stained slides were evaluated by a pathologist to confirm staining specificity. The optimal working concentration for LS-A9345 was determined to be 10 ug/ml.
<b>Uses:</b>	IHC - Paraffin (10 µg/ml) (Optimal dilution to be determined by the researcher)
<b>Size:</b>	50 µg
<b>Concentration:</b>	0.6 mg/ml

**Immunohistochemistry Image:**



Anti-USP20 antibody LS-A9345 IHC of human adrenal medulla. Immunohistochemistry of formalin-fixed, paraffin-embedded tissue after heat-induced antigen retrieval.

**Requested From:**

Japan

Laboratory Reagent For In Vitro Research Use Only

Not for resale without prior written consent from LifeSpan BioSciences, Inc.

Created on 9/23/2014

© 2014 LifeSpan BioSciences