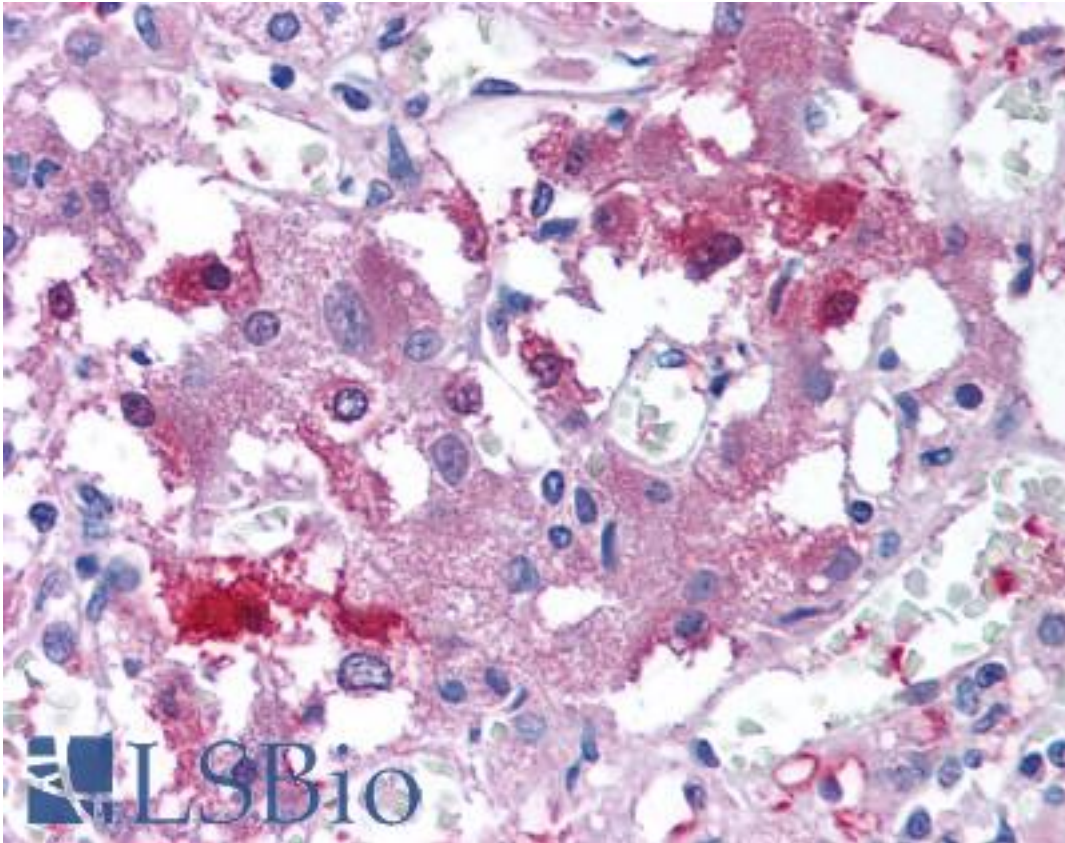


VDU2 / USP20 Rabbit anti-Human Polyclonal (Internal) Antibody - LS-A9343 - LSBio

CatalogID:	LS-A9343
Target:	ubiquitin specific peptidase 20 (USP20)
Synonyms:	USP20 Antibody, Deubiquitinating enzyme 20 Antibody, Ubiquitin specific protease 20 Antibody, Ubiquitin thioesterase 20 Antibody, HVDU2 Antibody, KIAA1003 Antibody, LSFR3A Antibody, Ubiquitin thiolesterase 20 Antibody, VDU2 Antibody
Family / Subfamily:	Protease / Cysteine C19
Host	USP20 antibody was produced in Rabbit
Clonality:	Polyclonal
Immunogen Species:	VDU2 / USP20 antibody was raised against Human
Antigen Type:	Synthetic peptide
Immunogen:	VDU2 / USP20 antibody was raised against synthetic 18 amino acid peptide from internal region of human USP20. Percent identity with other species by BLAST analysis: Human, Gorilla, Gibbon, Monkey, Hamster, Elephant, Dog, Horse, Rabbit (100%); Orangutan, Marmoset, Mouse, Rat, Panda, Bat, Bovine, Pig (94%); Opossum, Platypus (89%); Turkey, Chicken (83%).
Specificity:	Human USP20. BLAST analysis of the peptide immunogen showed no homology with other human proteins.
Epitope:	Internal
Reactivity:	Human, Gorilla, Gibbon, Dog, Hamster, Horse, Rabbit
Predicted Reactivity:	Orangutan, Monkey, Mouse, Rat, Bat, Bovine, Pig
Purification:	Immunoaffinity purified
Presentation:	PBS, 0.1% sodium azide.
Recommended Storage:	Long term: -70°C; Short term: +4°C
Uses:	IHC - Paraffin (10 µg/ml) (Optimal dilution to be determined by the researcher)
Size:	50 µg
Concentration:	1 mg/ml

Immunohistochemistry Image:



Anti-USP20 antibody LS-A9343 IHC of human adrenal medulla. Immunohistochemistry of formalin-fixed, paraffin-embedded tissue after heat-induced antigen retrieval.

Requested From:

Japan

Laboratory Reagent For In Vitro Research Use Only

Not for resale without prior written consent from LifeSpan BioSciences, Inc.

Created on 9/23/2014

© 2014 LifeSpan BioSciences