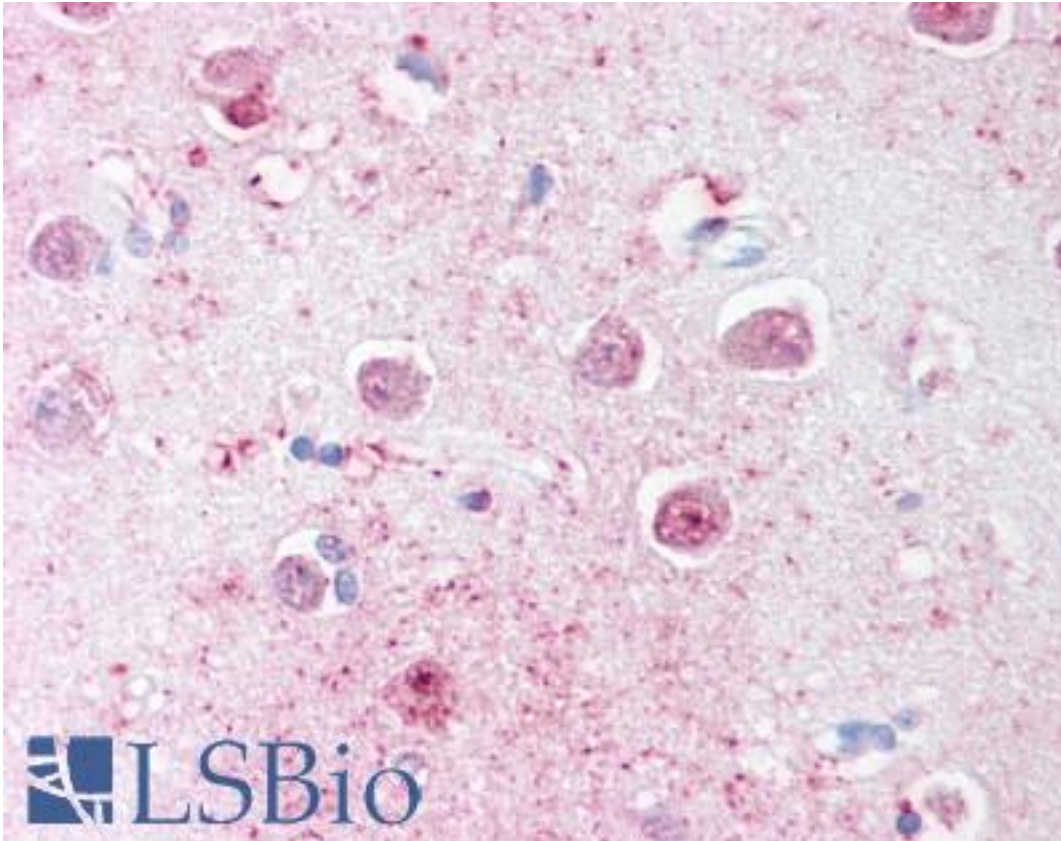


LINGO1 Rabbit anti-Human Polyclonal (C-Terminus) Antibody - LS-A9334 - LSBio	
CatalogID:	LS-A9334
Target:	leucine rich repeat and Ig domain containing 1 (LINGO1)
Synonyms:	LINGO1 Antibody, LERN1 Antibody, LRRN6A Antibody, UNQ201 Antibody
Host	LINGO1 antibody was produced in Rabbit
Clonality:	Polyclonal
Immunogen Species:	LINGO1 antibody was raised against Human
Antigen Type:	Synthetic peptide
Immunogen:	LINGO1 antibody was raised against synthetic 14 amino acid peptide from C-terminus of human LINGO1. Percent identity with other species by BLAST analysis: Human, Gorilla, Orangutan, Monkey, Marmoset, Mouse, Rat, Bovine, Dog, Bat, Elephant, Panda, Horse, Rabbit, Pig (100%).
Specificity:	Human LINGO1. BLAST analysis of the peptide immunogen showed no homology with other human proteins.
Epitope:	C-Terminus
Reactivity:	Human, Gorilla, Orangutan, Monkey, Mouse, Rat, Bat, Bovine, Dog, Horse, Pig, Rabbit
Purification:	Immunoaffinity purified
Presentation:	PBS, 0.1% sodium azide.
Recommended Storage:	Store at 4°C for short term applications. For long term storage, aliquot and store at -20°C.
Usage Summary:	Immunohistochemistry: LS-A9334 was validated for use in immunohistochemistry on a panel of 21 formalin-fixed, paraffin-embedded (FFPE) human tissues after heat induced antigen retrieval in pH 6.0 citrate buffer. After incubation with the primary antibody, slides were incubated with biotinylated secondary antibody, followed by alkaline phosphatase-streptavidin and chromogen. The stained slides were evaluated by a pathologist to confirm staining specificity. The optimal working concentration for LS-A9334 was determined to be 20 ug/ml.
Uses:	IHC - Paraffin (20 µg/ml) (Optimal dilution to be determined by the researcher)
Size:	50 µg
Concentration:	1 mg/ml

Immunohistochemistry Image:



Anti-LINGO1 antibody LS-A9334 IHC of human brain, cortex. Immunohistochemistry of formalin-fixed, paraffin-embedded tissue after heat-induced antigen retrieval.

Requested From:

Japan

Laboratory Reagent For In Vitro Research Use Only

Not for resale without prior written consent from LifeSpan BioSciences, Inc.

Created on 9/23/2014

© 2014 LifeSpan BioSciences