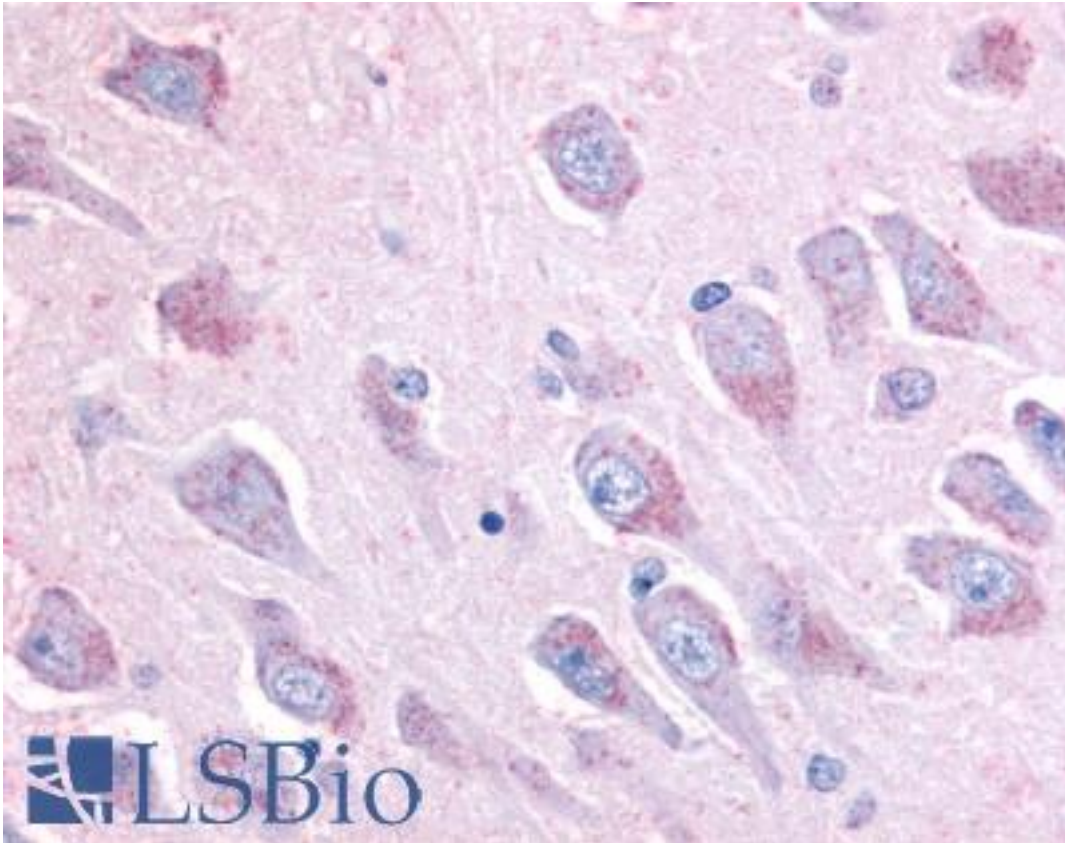


LINGO1 Rabbit anti-Human Polyclonal (C-Terminus) Antibody - LS-A9332 - LSBio

CatalogID:	LS-A9332
Target:	leucine rich repeat and Ig domain containing 1 (LINGO1)
Synonyms:	LINGO1 Antibody, LERN1 Antibody, LRRN6A Antibody, UNQ201 Antibody
Host	LINGO1 antibody was produced in Rabbit
Clonality:	Polyclonal
Immunogen Species:	LINGO1 antibody was raised against Human
Antigen Type:	Synthetic peptide
Immunogen:	LINGO1 antibody was raised against synthetic 16 amino acid peptide from C-terminus of human LINGO1. Percent identity with other species by BLAST analysis: Human, Gorilla, Orangutan, Monkey, Marmoset, Mouse, Rat, Elephant, Panda, Bovine, Pig, Opossum, Turkey, Chicken (100%); Bat, Horse, Xenopus (94%); Dog (88%); Rabbit (81%).
Specificity:	Human LINGO1. BLAST analysis of the peptide immunogen showed no homology with other human proteins.
Epitope:	C-Terminus
Reactivity:	Human, Gorilla, Orangutan, Monkey, Mouse, Rat, Bovine, Pig, Chicken
Predicted Reactivity:	Bat, Horse, Xenopus
Purification:	Immunoaffinity purified
Presentation:	PBS, 0.1% sodium azide.
Recommended Storage:	Store at 4°C for short term applications. For long term storage, aliquot and store at -20°C.
Uses:	IHC - Paraffin (5 µg/ml) (Optimal dilution to be determined by the researcher)
Size:	50 µg
Concentration:	1 mg/ml

Immunohistochemistry Image:



Anti-LINGO1 antibody LS-A9332 IHC of human brain, hippocampus. Immunohistochemistry of formalin-fixed, paraffin-embedded tissue after heat-induced antigen retrieval.

Requested From:

Japan

Laboratory Reagent For In Vitro Research Use Only

Not for resale without prior written consent from LifeSpan BioSciences, Inc.

Created on 9/23/2014

© 2014 LifeSpan BioSciences