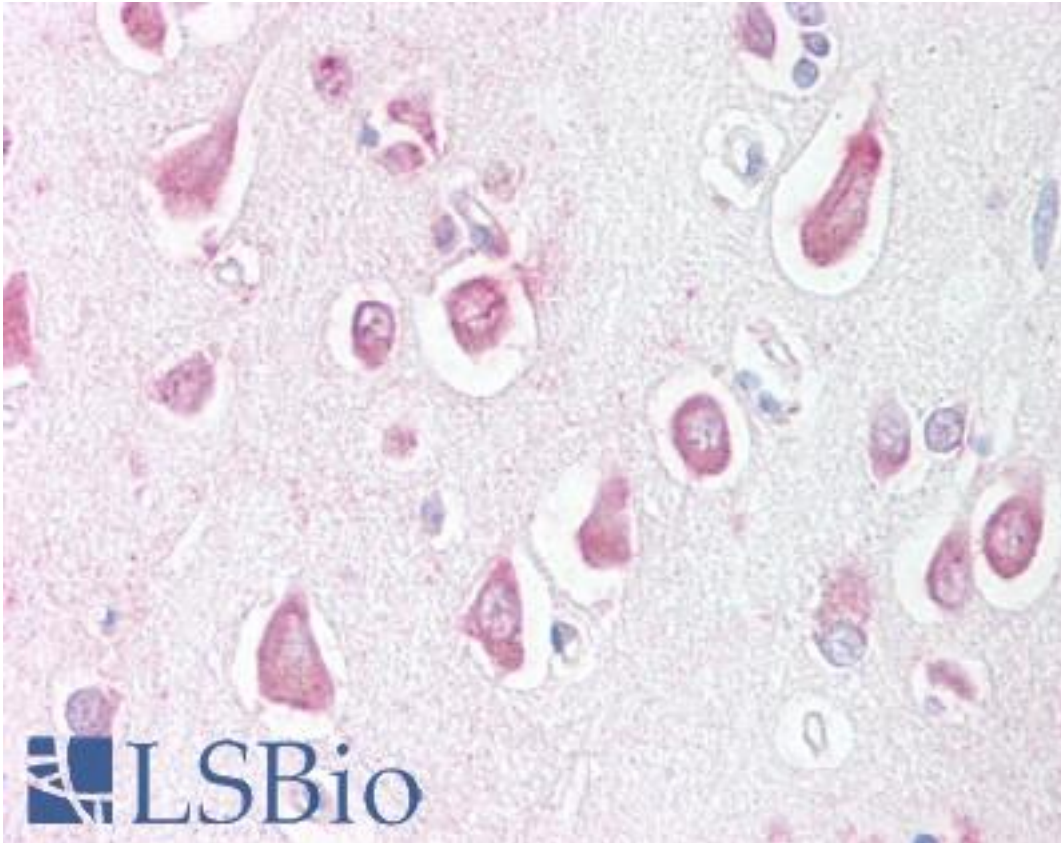


**LINGO1 Rabbit anti-Human Polyclonal (Internal) Antibody - LS-A9329 - LSBio**

<b>CatalogID:</b>	LS-A9329
<b>Target:</b>	leucine rich repeat and Ig domain containing 1 (LINGO1)
<b>Synonyms:</b>	LINGO1 Antibody, LERN1 Antibody, LRRN6A Antibody, UNQ201 Antibody
<b>Host</b>	LINGO1 antibody was produced in Rabbit
<b>Clonality:</b>	Polyclonal
<b>Immunogen Species:</b>	LINGO1 antibody was raised against Human
<b>Antigen Type:</b>	Synthetic peptide
<b>Immunogen:</b>	LINGO1 antibody was raised against synthetic 17 amino acid peptide from internal region of human LINGO1. Percent identity with other species by BLAST analysis: Human, Gorilla, Orangutan, Monkey, Marmoset, Mouse, Rat, Elephant, Panda, Bovine, Dog, Horse, Rabbit, Pig, Stickleback, Zebrafish (100%); Bat, Opossum, Turkey, Chicken, Pufferfish (94%); Xenopus (82%).
<b>Specificity:</b>	Human LINGO1. BLAST analysis of the peptide immunogen showed no homology with other human proteins.
<b>Epitope:</b>	Internal
<b>Reactivity:</b>	Human, Gorilla, Orangutan, Monkey, Mouse, Rat, Bovine, Dog, Horse, Pig, Rabbit, Zebrafish
<b>Predicted Reactivity:</b>	Bat, Chicken
<b>Purification:</b>	Immunoaffinity purified
<b>Presentation:</b>	PBS, 0.1% sodium azide.
<b>Recommended Storage:</b>	Store at 4°C for short term applications. For long term storage, aliquot and store at -20°C.
<b>Uses:</b>	IHC - Paraffin (20 µg/ml) (Optimal dilution to be determined by the researcher)
<b>Size:</b>	50 µg
<b>Concentration:</b>	1 mg/ml

**Immunohistochemistry Image:**



Anti-LINGO1 antibody LS-A9329 IHC of human brain, cortex. Immunohistochemistry of formalin-fixed, paraffin-embedded tissue after heat-induced antigen retrieval.

**Requested From:**

Japan

Laboratory Reagent For In Vitro Research Use Only

Not for resale without prior written consent from LifeSpan BioSciences, Inc.

Created on 9/23/2014

© 2014 LifeSpan BioSciences