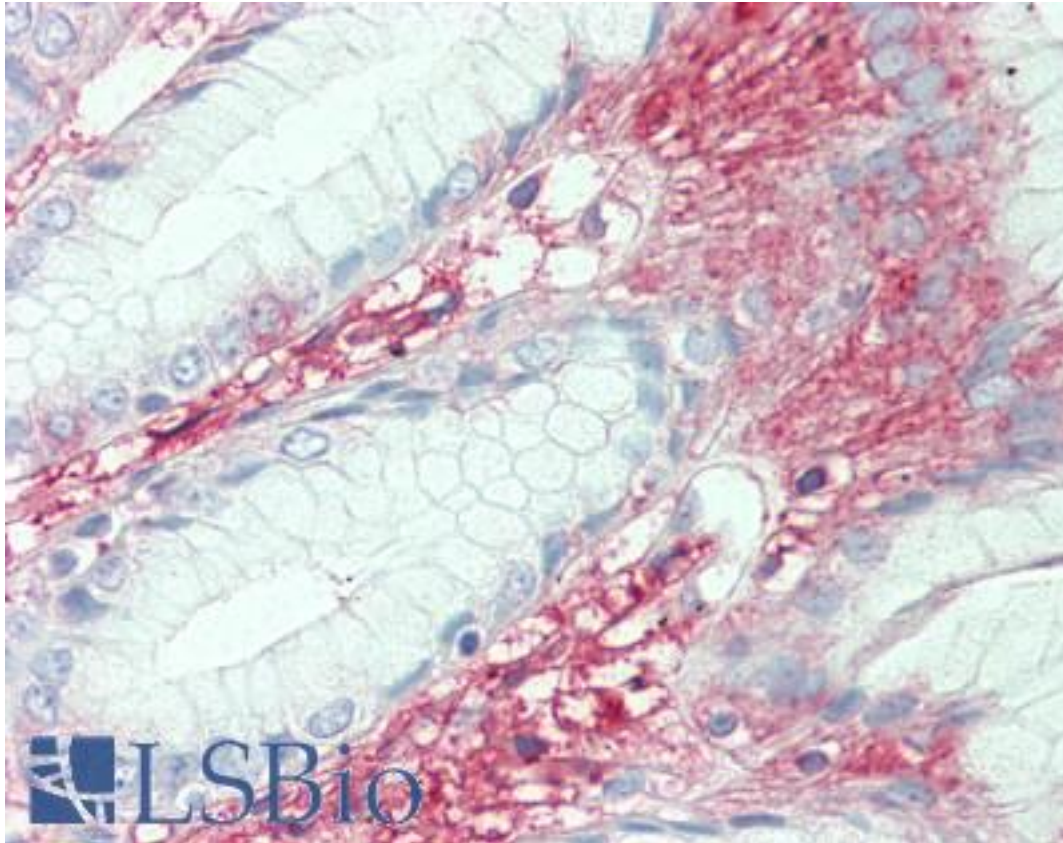


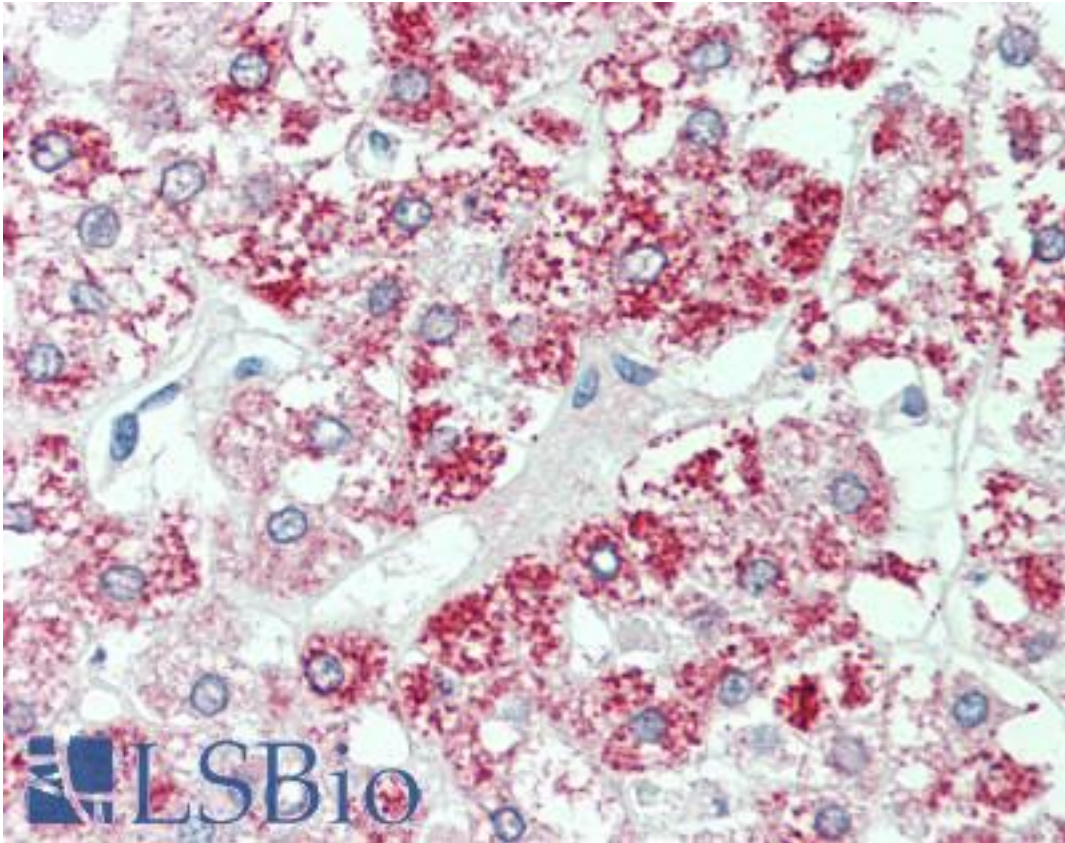
SLC7A2 Rabbit anti-Human Polyclonal (Internal) Antibody - LS-A9306 - LSBio	
CatalogID:	LS-A9306
Target:	solute carrier family 7 (cationic amino acid transporter, y+ system), member 2 (SLC7A2)
Synonyms:	SLC7A2 Antibody, ATRC2 Antibody, CAT2 Antibody, HCAT2 Antibody, CAT-2 Antibody
Family / Subfamily:	Transporter / Cationic amino acid transporter
Host	SLC7A2 antibody was produced in Rabbit
Clonality:	Polyclonal
Immunogen Species:	SLC7A2 antibody was raised against Human
Antigen Type:	Synthetic peptide
Immunogen:	SLC7A2 antibody was raised against synthetic 12 amino acid peptide from internal region of human SLC7A2. Percent identity with other species by BLAST analysis: Human, Chimpanzee, Gorilla, Monkey, Mouse, Rat, Rabbit, Pig (100%); Orangutan, Gibbon, Galago, Marmoset, Hamster, Bovine, Bat, Horse (92%); Panda, Dog, Platypus (83%).
Specificity:	Human SLC7A2. BLAST analysis of the peptide immunogen showed no homology with other human proteins, except TPR (67%).
Epitope:	Internal
Reactivity:	Human, Chimpanzee, Gorilla, Mouse, Rat, Pig, Rabbit
Predicted Reactivity:	Orangutan, Gibbon, Monkey, Bat, Bovine, Hamster, Horse
Purification:	Immunoaffinity purified
Presentation:	PBS, 0.1% sodium azide.
Recommended Storage:	Long term: -70°C; Short term: +4°C
Usage Summary:	Immunohistochemistry: LS-A9306 was validated for use in immunohistochemistry on a panel of 21 formalin-fixed, paraffin-embedded (FFPE) human tissues after heat induced antigen retrieval in pH 6.0 citrate buffer. After incubation with the primary antibody, slides were incubated with biotinylated secondary antibody, followed by alkaline phosphatase-streptavidin and chromogen. The stained slides were evaluated by a pathologist to confirm staining specificity. The optimal working concentration for LS-A9306 was determined to be 15 ug/ml.
Uses:	IHC - Paraffin (15 µg/ml) (Optimal dilution to be determined by the researcher)
Size:	50 µg
Concentration:	1 mg/ml

Immunohistochemistry Image:



Anti-SLC7A2 antibody LS-A9306 IHC of human stomach. Immunohistochemistry of formalin-fixed, paraffin-embedded tissue after heat-induced antigen retrieval.

Immunohistochemistry Image:



Anti-SLC7A2 antibody LS-A9306 IHC of human adrenal. Immunohistochemistry of formalin-fixed, paraffin-embedded tissue after heat-induced antigen retrieval.

Requested From:

Japan

Laboratory Reagent For In Vitro Research Use Only

Not for resale without prior written consent from LifeSpan BioSciences, Inc.

Created on 9/23/2014

© 2014 LifeSpan BioSciences