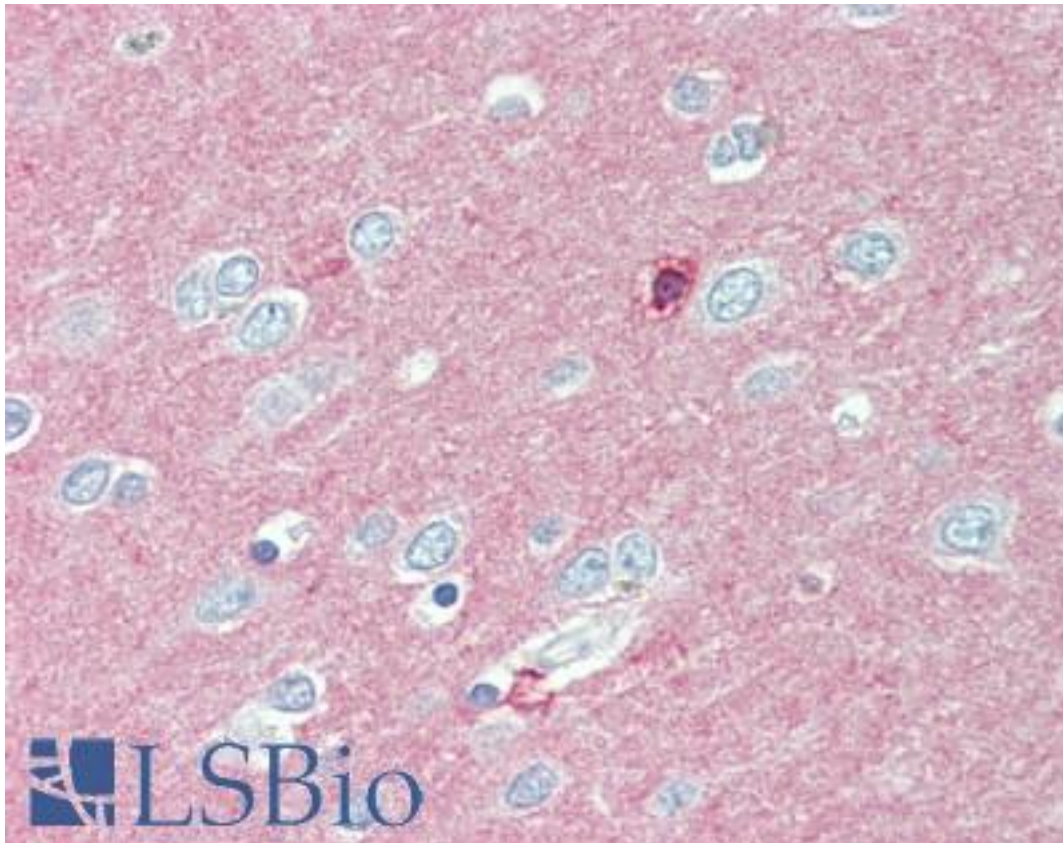


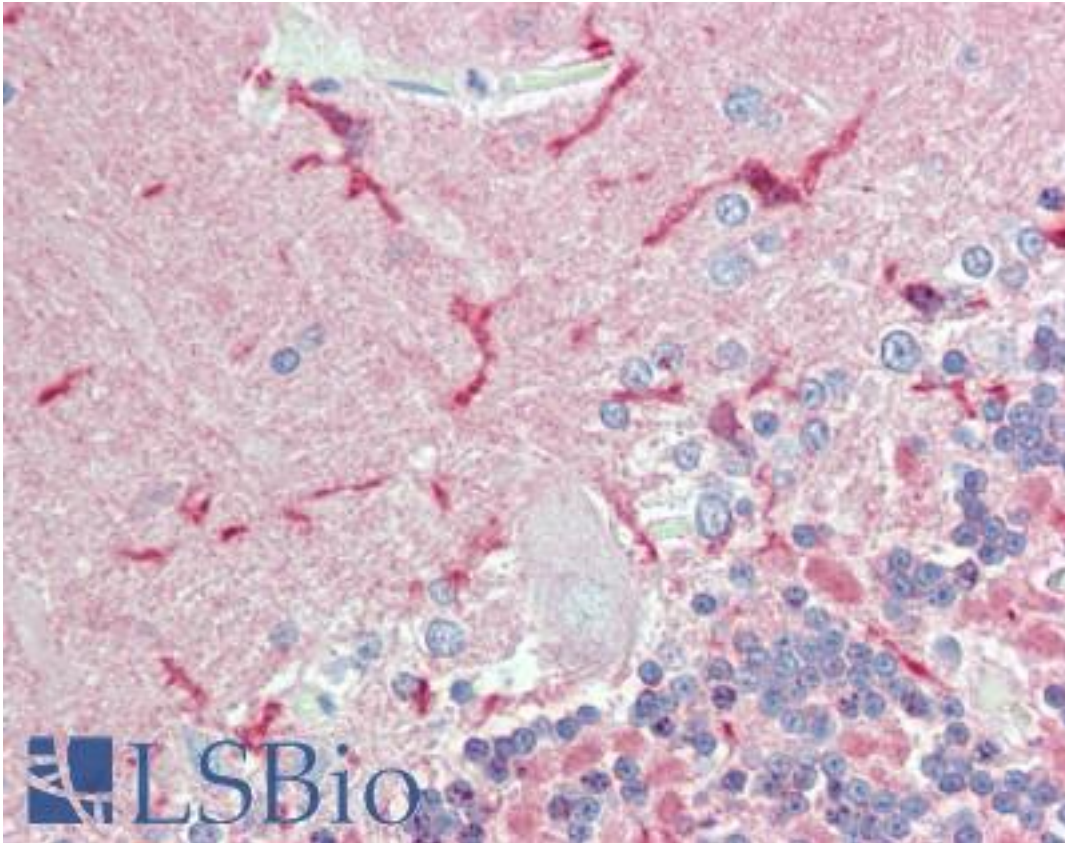
CADM2 Rabbit anti-Human Polyclonal (Internal) Antibody - LS-A9291 - LSBio	
CatalogID:	LS-A9291
Target:	cell adhesion molecule 2 (CADM2)
Synonyms:	CADM2 Antibody, Cell adhesion molecule 2 Antibody, IGSF4D Antibody, Necl-3 Antibody, Nectin-like 3 Antibody, SynCAM2 Antibody, Nectin-like protein 3 Antibody, SynCAM 2 Antibody, NECL3 Antibody
Host	CADM2 antibody was produced in Rabbit
Clonality:	Polyclonal
Immunogen Species:	CADM2 antibody was raised against Human
Antigen Type:	Synthetic peptide
Immunogen:	CADM2 antibody was raised against synthetic 14 amino acid peptide from internal region of human CADM2. Percent identity with other species by BLAST analysis: Human, Chimpanzee, Gorilla, Orangutan, Gibbon, Monkey, Galago, Marmoset, Mouse, Rat, Hamster, Elephant, Panda, Bovine, Bat, Horse, Rabbit, Pig, Opossum, Turkey, Chicken, Platypus, Lizard (100%); Dog, Guinea pig, Zebra finch (93%).
Specificity:	Human CADM2. BLAST analysis of the peptide immunogen showed no homology with other human proteins.
Epitope:	Internal
Reactivity:	Human, Chimpanzee, Gorilla, Orangutan, Gibbon, Monkey, Mouse, Rat, Bat, Bovine, Hamster, Horse, Pig, Rabbit, Chicken
Predicted Reactivity:	Dog, Guinea pig
Purification:	Immunoaffinity purified
Presentation:	PBS, 0.1% sodium azide.
Recommended Storage:	Long term: -70°C; Short term: +4°C
Usage Summary:	Immunohistochemistry: LS-A9291 was validated for use in immunohistochemistry on a panel of 21 formalin-fixed, paraffin-embedded (FFPE) human tissues after heat induced antigen retrieval in pH 6.0 citrate buffer. After incubation with the primary antibody, slides were incubated with biotinylated secondary antibody, followed by alkaline phosphatase-streptavidin and chromogen. The stained slides were evaluated by a pathologist to confirm staining specificity. The optimal working concentration for LS-A9291 was determined to be 10 ug/ml.
Uses:	IHC - Paraffin (10 µg/ml) (Optimal dilution to be determined by the researcher)
Size:	50 µg
Concentration:	1 mg/ml

Immunohistochemistry Image:



Anti-CADM2 antibody LS-A9291 IHC of human brain, cortex. Immunohistochemistry of formalin-fixed, paraffin-embedded tissue after heat-induced antigen retrieval.

Immunohistochemistry Image:



Anti-CADM2 antibody LS-A9291 IHC of human brain, cerebellum. Immunohistochemistry of formalin-fixed, paraffin-embedded tissue after heat-induced antigen retrieval.

Requested From:

Japan

Laboratory Reagent For In Vitro Research Use Only

Not for resale without prior written consent from LifeSpan BioSciences, Inc.

Created on 9/23/2014

© 2014 LifeSpan BioSciences