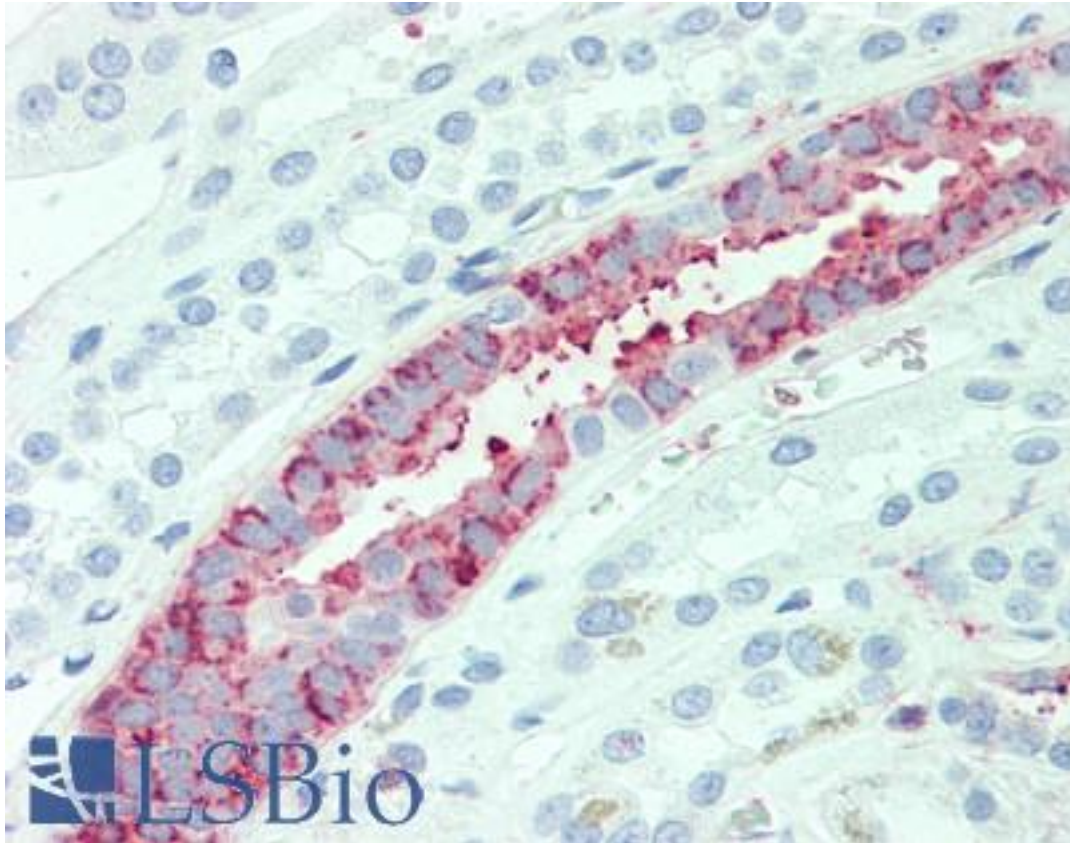


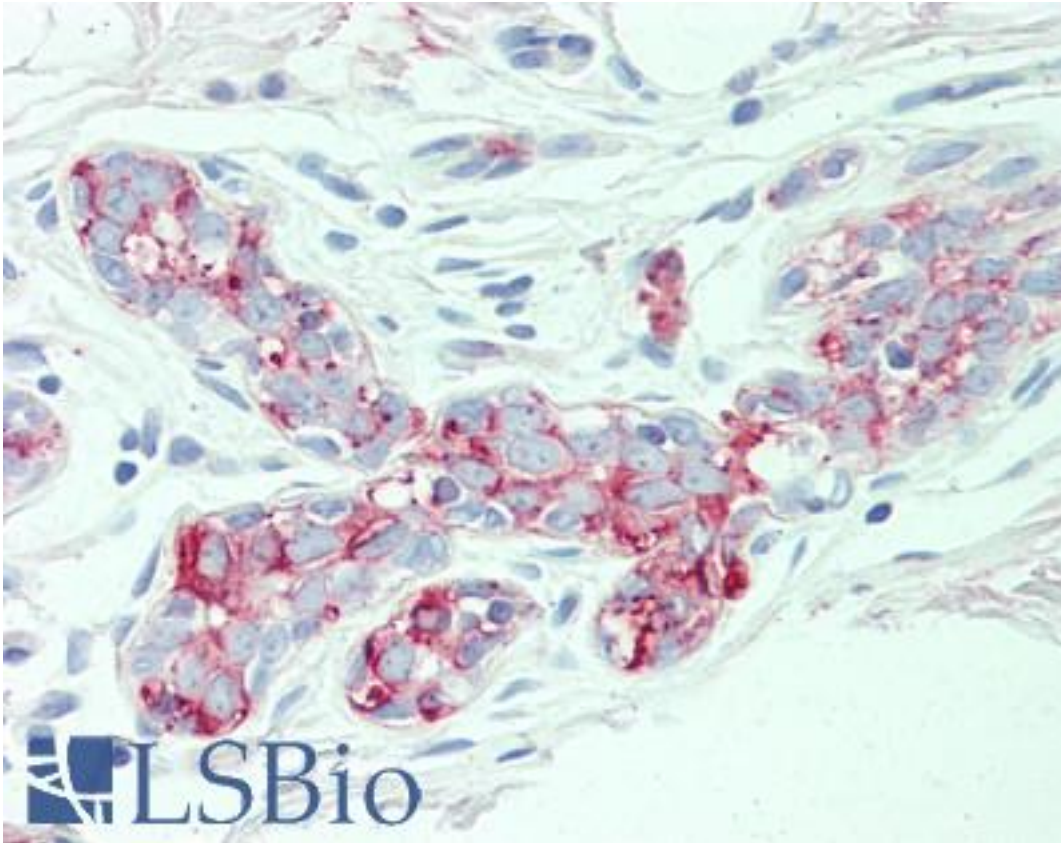
SLC4A2 / AE2 Rabbit anti-Human Polyclonal (N-Terminus) Antibody - LS-A9261 - LSBio	
CatalogID:	LS-A9261
Target:	solute carrier family 4 (anion exchanger), member 2 (SLC4A2)
Synonyms:	SLC4A2 Antibody, Anion exchange protein 2 Antibody, AE 2 Antibody, Anion exchanger 2 Antibody, Anion exchanger 2 type a Antibody, Anion exchanger 2 type b1 Antibody, Anion exchanger 2 type b2 Antibody, BND3L Antibody, EPB3L1 Antibody, AE2 Antibody, HKB3 Antibody, MPB3L Antibody, Anion exchanger type 2 Antibody, Erythrocyte band 3 Antibody, NBND3 Antibody
Family / Subfamily:	Transporter / Anion exchanger
Host	SLC4A2 antibody was produced in Rabbit
Clonality:	Polyclonal
Immunogen Species:	SLC4A2 / AE2 antibody was raised against Human
Antigen Type:	Synthetic peptide
Immunogen:	SLC4A2 / AE2 antibody was raised against synthetic 18 amino acid peptide from N-Terminus of human SLC4A2. Percent identity with other species by BLAST analysis: Human, Chimpanzee, Orangutan, Gibbon, Galago, Marmoset, Mouse, Rat, Hamster, Panda, Dog, Horse, Rabbit, Pig (100%); Monkey, Bovine, Guinea pig (94%); Elephant (89%); Bat, Opossum (83%).
Specificity:	Human SLC4A2. BLAST analysis of the peptide immunogen showed no homology with other human proteins.
Epitope:	N-Terminus
Reactivity:	Human, Chimpanzee, Orangutan, Gibbon, Mouse, Rat, Dog, Hamster, Horse, Pig, Rabbit
Predicted Reactivity:	Monkey, Bovine, Guinea pig
Purification:	Immunoaffinity purified
Presentation:	PBS, 0.1% sodium azide.
Recommended Storage:	Long term: -70°C; Short term: +4°C
Usage Summary:	Immunohistochemistry: LS-A9261 was validated for use in immunohistochemistry on a panel of 21 formalin-fixed, paraffin-embedded (FFPE) human tissues after heat induced antigen retrieval in pH 6.0 citrate buffer. After incubation with the primary antibody, slides were incubated with biotinylated secondary antibody, followed by alkaline phosphatase-streptavidin and chromogen. The stained slides were evaluated by a pathologist to confirm staining specificity. The optimal working concentration for LS-A9261 was determined to be 10 ug/ml.
Uses:	IHC - Paraffin (10 µg/ml) (Optimal dilution to be determined by the researcher)
Size:	50 µg
Concentration:	0.2 mg/ml

Immunohistochemistry Image:



Anti-SLC4A2 antibody LS-A9261 IHC of human kidney. Immunohistochemistry of formalin-fixed, paraffin-embedded tissue after heat-induced antigen retrieval.

Immunohistochemistry Image:



Anti-SLC4A2 antibody LS-A9261 IHC of human breast. Immunohistochemistry of formalin-fixed, paraffin-embedded tissue after heat-induced antigen retrieval.

Requested From:

Japan

Laboratory Reagent For In Vitro Research Use Only

Not for resale without prior written consent from LifeSpan BioSciences, Inc.

Created on 9/23/2014

© 2014 LifeSpan BioSciences