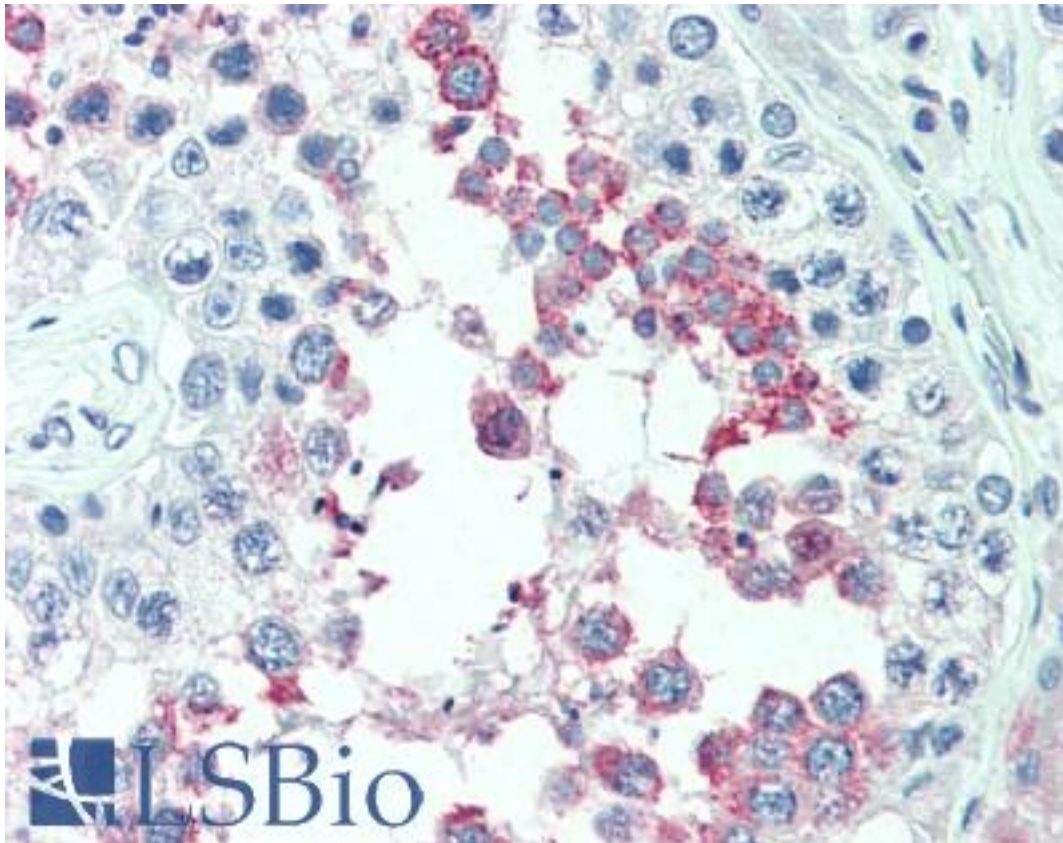


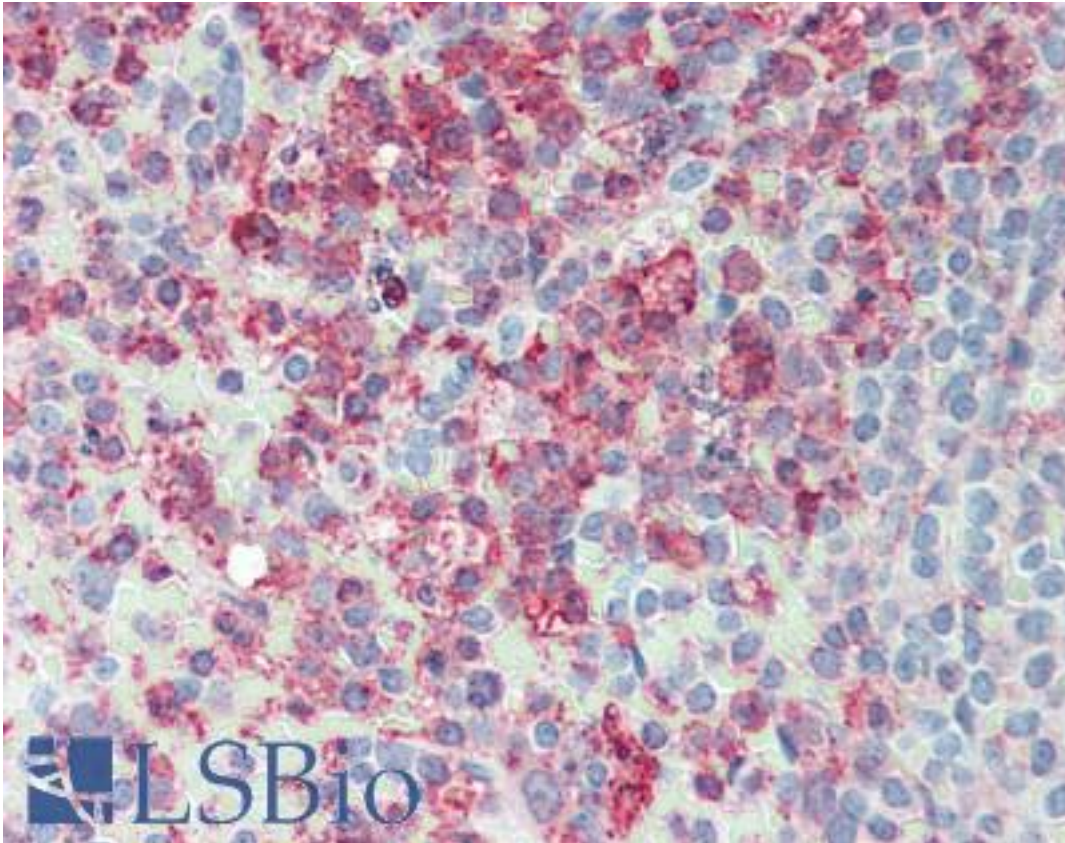
ERMP1 Rabbit anti-Human Polyclonal (Internal) Antibody - LS-A9254 - LSBio	
<b>CatalogID:</b>	LS-A9254
<b>Target:</b>	endoplasmic reticulum metallopeptidase 1 (ERMP1)
<b>Synonyms:</b>	ERMP1 Antibody, Aminopeptidase Fxna Antibody, Felix-ina Antibody, BA207C16.3 Antibody, FXNA Antibody, KIAA1815 Antibody
<b>Host</b>	ERMP1 antibody was produced in Rabbit
<b>Clonality:</b>	Polyclonal
<b>Immunogen Species:</b>	ERMP1 antibody was raised against Human
<b>Antigen Type:</b>	Synthetic peptide
<b>Immunogen:</b>	ERMP1 antibody was raised against synthetic 14 amino acid peptide from internal region of human ERMP1. Percent identity with other species by BLAST analysis: Human, Chimpanzee, Gorilla, Orangutan, Monkey (100%); Gibbon, Marmoset, Guinea pig (93%); Galago, Hamster, Elephant, Horse (86%).
<b>Specificity:</b>	Human ERMP1. BLAST analysis of the peptide immunogen showed no homology with other human proteins.
<b>Epitope:</b>	Internal
<b>Reactivity:</b>	Human, Chimpanzee, Gorilla, Orangutan
<b>Predicted Reactivity:</b>	Gibbon, Monkey, Guinea pig
<b>Purification:</b>	Immunoaffinity purified
<b>Presentation:</b>	PBS, 0.1% sodium azide.
<b>Recommended Storage:</b>	Long term: -70°C; Short term: +4°C
<b>Usage Summary:</b>	Immunohistochemistry: LS-A9254 was validated for use in immunohistochemistry on a panel of 21 formalin-fixed, paraffin-embedded (FFPE) human tissues after heat induced antigen retrieval in pH 6.0 citrate buffer. After incubation with the primary antibody, slides were incubated with biotinylated secondary antibody, followed by alkaline phosphatase-streptavidin and chromogen. The stained slides were evaluated by a pathologist to confirm staining specificity. The optimal working concentration for LS-A9254 was determined to be 10 ug/ml.
<b>Uses:</b>	IHC - Paraffin (10 µg/ml) (Optimal dilution to be determined by the researcher)
<b>Size:</b>	50 µg
<b>Concentration:</b>	1 mg/ml

**Immunohistochemistry Image:**



Anti-ERMP1 antibody LS-A9254 IHC of human testis. Immunohistochemistry of formalin-fixed, paraffin-embedded tissue after heat-induced antigen retrieval.

**Immunohistochemistry Image:**



Anti-ERMP1 antibody LS-A9254 IHC of human spleen. Immunohistochemistry of formalin-fixed, paraffin-embedded tissue after heat-induced antigen retrieval.

**Requested From:**

Japan

Laboratory Reagent For In Vitro Research Use Only

Not for resale without prior written consent from LifeSpan BioSciences, Inc.

Created on 9/23/2014

© 2014 LifeSpan BioSciences