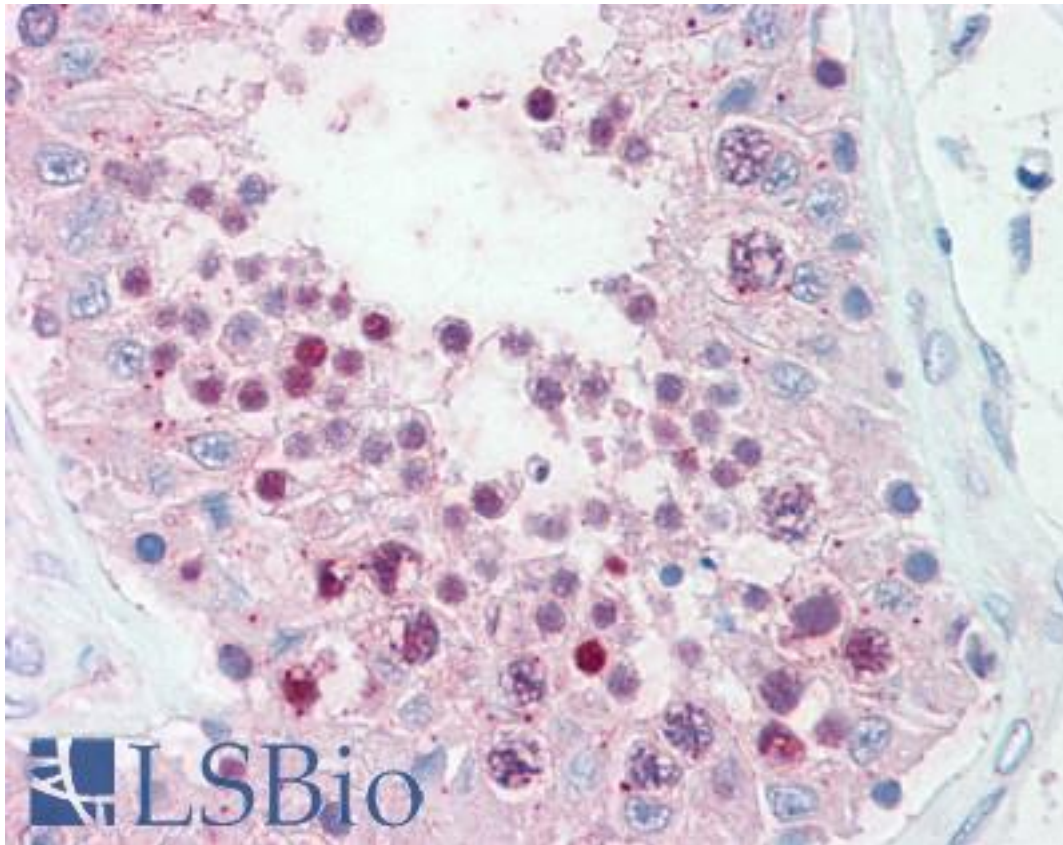


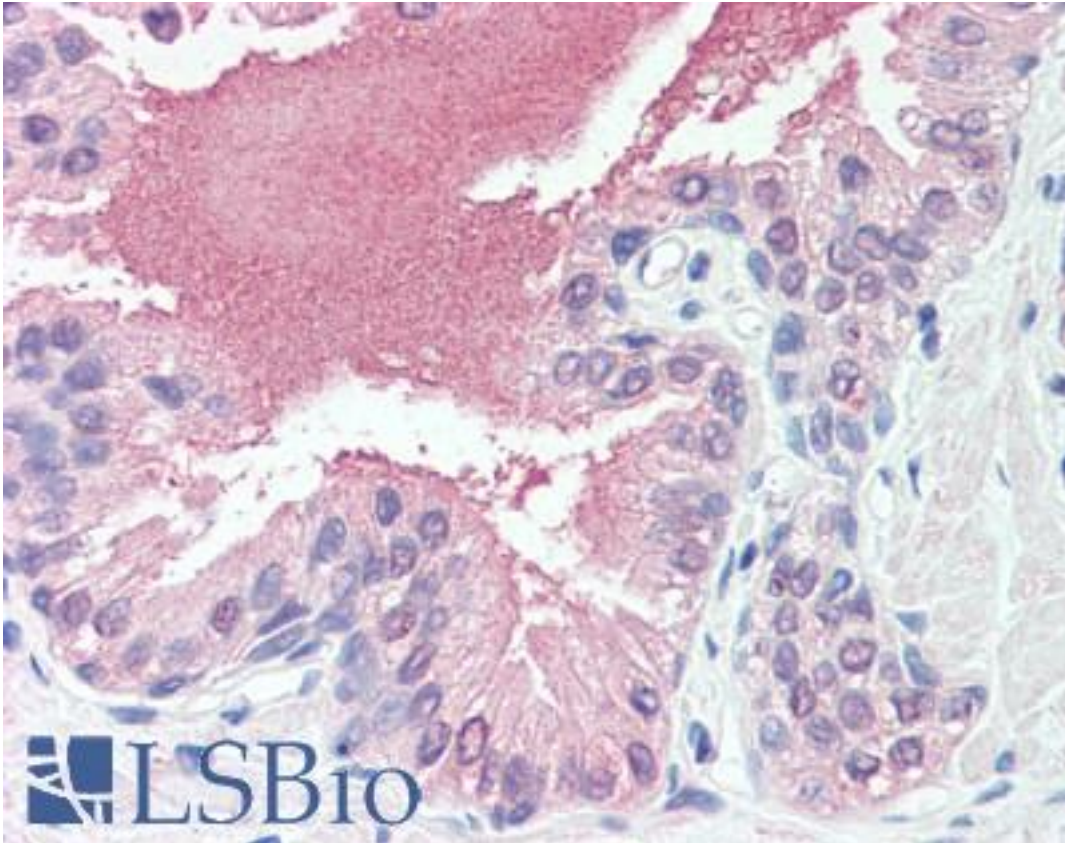
SLITRK6 Rabbit anti-Human Polyclonal (Cytoplasmic Domain) Antibody - LS-A9250 - LSBio	
CatalogID:	LS-A9250
Target:	SLIT and NTRK-like Family, Member 6 (SLITRK6)
Synonyms:	SLITRK6 Antibody, Slit and trk like gene 6 Antibody, SLIT and NTRK-like protein 6 Antibody
Host	SLITRK6 antibody was produced in Rabbit
Clonality:	Polyclonal
Immunogen Species:	SLITRK6 antibody was raised against Human
Antigen Type:	Synthetic peptide
Immunogen:	SLITRK6 antibody was raised against synthetic 17 amino acid peptide from cytoplasmic domain of human SLITRK6. Percent identity with other species by BLAST analysis: Human, Gorilla, Gibbon, Marmoset, Bovine, Horse (100%); Monkey, Bat (94%); Mouse, Elephant, Pig (88%); Rat, Dog, Panda (82%).
Specificity:	Human SLITRK6. BLAST analysis of the peptide immunogen showed no homology with other human proteins.
Epitope:	Cytoplasmic Domain
Reactivity:	Human, Gorilla, Gibbon, Bovine, Horse
Predicted Reactivity:	Monkey, Bat
Purification:	Immunoaffinity purified
Presentation:	PBS, 0.1% sodium azide.
Recommended Storage:	Long term: -70°C; Short term: +4°C
Uses:	IHC - Paraffin (15 - 20 µg/ml) (Optimal dilution to be determined by the researcher)
Size:	50 µg
Concentration:	1 mg/ml

Immunohistochemistry Image:



Anti-SLITRK6 antibody LS-A9250 IHC of human testis. Immunohistochemistry of formalin-fixed, paraffin-embedded tissue after heat-induced antigen retrieval.

Immunohistochemistry Image:



Anti-SLITRK6 antibody LS-A9250 IHC of human prostate. Immunohistochemistry of formalin-fixed, paraffin-embedded tissue after heat-induced antigen retrieval.

Requested From:

Japan

Laboratory Reagent For In Vitro Research Use Only

Not for resale without prior written consent from LifeSpan BioSciences, Inc.

Created on 9/23/2014

© 2014 LifeSpan BioSciences