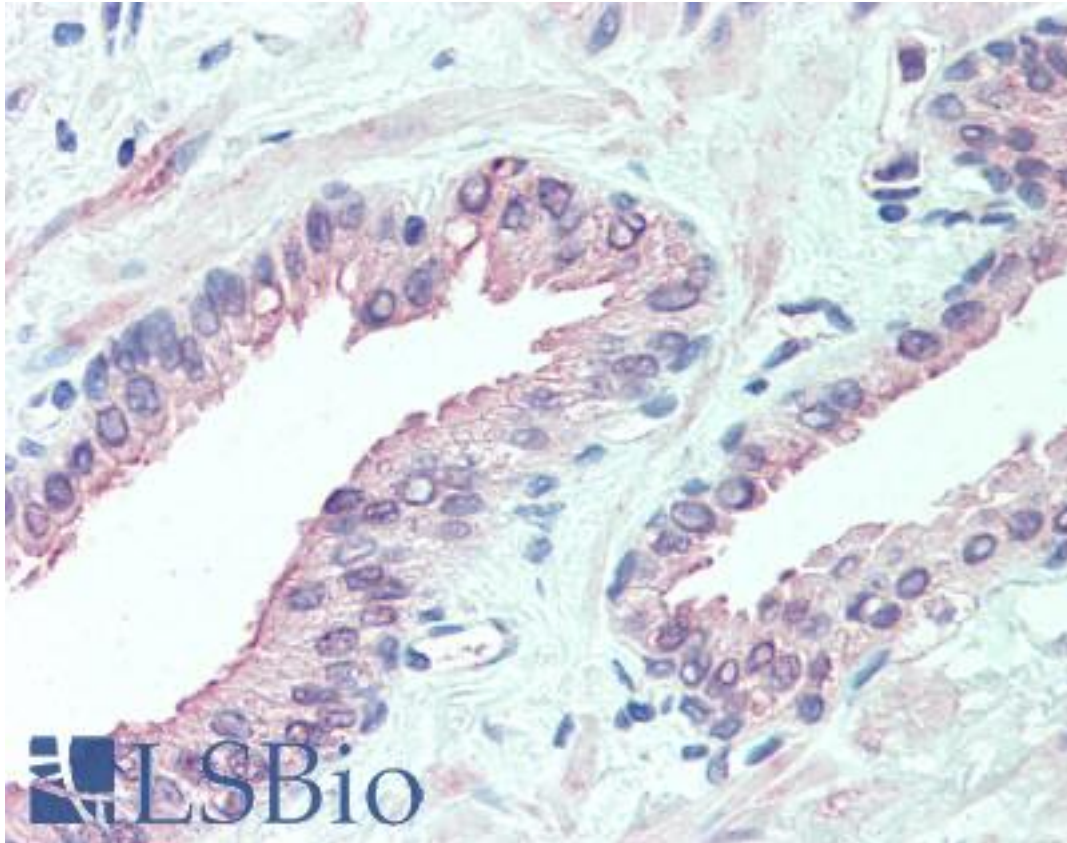


SLITRK6 Rabbit anti-Human Polyclonal (Internal) Antibody - LS-A9246 - LSBio

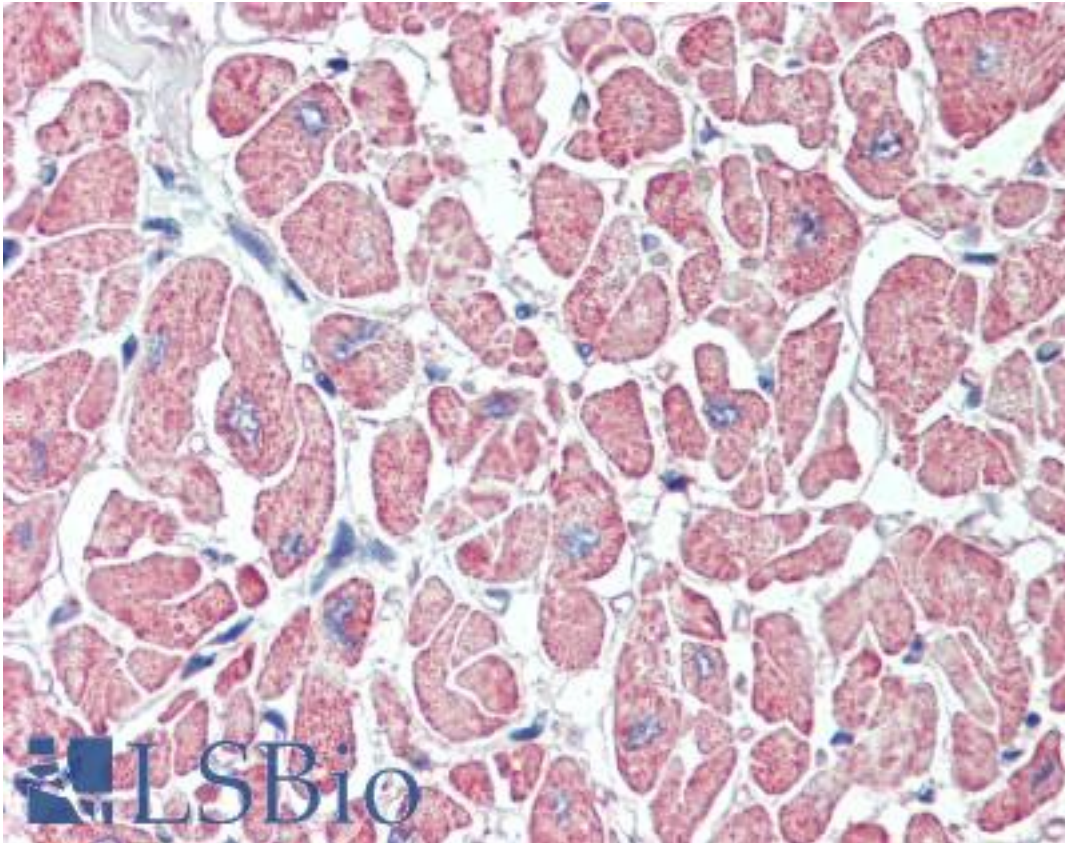
CatalogID:	LS-A9246
Target:	SLIT and NTRK-like Family, Member 6 (SLITRK6)
Synonyms:	SLITRK6 Antibody, Slit and trk like gene 6 Antibody, SLIT and NTRK-like protein 6 Antibody
Host	SLITRK6 antibody was produced in Rabbit
Clonality:	Polyclonal
Immunogen Species:	SLITRK6 antibody was raised against Human
Antigen Type:	Synthetic peptide
Immunogen:	SLITRK6 antibody was raised against synthetic 16 amino acid peptide from internal region of human SLITRK6. Percent identity with other species by BLAST analysis: Human, Chimpanzee, Gibbon, Monkey, Rat, Hamster (100%); Gorilla, Galago, Marmoset, Mouse, Elephant, Pig (94%); Panda, Bovine, Bat, Dog, Horse, Zebra finch, Chicken (88%); Opossum, Turkey (81%).
Specificity:	Human SLITRK6. BLAST analysis of the peptide immunogen showed no homology with other human proteins.
Epitope:	Internal
Reactivity:	Human, Chimpanzee, Gibbon, Rat, Hamster
Predicted Reactivity:	Gorilla, Monkey, Mouse, Pig
Purification:	Immunoaffinity purified
Presentation:	PBS, 0.1% sodium azide.
Recommended Storage:	Long term: -70°C; Short term: +4°C
Usage Summary:	Immunohistochemistry: LS-A9246 was validated for use in immunohistochemistry on a panel of 21 formalin-fixed, paraffin-embedded (FFPE) human tissues after heat induced antigen retrieval in pH 6.0 citrate buffer. After incubation with the primary antibody, slides were incubated with biotinylated secondary antibody, followed by alkaline phosphatase-streptavidin and chromogen. The stained slides were evaluated by a pathologist to confirm staining specificity. The optimal working concentration for LS-A9246 was determined to be 15 ug/ml.
Uses:	IHC - Paraffin (15 µg/ml) (Optimal dilution to be determined by the researcher)
Size:	50 µg
Concentration:	1 mg/ml

Immunohistochemistry Image:



Anti-SLITRK6 antibody LS-A9246 IHC of human prostate. Immunohistochemistry of formalin-fixed, paraffin-embedded tissue after heat-induced antigen retrieval.

Immunohistochemistry Image:



Anti-SLITRK6 antibody LS-A9246 IHC of human heart. Immunohistochemistry of formalin-fixed, paraffin-embedded tissue after heat-induced antigen retrieval.

Requested From:

Japan

Laboratory Reagent For In Vitro Research Use Only

Not for resale without prior written consent from LifeSpan BioSciences, Inc.

Created on 9/23/2014

© 2014 LifeSpan BioSciences