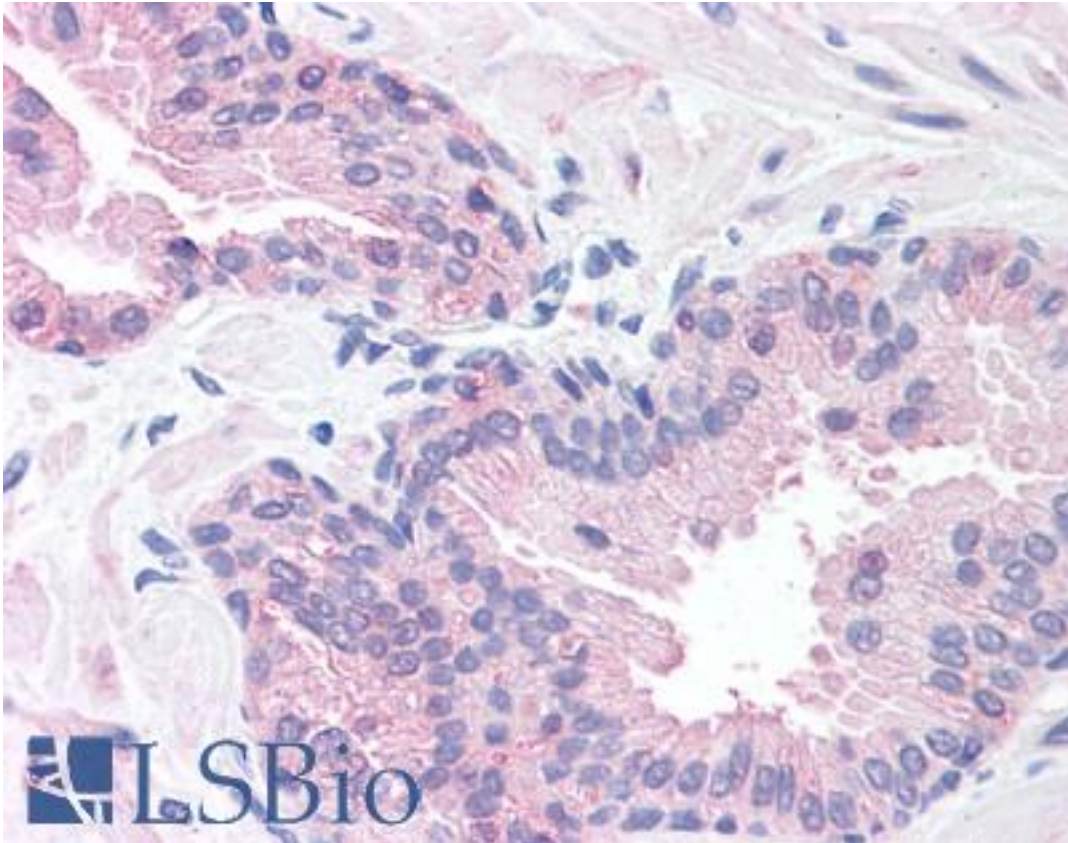


SLITRK6 Rabbit anti-Human Polyclonal (Internal) Antibody - LS-A9245 - LSBio

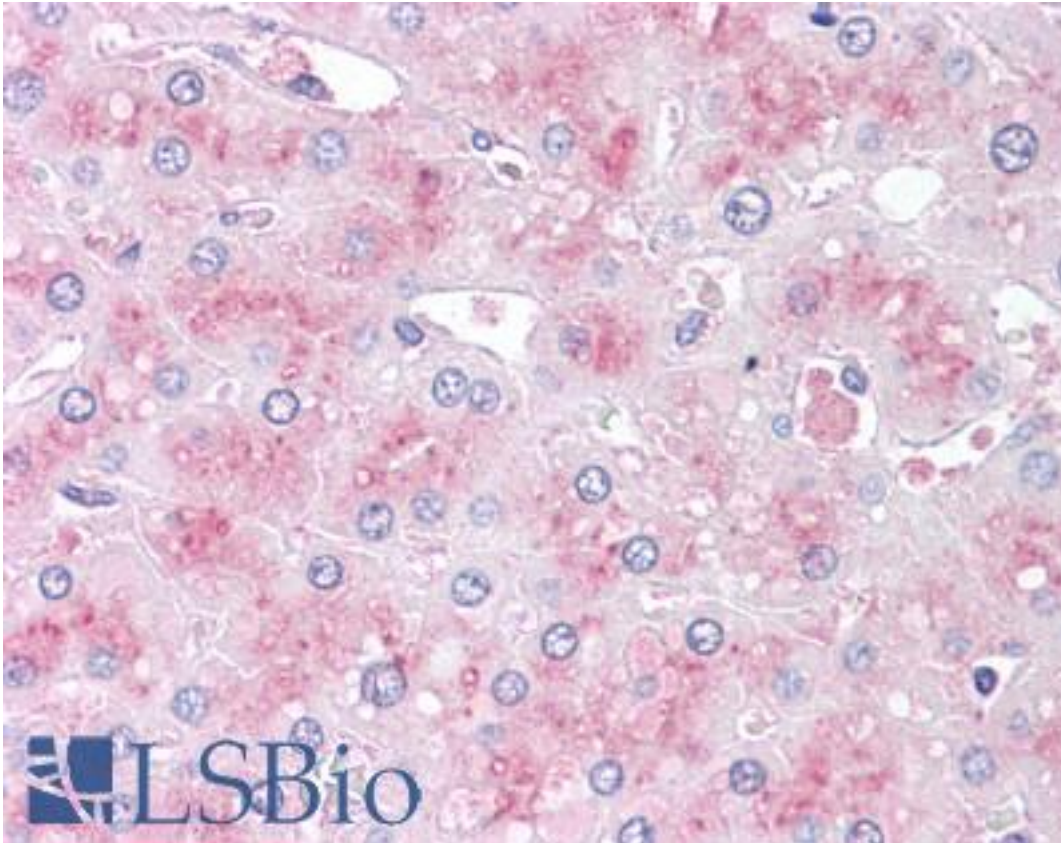
CatalogID:	LS-A9245
Target:	SLIT and NTRK-like Family, Member 6 (SLITRK6)
Synonyms:	SLITRK6 Antibody, Slit and trk like gene 6 Antibody, SLIT and NTRK-like protein 6 Antibody
Host	SLITRK6 antibody was produced in Rabbit
Clonality:	Polyclonal
Immunogen Species:	SLITRK6 antibody was raised against Human
Antigen Type:	Synthetic peptide
Immunogen:	SLITRK6 antibody was raised against synthetic 14 amino acid peptide from internal region of human SLITRK6. Percent identity with other species by BLAST analysis: Human, Gibbon, Monkey, Marmoset, Dog, Bovine, Bat, Panda, Pig (100%); Gorilla, Mouse, Hamster, Elephant (93%); Rat, Horse, Opossum (86%).
Specificity:	Human SLITRK6. BLAST analysis of the peptide immunogen showed no homology with other human proteins.
Epitope:	Internal
Reactivity:	Human, Gibbon, Monkey, Bat, Bovine, Dog, Pig
Predicted Reactivity:	Gorilla, Mouse, Hamster
Purification:	Immunoaffinity purified
Presentation:	PBS, 0.1% sodium azide.
Recommended Storage:	Long term: -70°C; Short term: +4°C
Uses:	IHC - Paraffin (15 µg/ml) (Optimal dilution to be determined by the researcher)
Size:	50 µg
Concentration:	1 mg/ml

Immunohistochemistry Image:



Anti-SLITRK6 antibody LS-A9245 IHC of human prostate. Immunohistochemistry of formalin-fixed, paraffin-embedded tissue after heat-induced antigen retrieval.

Immunohistochemistry Image:



Anti-SLITRK6 antibody LS-A9245 IHC of human liver. Immunohistochemistry of formalin-fixed, paraffin-embedded tissue after heat-induced antigen retrieval.

Requested From:

Japan

Laboratory Reagent For In Vitro Research Use Only

Not for resale without prior written consent from LifeSpan BioSciences, Inc.

Created on 9/23/2014

© 2014 LifeSpan BioSciences