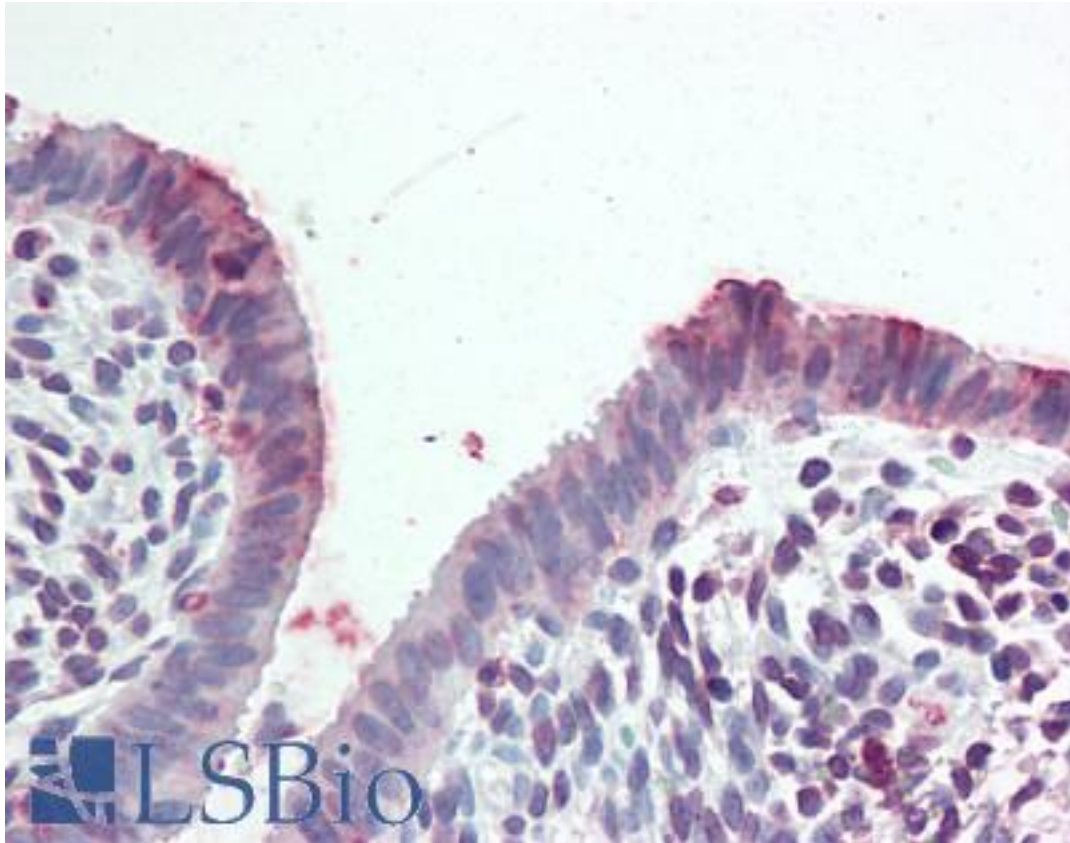


STEAP2 Rabbit anti-Human Polyclonal (C-Terminus) Antibody - LS-A9242 - LSBio

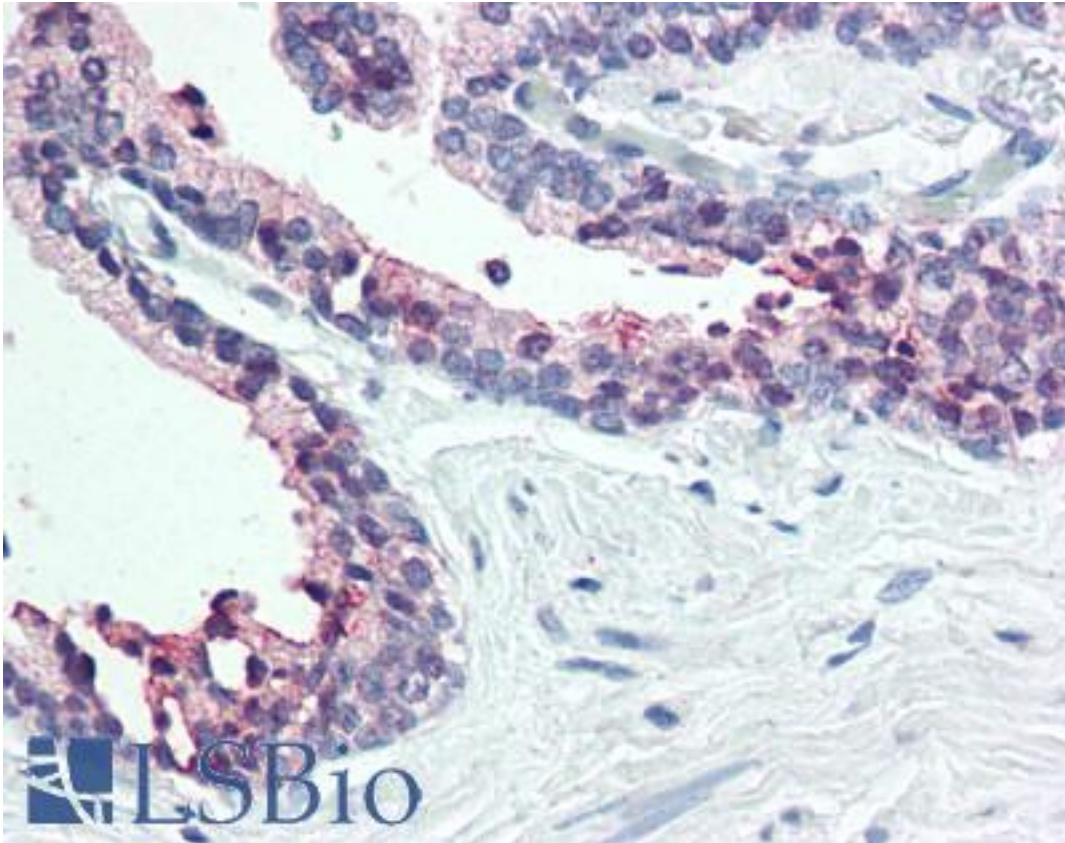
| | |
|------------------------------|--|
| CatalogID: | LS-A9242 |
| Target: | STEAP family member 2, metalloredutase (STEAP2) |
| Synonyms: | STEAP2 Antibody, IPCA-1 Antibody, PCANAP1 Antibody, IPCA1 Antibody, PUMPCn Antibody, STAMP1 Antibody, STMP Antibody, Metalloredutase STEAP2 Antibody |
| Host | STEAP2 antibody was produced in Rabbit |
| Clonality: | Polyclonal |
| Immunogen Species: | STEAP2 antibody was raised against Human |
| Antigen Type: | Synthetic peptide |
| Immunogen: | STEAP2 antibody was raised against synthetic 16 amino acid peptide from C-terminus of human STEAP2. Percent identity with other species by BLAST analysis: Baboon (100%); Human, Gibbon, Galago, Armadillo (94%); Marmoset, Elephant, Panda (88%); Rat, Bovine, Hamster (81%). |
| Specificity: | Human STEAP2. BLAST analysis of the peptide immunogen showed no homology with other human proteins. |
| Epitope: | C-Terminus |
| Reactivity: | Human |
| Predicted Reactivity: | Gibbon |
| Purification: | Immunoaffinity purified |
| Presentation: | PBS, 0.1% sodium azide. |
| Recommended Storage: | Long term: -70°C; Short term: +4°C |
| Uses: | IHC - Paraffin (15 - 20 µg/ml) (Optimal dilution to be determined by the researcher) |
| Size: | 50 µg |
| Concentration: | 1 mg/ml |

Immunohistochemistry Image:



Anti-STEAP2 antibody LS-A9242 IHC of human uterus. Immunohistochemistry of formalin-fixed, paraffin-embedded tissue after heat-induced antigen retrieval.

Immunohistochemistry Image:



Anti-STEAP2 antibody LS-A9242 IHC of human prostate. Immunohistochemistry of formalin-fixed, paraffin-embedded tissue after heat-induced antigen retrieval.

Requested From:

Japan

Laboratory Reagent For In Vitro Research Use Only

Not for resale without prior written consent from LifeSpan BioSciences, Inc.

Created on 9/23/2014

© 2014 LifeSpan BioSciences