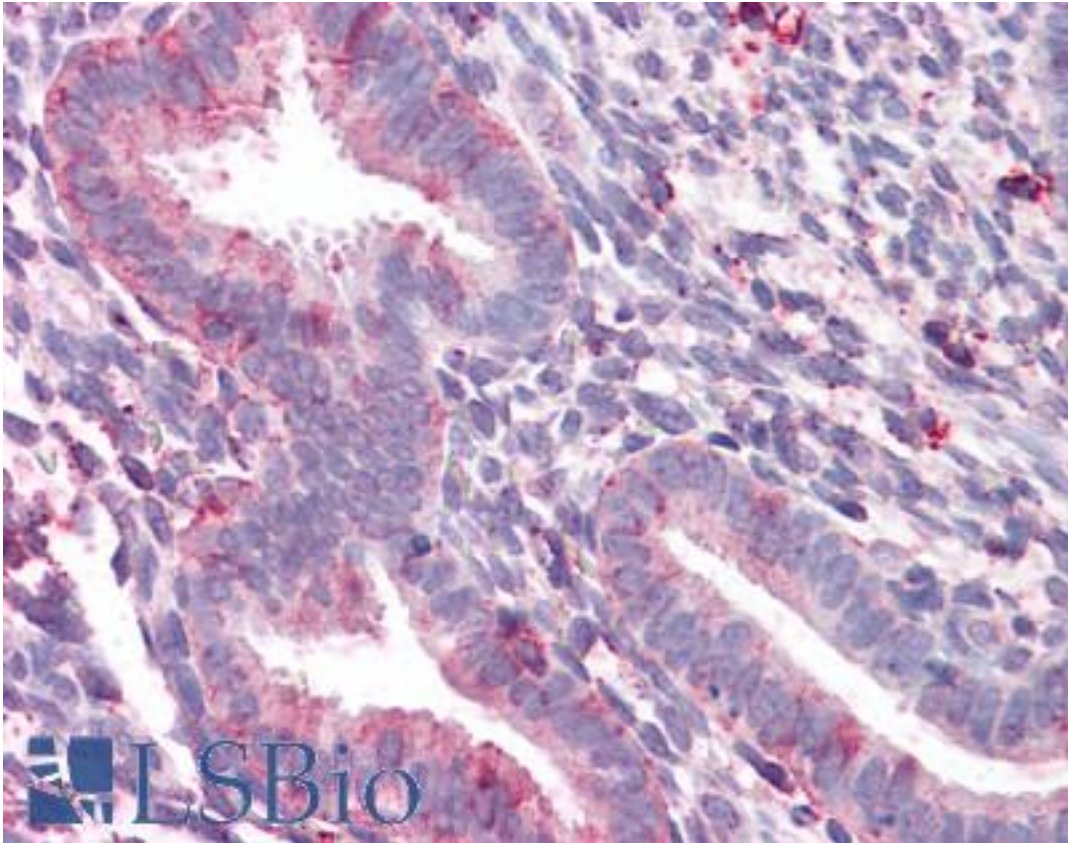


**STEAP2 Rabbit anti-Human Polyclonal (C-Terminus) Antibody - LS-A9241 - LSBio**

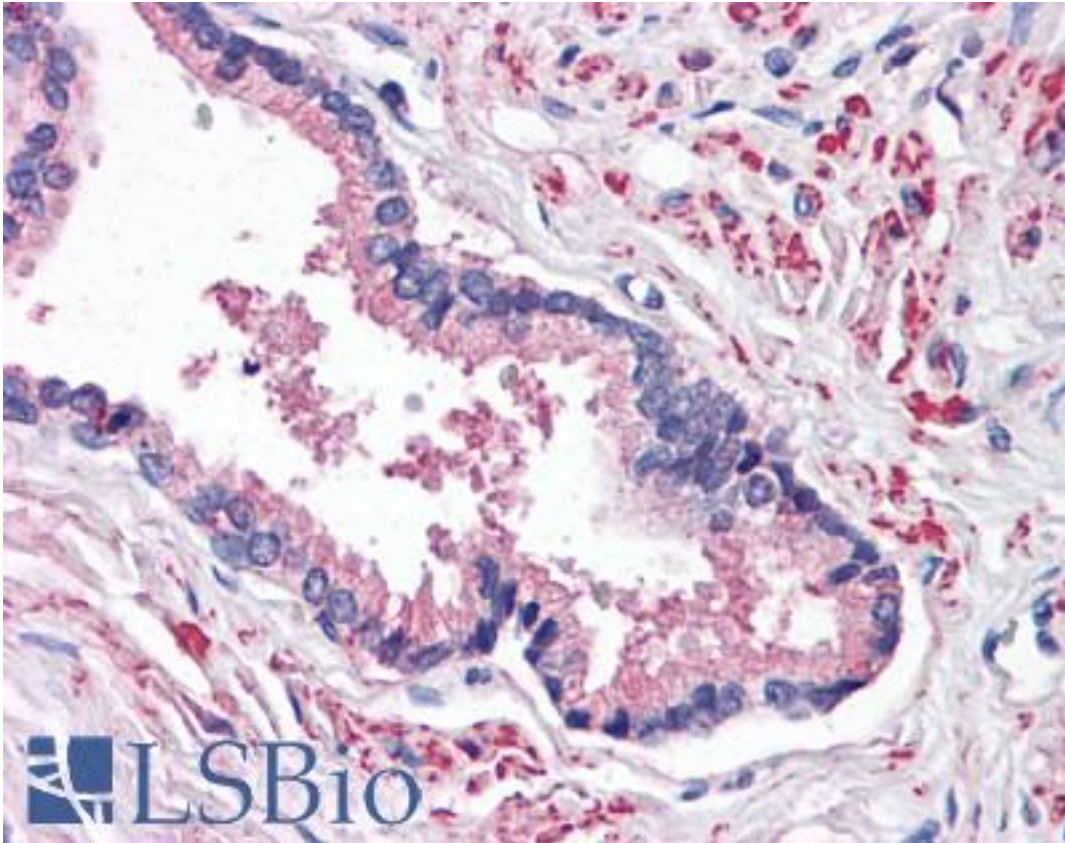
<b>CatalogID:</b>	LS-A9241
<b>Target:</b>	STEAP family member 2, metalloreductase (STEAP2)
<b>Synonyms:</b>	STEAP2 Antibody, IPCA-1 Antibody, PCANAP1 Antibody, IPCA1 Antibody, PUMPCn Antibody, STAMP1 Antibody, STMP Antibody, Metalloreductase STEAP2 Antibody
<b>Host</b>	STEAP2 antibody was produced in Rabbit
<b>Clonality:</b>	Polyclonal
<b>Immunogen Species:</b>	STEAP2 antibody was raised against Human
<b>Antigen Type:</b>	Synthetic peptide
<b>Immunogen:</b>	STEAP2 antibody was raised against synthetic 15 amino acid peptide from C-terminus of human STEAP2. Percent identity with other species by BLAST analysis: Bovine, Bat (100%); Human, Gibbon, Baboon, Galago, Mouse, Dog, Elephant, Panda, Horse, Opossum (93%); Marmoset, Rat, Shrew, Hamster, Rabbit, Pig, Armadillo (87%); Lizard (80%).
<b>Specificity:</b>	Human STEAP2. BLAST analysis of the peptide immunogen showed no homology with other human proteins.
<b>Epitope:</b>	C-Terminus
<b>Reactivity:</b>	Human, Bat, Bovine
<b>Predicted Reactivity:</b>	Gibbon, Mouse, Dog, Horse
<b>Purification:</b>	Immunoaffinity purified
<b>Presentation:</b>	PBS, 0.1% sodium azide.
<b>Recommended Storage:</b>	Long term: -70°C; Short term: +4°C
<b>Uses:</b>	IHC - Paraffin (10 - 12.5 µg/ml) (Optimal dilution to be determined by the researcher)
<b>Size:</b>	50 µg
<b>Concentration:</b>	1 mg/ml

**Immunohistochemistry Image:**



Anti-STEAP2 antibody LS-A9241 IHC of human uterus. Immunohistochemistry of formalin-fixed, paraffin-embedded tissue after heat-induced antigen retrieval.

**Immunohistochemistry Image:**



Anti-STEAP2 antibody LS-A9241 IHC of human prostate. Immunohistochemistry of formalin-fixed, paraffin-embedded tissue after heat-induced antigen retrieval.

**Requested From:**

Japan

Laboratory Reagent For In Vitro Research Use Only

Not for resale without prior written consent from LifeSpan BioSciences, Inc.

Created on 9/23/2014

© 2014 LifeSpan BioSciences