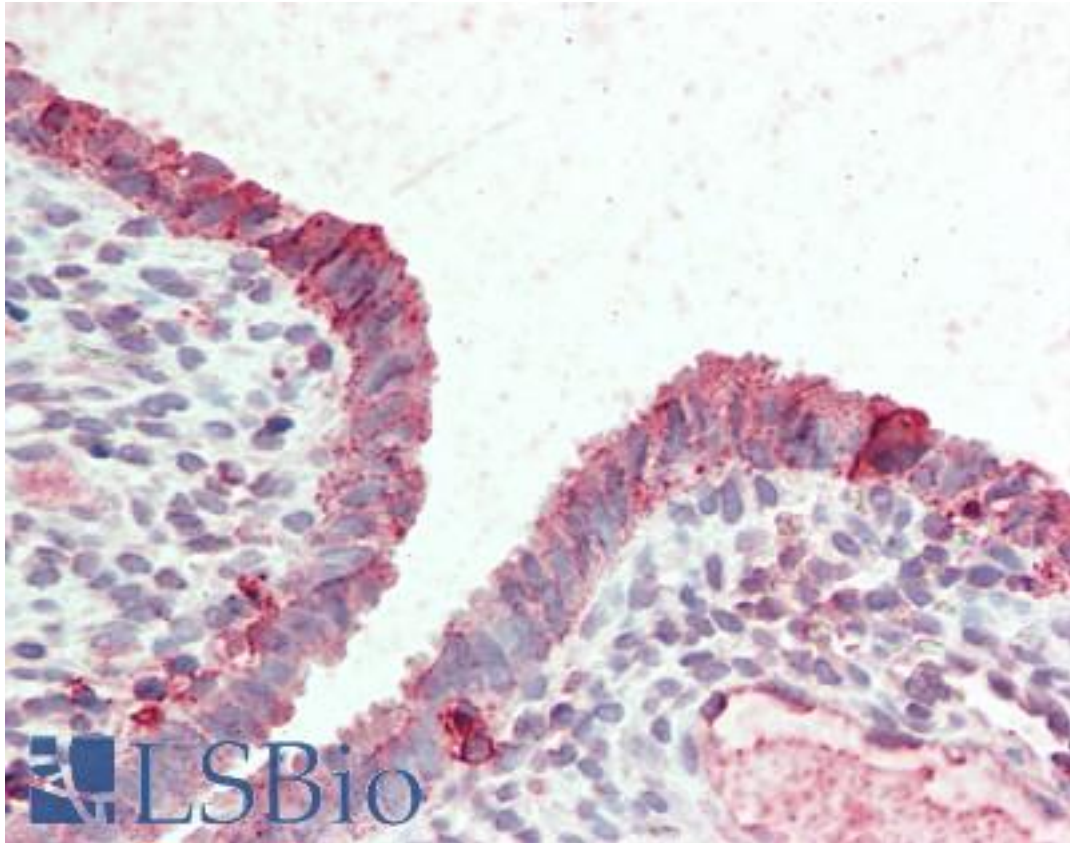


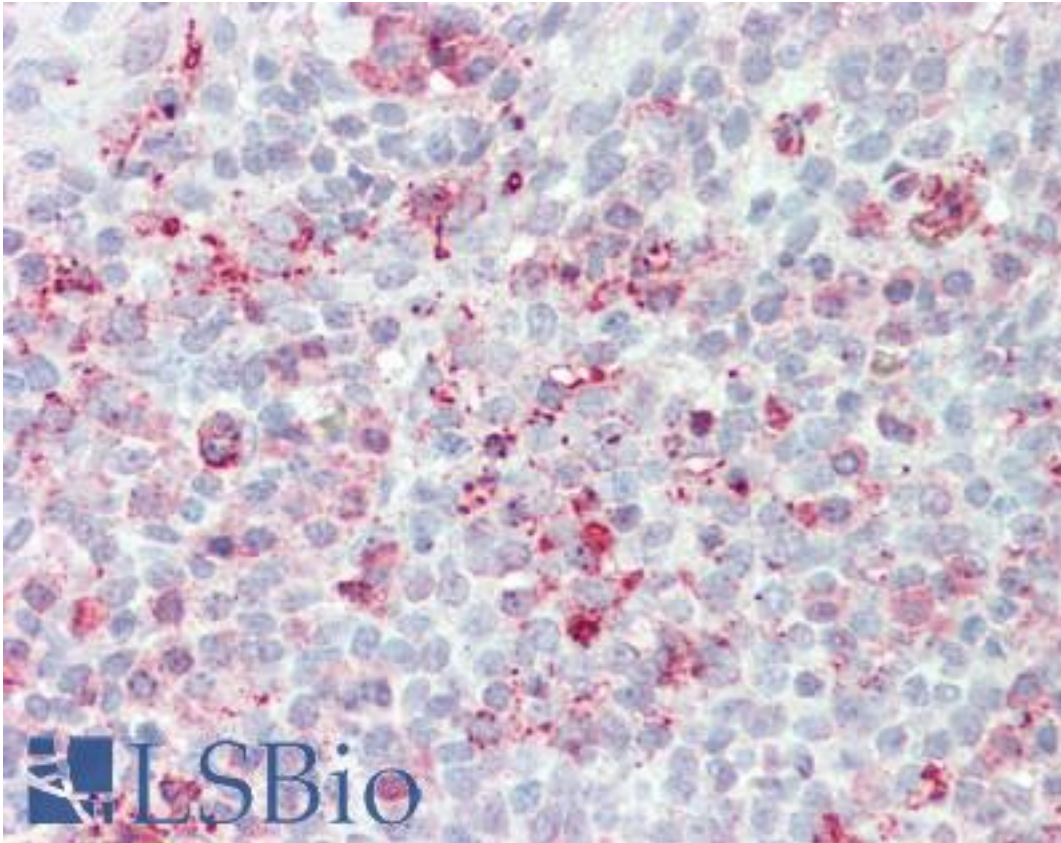
STEAP2 Rabbit anti-Human Polyclonal (Internal) Antibody - LS-A9239 - LSBio	
CatalogID:	LS-A9239
Target:	STEAP family member 2, metalloreductase (STEAP2)
Synonyms:	STEAP2 Antibody, IPCA-1 Antibody, PCANAP1 Antibody, IPCA1 Antibody, PUMPCn Antibody, STAMP1 Antibody, STMP Antibody, Metalloreductase STEAP2 Antibody
Host	STEAP2 antibody was produced in Rabbit
Clonality:	Polyclonal
Immunogen Species:	STEAP2 antibody was raised against Human
Antigen Type:	Synthetic peptide
Immunogen:	STEAP2 antibody was raised against synthetic 15 amino acid peptide from internal region of human STEAP2. Percent identity with other species by BLAST analysis: Human, Chimpanzee, Gorilla, Orangutan, Gibbon, Baboon, Monkey, Galago, Marmoset, Mouse, Rat, Hamster, Elephant, Panda, Bat, Dog, Rabbit, Horse, Opossum, Guinea pig, Armadillo, Platypus (100%); Bovine, Pig, Turkey, Chicken, Zebrafish (93%); Shrew, Zebra finch, Xenopus (87%).
Specificity:	Human STEAP2. BLAST analysis of the peptide immunogen showed no homology with other human proteins.
Epitope:	Internal
Reactivity:	Human, Chimpanzee, Gorilla, Orangutan, Gibbon, Monkey, Mouse, Rat, Bat, Dog, Guinea pig, Hamster, Horse, Rabbit
Predicted Reactivity:	Bovine, Pig, Chicken, Zebrafish
Purification:	Immunoaffinity purified
Presentation:	PBS, 0.1% sodium azide.
Recommended Storage:	Long term: -70°C; Short term: +4°C
Usage Summary:	Immunohistochemistry: LS-A9239 was validated for use in immunohistochemistry on a panel of 21 formalin-fixed, paraffin-embedded (FFPE) human tissues after heat induced antigen retrieval in pH 6.0 citrate buffer. After incubation with the primary antibody, slides were incubated with biotinylated secondary antibody, followed by alkaline phosphatase-streptavidin and chromogen. The stained slides were evaluated by a pathologist to confirm staining specificity. The optimal working concentration for LS-A9239 was determined to be 10 ug/ml.
Uses:	IHC - Paraffin (10 µg/ml) (Optimal dilution to be determined by the researcher)
Size:	50 µg
Concentration:	0.8 mg/ml

Immunohistochemistry Image:



Anti-STEAP2 antibody LS-A9239 IHC of human uterus. Immunohistochemistry of formalin-fixed, paraffin-embedded tissue after heat-induced antigen retrieval.

Immunohistochemistry Image:



Anti-STEAP2 antibody LS-A9239 IHC of human tonsil. Immunohistochemistry of formalin-fixed, paraffin-embedded tissue after heat-induced antigen retrieval.

Requested From:

Japan

Laboratory Reagent For In Vitro Research Use Only

Not for resale without prior written consent from LifeSpan BioSciences, Inc.

Created on 9/23/2014

© 2014 LifeSpan BioSciences