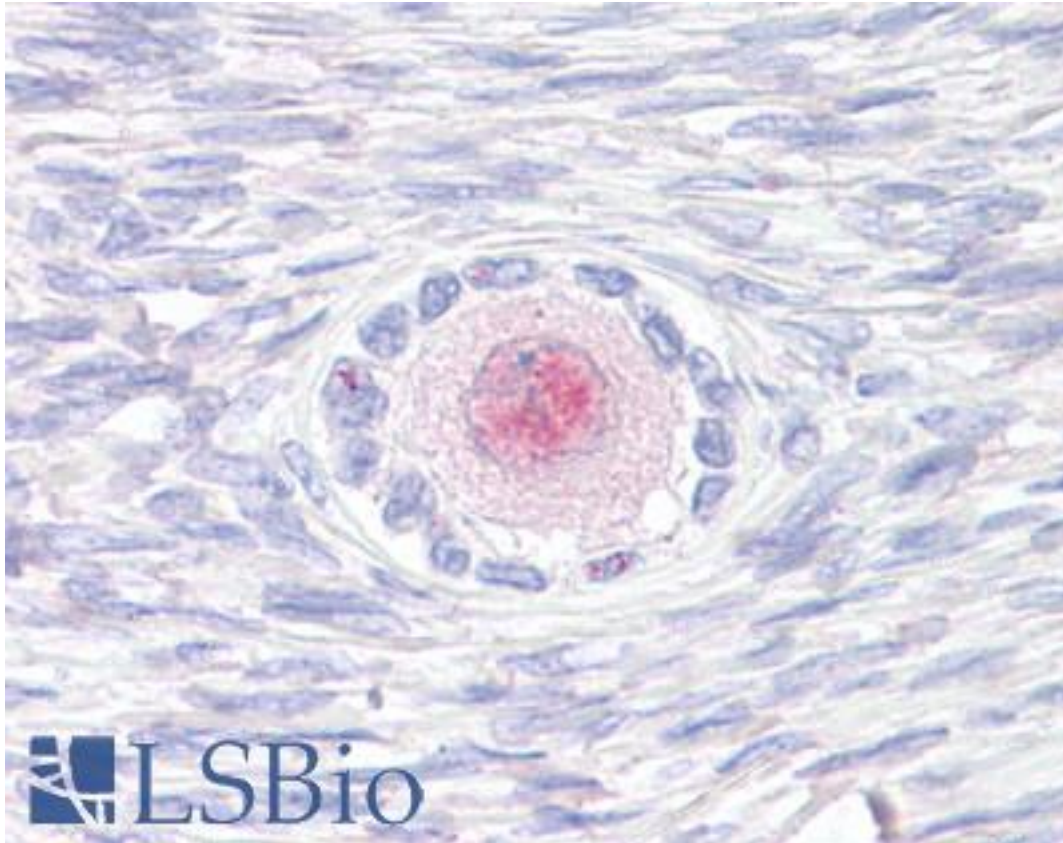


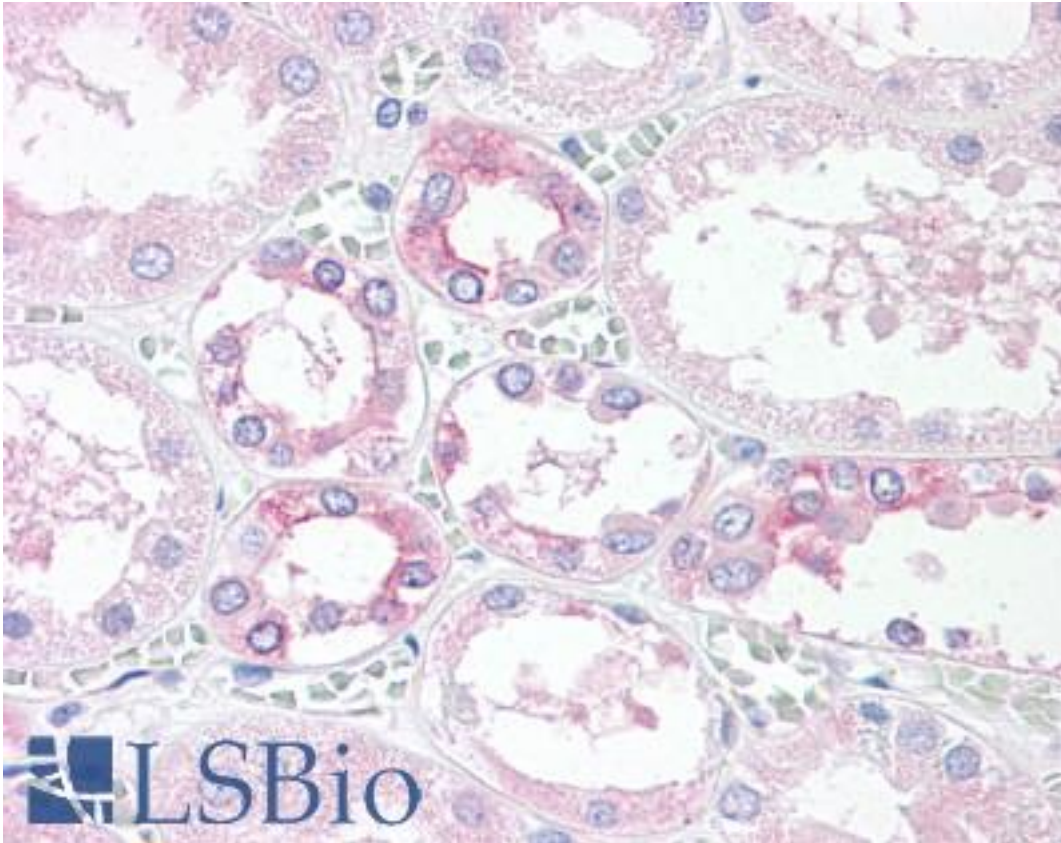
TM9SF4 Rabbit anti-Human Polyclonal (Internal) Antibody - LS-A9237 - LSBio	
CatalogID:	LS-A9237
Target:	transmembrane 9 superfamily protein member 4 (TM9SF4)
Synonyms:	TM9SF4 Antibody, DJ836N17.2 Antibody, KIAA0255 Antibody
Host	TM9SF4 antibody was produced in Rabbit
Clonality:	Polyclonal
Immunogen Species:	TM9SF4 antibody was raised against Human
Antigen Type:	Synthetic peptide
Immunogen:	TM9SF4 antibody was raised against synthetic 17 amino acid peptide from internal region of human TM9SF4. Percent identity with other species by BLAST analysis: Human, Chimpanzee, Gorilla, Orangutan, Gibbon, Monkey, Galago, Marmoset, Mouse, Rabbit, Guinea pig (100%); Rat, Elephant, Panda, Dog, Bat, Horse, Pig (94%); Bovine, Opossum, Zebra finch (88%); Turkey, Chicken (82%).
Specificity:	Human TM9SF4. BLAST analysis of the peptide immunogen showed no homology with other human proteins, except ALAS2 (47%).
Epitope:	Internal
Reactivity:	Human, Chimpanzee, Gorilla, Orangutan, Gibbon, Monkey, Mouse, Guinea pig, Rabbit
Predicted Reactivity:	Rat, Bat, Dog, Horse, Pig
Purification:	Immunoaffinity purified
Presentation:	PBS, 0.1% sodium azide.
Recommended Storage:	Long term: -70°C; Short term: +4°C
Uses:	IHC - Paraffin (15 - 20 µg/ml) (Optimal dilution to be determined by the researcher)
Size:	50 µg
Concentration:	1 mg/ml

Immunohistochemistry Image:



Anti-TM9SF4 antibody LS-A9237 IHC of human, ovary. Immunohistochemistry of formalin-fixed, paraffin-embedded tissue after heat-induced antigen retrieval.

Immunohistochemistry Image:



Anti-TM9SF4 antibody LS-A9237 IHC of human, kidney. Immunohistochemistry of formalin-fixed, paraffin-embedded tissue after heat-induced antigen retrieval.

Requested From:

Japan

Laboratory Reagent For In Vitro Research Use Only

Not for resale without prior written consent from LifeSpan BioSciences, Inc.

Created on 9/23/2014

© 2014 LifeSpan BioSciences